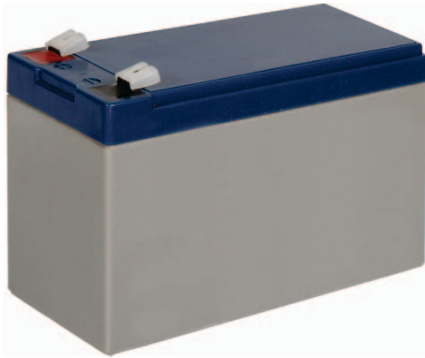


## RB05

### RB05 Replacement Rechargeable Battery (For Balmoral Series)



#### TECHNICAL SPECIFICATIONS

##### GENERAL

- This is a sealed lead acid battery suited for our 'Balmoral' collection of PO04 and PO05 lamp post lights, our WL03 wall light and our PL08 pedestal light. This is a 12 volt 9 Amp sealed lead acid Gel battery. Please select the capacity required depending upon your fixture product code. If in any doubt please email, call or check the battery in your fixture to see its specifications. We recommend that the battery in the PO, WL and PL series of Balmoral lights are replaced every 24-36 months, depending upon climate and usage etc. Shelf life, for storing sealed lead acid batteries, is about 12 months, approximately. Due to the nature and weight of this product ground shipping only. All batteries are offered as all sales final and are non-returnable & non-refundable.
- 
- Please note all batteries and light bulbs are non-returnable/non-refundable products.
- Batteries are sold in single units (order as many or as little as you need without quantity restrictions) and are therefore not packaged in retail cartons.
- Ground shipping only.
- Please see product description for details.
- Time length of night time illumination is estimated and subject to various factors including geographic location, seasons, weather conditions & location of product etc.
- Shorter illumination time due to one or more of the above factors does not define the fixture as being defective or define the fixture as being advertised incorrectly.
- We advertise and supply our solar lights to customers all over the world and therefore, naturally, we are unable to guarantee the nightly illumination time as it can vary and any time stated is quoted as 'up to' x amount hours.
- Minor errors & omissions must be accepted.
- Although unlikely, we reserve the right to supply this product with any minor alterations or minor changes to the specifications (shown above by text description or by photographs) due to different supplies or product batches received, incorporating such product changes made by the manufacturer, without further notice.
- Descriptions, specifications and photographs are updated regularly but may not be current when minor changes to a product have only recently been made.
- All solar lights must be used in a completely dark location at night time otherwise they may not illuminate. Nearby strong lighting sources or ambient lighting may affect the operation of a solar light. This does not define the fixture as being defective.

**One Year**   
Warranty

**Low Price**   
Guarantee

**No Hassle**   
Returns

**Worldwide**   
Shipping

**Lifetime**   
Tech Support

5611 Halifax Avenue • Fort Myers • FL • 33912 • USA • Phone: +1 239-461-5522 • Fax: +1 239-337-7887

MONDAY - FRIDAY 10.00AM - 4.00PM (US EASTERN TIME)

[www.solarilluminations.com](http://www.solarilluminations.com) • [sales@solarilluminations.com](mailto:sales@solarilluminations.com)