

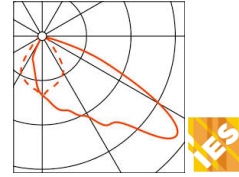
PL13 SOLAR 30W LED AREA LIGHT (WITHOUT POLE)



Pole Not Included



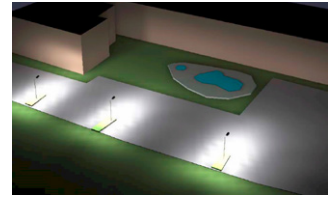
Asymmetric optical technology allows light to be directed forwards.



IES and lighting distribution data available for 20W, 30W, and 40W Models.

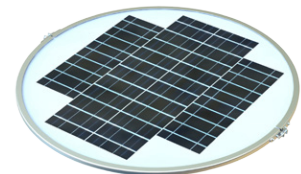


Utilizes super-efficient high-output SMD LED technology.



Complete 3D lighting renderings available for your application.

This powerful 30W all-in-one light fixture provides 3000 Lumens from its 48 white LEDs and 6 large LED panels. The compact design allows it to be installed in minutes onto an existing pole up to 2.5" diameter. It is perfect for replacing an existing gas or electric lamp or for new installations.



Worldwide*
Shipping ✓

Lowest Price*
Guarantee ✓

Lifetime*
Tech Support ✓

24 Month*
Product Warranty ✓

30 Day*
Returns ✓

5611 Halifax Avenue • Fort Myers • FL • 33912 • USA • Phone: 239-461-5522 • Fax: 239-337-7887

MONDAY - FRIDAY 8.00AM - 5.00PM (US EASTERN TIME)

www.solarilluminations.com • sales@solarilluminations.com

*SUBJECT TO OUR TERMS & CONDITIONS, AND RETURNS POLICY



PL13

SOLAR 30W LED AREA LIGHT (WITHOUT POLE)

Performance

- All in one design.
- Typically dusk to dawn illumination at night.
- Light will illuminate at full brightness for first 5 hours of night, and will then dim to 25% brightness for remainder of the night.
- Automatic illumination at dusk.
- Can illuminate an area up to 60' (18m) diameter.

LUMINAIRE

- 48 super bright white LED bulbs, 6 LED panels.
- Light output is 3000 Lumens in full brightness.
- Light output is 750 Lumens in dim mode.
- LED power consumption is 30 Watts.
- The light output is equivalent to approximately 400 Watts of incandescent lighting.
- Discrete pinhole on/off switch for manual over-ride.
- Aluminum construction.
- Gray colored finish.
- Wind resistant shape.
- Weather resistant I.P. 65 rating.
- The fixture is approximately 30" diameter and 6" high (76cm x 15cm).

SOLAR PANEL

- A 60 Watt solar panel is fixed discretely into the top of the lampshade.

BATTERY

- Includes a 22 Volt rechargeable Lithium (Li-Ion) battery which is located inside the lampshade.
- Life expectancy of the battery is about 5 years.
- The battery is removable and replaceable.

CHARGE CONTROL

- Internal battery over-charge and dis-charge protection
- Automatic light activation at sunset

Worldwide*
Shipping ✓

Lowest Price*
Guarantee ✓

Lifetime*
Tech Support ✓

24 Month*
Product Warranty ✓

30 Day*
Returns ✓

5611 Halifax Avenue • Fort Myers • FL • 33912 • USA • Phone: 239-461-5522 • Fax: 239-337-7887

MONDAY - FRIDAY 8.00AM - 5.00PM (US EASTERN TIME)

www.solarilluminations.com • sales@solarilluminations.com

*SUBJECT TO OUR TERMS & CONDITIONS, AND RETURNS POLICY