



SL28 Solar 6W/15W/40W LED Area Light (Without Pole)

TECHNICAL SPECIFICATIONS

Manufactured in an ISO9001:2000 'Quality Assured' facility.

PERFORMANCE

- Weather rating is I.P. 65
- Anti-tamper (theft resistant) stainless steel hardware included for pole clamp.

LIGHT FIXTURE

- A passive infra-red motion sensor is built into the fixture on all models.
- Motion sensor detection range (at ground level) is up to 20' forward and with a 90 degree detection spread, up to 13' left/right.
- The detection range will vary based on mounting height and environmental factors.
- All SMD/LED's have a color temperature of 6000-6500k.
- The 6W model is fitted with multiple SMD/LEDs at 6w power and provides 780 Lumens at full brightness and 260 Lumens in ambient mode. That is equal to approximately 120 watts of incandescent lighting.
- The 6W model can illuminate continuously for up to 24 hours in ambient mode or up to 12 hours in full brightness mode.
- The 15W model is fitted with multiple SMD/LEDs at 15w power and provides 1950 Lumens at full brightness and 650 Lumens in ambient mode. That is equal to approximately 250 watts of incandescent lighting.
- The 15W model can illuminate continuously for up to 24 hours in ambient mode or up to 12 hours in full brightness mode.
- The 40W model is fitted with multiple SMD/LEDs at 40w power and provides 5200 Lumens at full brightness and 1700 Lumens in ambient mode. That is equal to approximately 500 watts of incandescent lighting.
- The 40W model can illuminate continuously for up to 24 hours in ambient mode or up to 12 hours in full brightness mode.
- The 6W model is approx. 16" x 10" x 2" (42cm x 26cm x 5cm) LxWxD.
- The 15W model is approx. 27.5" x 14" x 2" (70cm x 36cm x 5cm) LxWxD.
- The 40W model is approx. 45" x 13" x 2" (115cm x 13cm x 5cm) LxWxD.
- The 6W model is suitable for lighting up an area approximately 30' x 30' (10m x 10m).
- The 15W model is suitable for lighting up an area approximately 50' x 50' (15m x 15m).
- The 40W model is suitable for lighting up an area approximately 80' x 80' (25m x 25m).

BATTERY

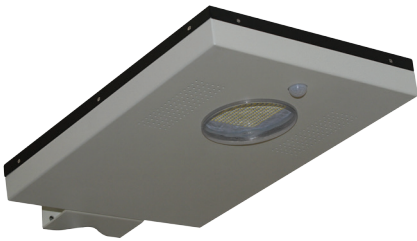
- Integral high capacity Lithium battery pack pre-installed.
- The system has built-in charge control regulation with over-charge and discharge protection.

SOLAR PANEL

- The 6W model is fitted with a 12 Watt solar panel.
- The 15W model is fitted with a 15 Watt solar panel.
- The 40W model is fitted with a 60 Watt solar panel.

INSTALLATION

- Short support arm and mounting bracket is included.
- The 6W model can be installed up to a height of approx. 13'.
- The 15W model can be installed up to a height of approx. 16'.
- The 40W model can be installed up to a height of approx. 26'.



Two Year*
Warranty ✓

Low Price
Guarantee ✓

No Hassle*
Returns ✓

Worldwide
Shipping ✓

Lifetime
Tech Support ✓

5611 Halifax Avenue • Fort Myers • FL • 33912 • USA • Phone: 239-461-5522 • Fax: 239-337-7887

MONDAY - FRIDAY 10.00AM - 4.00PM (US EASTERN TIME)

www.solarilluminations.com • sales@solarilluminations.com