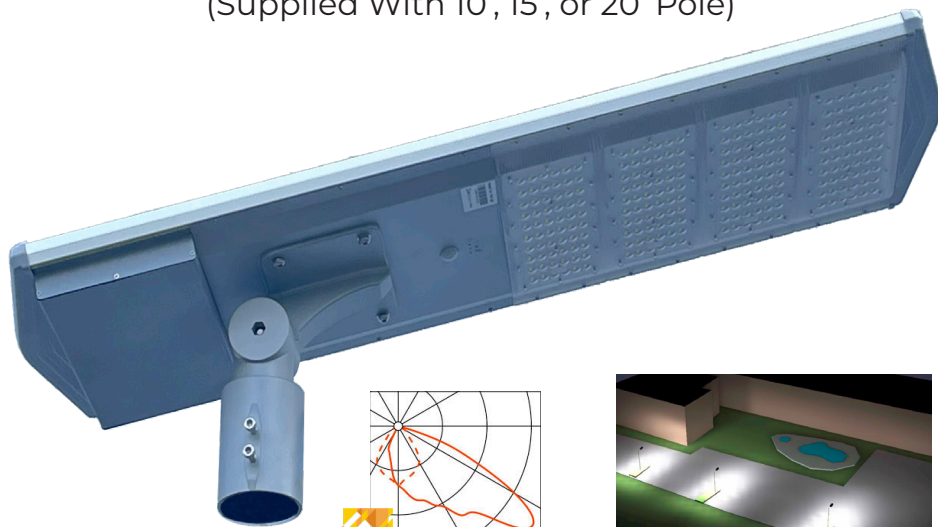




## SL41

SL41 Solar 60W/80W/100W  
(Supplied With 10', 15', or 20' Pole)



IES and lighting distribution data  
available for 40W, 60W, 80W &  
100W Models.



Complete 3D lighting  
renderings available for your  
application.

This compact, integrated, all-in-one, solar area light fixture is available in a choice of three different versions (60W, 80W, or 100W LED power). It's also available with a choice of pole heights (10', 15', or 20') plus customs heights by special order. This fixture offers three different pre-programmed modes which can be selected using the IR remote control (supplied). This fixture contains an integrated solar panel mounted discretely on the upper side and several powerful LED modules and a motion sensor on the underside. This fixture simply attaches to the top of the pole or to the side (using an optional support arm).



**Li** **Lithium Iron**  
Lithium POWER TECHNOLOGY

**Worldwide\***  
Shipping

**Lowest Price\***  
Guarantee

**Lifetime\***  
Tech Support

**24 Month\***  
Product Warranty

**No Hassle\***  
Returns

9120 Centerlinks Commerce Dr - Ste 3 • Fort Myers • FL • 33912 • USA • Phone: 239-461-5522 • Fax: 239-337-7887

**MONDAY - FRIDAY 8:00AM - 8:00PM (US EASTERN TIME)**

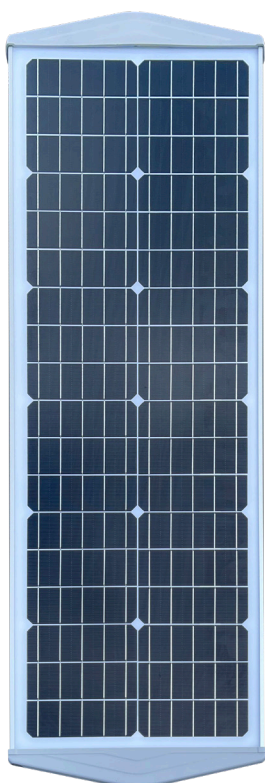
[www.solarilluminations.com](http://www.solarilluminations.com) • [sales@solarilluminations.com](mailto:sales@solarilluminations.com)

\*SUBJECT TO OUR TERMS & CONDITIONS, AND RETURNS POLICY



## SL41

SL41 Solar 60W/80W/100W  
(Supplied With 10', 15', or 20' Pole)



### LUMINAIRE

- Three different operation modes can be selected
- Timed mode – Offers automatic illumination at dusk at 100%, 70%, or 50% output.
- Motion sensor mode – Offers automatic illumination at dusk upon motion detection at either 100%, 70%, or 50% output.
- Mixed mode – Offers automatic illumination at dusk for up to 6 hours at 100%, 70%, or 50% output, then off, except upon motion detection until dawn at 100%, 70%, or 50% output.
- Select the required operating mode by using the IR remote control (included)
- 60 Watt version emits 6,500 lumens (at 100% output)
- 80 Watt version emits 8,500 lumens (at 100% output)
- 100 Watt version emits 10,500 lumens (at 100% output)
- 5,500~6,000k LED color temperature
- Aluminum construction
- IP65 weather rating
- 60 Watt dimensions approx. 38" x 14" x 4" (96cm x 35cm x 10cm)
- 80 Watt dimensions aprox. 44" x 14" x 4" (112cm x 35cm x 10cm)
- 100 Watt dimensions aprox. 50" x 14" x 4" (127cm x 35cm x 10cm)
- Gray / aluminum finish

### SOLAR PANEL

- 60 Watt version is fitted with a 18V 64 Watt solar panel
- 80 Watt version is fitted with a 18V 85 Watt solar panel
- 100 Watt version is fitted with a 18V 102 Watt solar panel
- Glass covered solar panel is integrated into the upper side of the fixture

### BATTERY

- Lithium battery pack pre-installed within the fixture
- 60 Watt is supplied with a 12.8 V 302 Watt-hour battery
- 80 Watt is supplied with a 12.8V 403 Watt-hour battery
- 100 Watt is supplied with a 12.8V 502 Watt-hour battery
- The long life battery is replaceable when required

**Worldwide\***  
Shipping

**Lowest Price\***  
Guarantee

**Lifetime\***  
Tech Support

**24 Month\***  
Product Warranty

**No Hassle\***  
Returns

9120 Centerlinks Commerce Dr - Ste 3 • Fort Myers • FL • 33912 • USA • Phone: 239-461-5522 • Fax: 239-337-7887

**MONDAY - FRIDAY 8:00AM - 8:00PM (US EASTERN TIME)**

[www.solarilluminations.com](http://www.solarilluminations.com) • [sales@solarilluminations.com](mailto:sales@solarilluminations.com)

\*SUBJECT TO OUR TERMS & CONDITIONS, AND RETURNS POLICY



## SL41

SL41 Solar 40W/60W/80W/100W  
(Supplied With 10', 15', or 20' Pole)

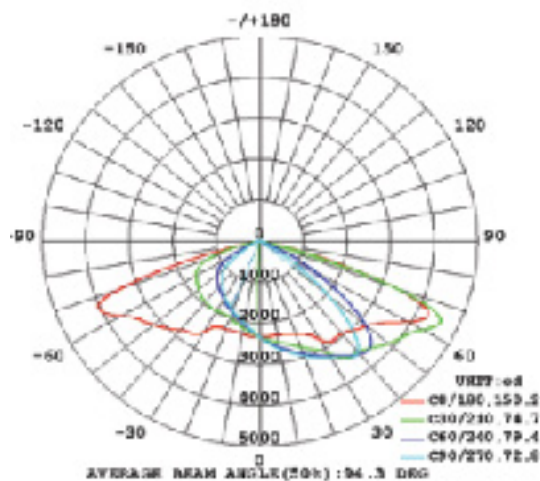


### POLE

- Tenon is included for top-of-pole mounting
- Ten allows for tilt/angle adjustment
- For side-of-pole mounting, an optional support arm is required (not included)
- Choice of a 10' (3M), 15' (4.5M), or 20' (6M) pole is included.
- Other heights by special order
- Pole colors available are gray or black
- 10' and 15' pole is fitted with an aprox. 10" x 10" base plate
- 20' pole is fitted with an aprox. 12" x 12.5" base plate
- Pole is supplied with a j-bolt anchor/template kit

### CHARGE CONTROL

- Internal battery over-charge and dis-charge protection
- Automatic light control for dusk and dawn



- Remote included to select
- desired light mode.

**Worldwide\***  
Shipping

**Lowest Price\***  
Guarantee

**Lifetime\***  
Tech Support

**24 Month\***  
Product Warranty

**No Hassle\***  
Returns

9120 Centerlinks Commerce Dr - Ste 3 • Fort Myers • FL • 33912 • USA • Phone: 239-461-5522 • Fax: 239-337-7887

**MONDAY - FRIDAY 8:00AM - 8:00PM (US EASTERN TIME)**

[www.solarilluminations.com](http://www.solarilluminations.com) • [sales@solarilluminations.com](mailto:sales@solarilluminations.com)

\*SUBJECT TO OUR TERMS & CONDITIONS, AND RETURNS POLICY