



WP01

Solar Wall Pack Light System
Includes 1-4 Fixtures - Complete System



- Sold as a complete lighting system with all components necessary for a typical installation.
- Illumination period can be designed subject to project requirements.
- Typical luminaire options are 5W, 10W or 20W.
- Supplied with between 1 and 4 light fixtures. Additional lights can be added upon request.
- Lights can be permanently dimmed to any Wattage between 1 and 30 Watts. Light can also be dimmed temporarily for a period during each night for power conservation (if necessary).
- Solar panel power is calculated based on luminaire power, installation location, and illumination time.
- Refer to our website, or contact our sales team for solar panel and battery sizing requirements.



*SUBJECT TO OUR TERMS & CONDITIONS, AND RETURNS POLICY

Lowest Price*
Guarantee



Worldwide*
Shipping



10 Year*
System Warranty



20 Year*
Panel Warranty



Lifetime*
Tech Support



9120 Centerlinks Commerce Drive • Unit 3 • Fort Myers • Florida • 33912 • USA • Telephone: 239-461-5522

MONDAY - FRIDAY 8:00AM - 8:00PM (US EASTERN TIME)

www.solarilluminations.com • sales@solarilluminations.com



WP01

Solar Wall Pack Light System
Includes 1-4 Fixtures - Complete System

Solar Makes Sense

Using a solar lighting system is often **cheaper than trenching** cables to remote sites or through parking lots, under roads and sidewalks.



No monthly bills for electric usage, meter fees, or taxes.

Federal and local incentives may be available to offset the cost of the system. View our website for current incentives.



Renewable energy. Use the sun's unlimited power as a clean source of renewable energy.

Green Image. Let people know your company or organization is doing its part in reducing its reliance on unclean energy.



Purchase with Confidence



Established in 2002 with offices and warehouse located in Fort Myers, Florida where we store, assemble, ship, and support our products.



We stand behind our systems with a 20 year limited warranty on the solar panels, and a 10 year limited warranty on the system.



Our superior customer service and support is proven with our A+ rating with the Better Business Bureau.



Technical support is available for life! We'll be here to assist you with support and troubleshooting if the need arises.

Lowest Price*
Guarantee

Worldwide*
Shipping

10 Year*
System Warranty

20 Year*
Panel Warranty

Lifetime*
Tech Support

9120 Centerlinks Commerce Drive • Unit 3 • Fort Myers • Florida • 33912 • USA • Telephone: 239-461-5522

MONDAY - FRIDAY 8:00AM - 8:00PM (US EASTERN TIME)

www.solarilluminations.com • sales@solarilluminations.com

*SUBJECT TO OUR TERMS & CONDITIONS, AND RETURNS POLICY



WP01

Solar Wall Pack Light System Includes 1-4 Fixtures - Complete System

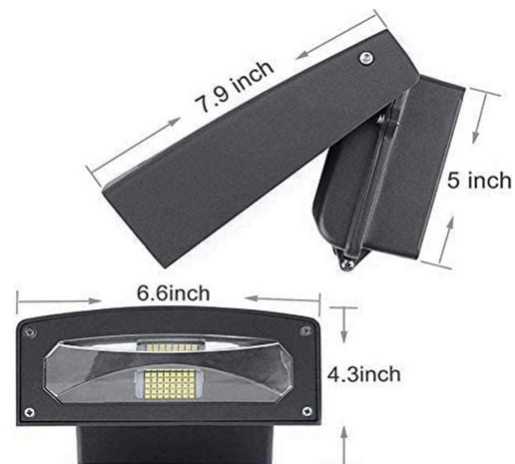
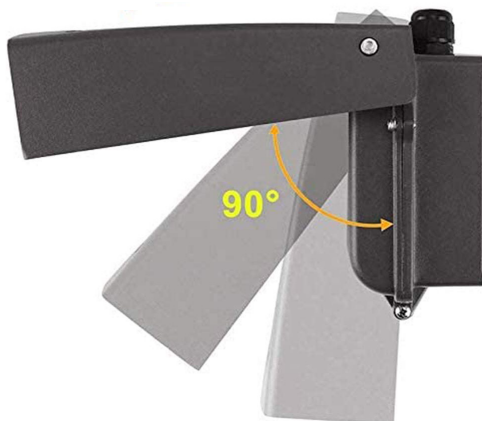


This wall pack light system is supplied with up to four light fixtures offered in 5W or 10W. Additional light fixtures can be added to the system if required. Increasing the power (Wattage) of the light fixture increases the light spread, as well as the light intensity.

Illumination time is up to 8 hours, or dusk to dawn. Additional illumination times are available upon request. Motion sensors, wired or remote controlled switches, and/or timers can be added to the system upon request.



- Lumens:
20 Watt light: 1900 Lumens
10 Watt light: 1350 Lumens
5 Watt light: 675 Lumens
- Higher Wattage light fixtures available.
- Aluminum and glass construction
- 5000k color temperature
- Light fixture quantity: Up to four. Additional can be added if needed
- Light fixture cable: 20' (longer length cables available)
- Light fixture angle adjustment: Up to 90 degrees
- Color of light fixture: Bronze



*SUBJECT TO OUR TERMS & CONDITIONS, AND RETURNS POLICY

Lowest Price*
Guarantee



Worldwide*
Shipping



10 Year*
System Warranty



20 Year*
Panel Warranty



Lifetime*
Tech Support



9120 Centerlinks Commerce Drive • Unit 3 • Fort Myers • Florida • 33912 • USA • Telephone: 239-461-5522

MONDAY - FRIDAY 8:00AM - 8:00PM (US EASTERN TIME)

www.solarilluminations.com • sales@solarilluminations.com

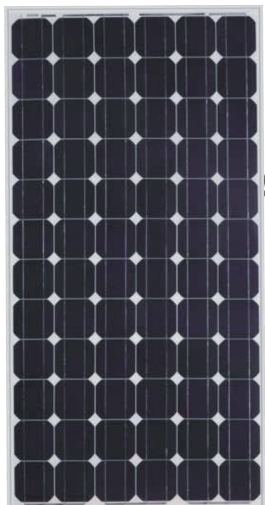


WP01

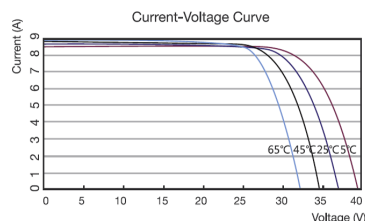
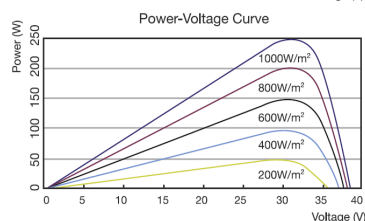
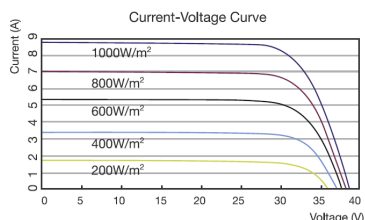
Solar Wall Pack Light System Includes 1-4 Fixtures - Complete System

Solar Panel

Systems are supplied with high quality monocrystalline or polycrystalline solar panels with the highest performance and efficiency. They are designed to endure the harshest environments, and are guaranteed to provide power for well over 20 years. Typically manufactured in the USA, Canada, or Germany. The solar panel power is subject to LED consumption, installation location, and illumination period. Please consult with our engineers for specific details and solar power recommendations.



MC4 Connector



Photovoltaic Module

- Highly efficient monocrystalline or polycrystalline solar panel with aluminum frame, anti-aging, and encapsulated membrane.
- Anti-reflective and anti-soiling surface that reduces power losses from dirt and dust.
- Certified to withstand high wind loads (340PSI) and snow loads (780PSI); and resistance to high salt and ammonia.
- Manufactured to international standards, verified and certified by independent testing laboratories. (UL, ETL, IEC, MCS, & TUV)
- Assembled to strict quality control standards; international standards ISO 9001 and ISO 14001.
- Range of solar panel power available from 45W to +500W.
- The solar panel power is subject to LED consumption, installation location, and illumination period. Please consult our engineers for specific solar power requirements.
- Solar panels can be supplied in a single or dual format.
- Typical solar panel life is over 30 years, subject to environmental factors.
- 65W panel dimensions: 34.25" x 20.13" x 1.5"
- 85W panel dimensions: 32.35" x 26.22" x 1.5"
- 120W panel dimensions: 47.87" x 26.43" x 1.5"
- 170W panel dimensions: 44" x 38.7" x 1.5" (or may be supplied as two 90W panels).
- 270W panel dimensions: 64.38" x 39" x 1.5"
- 340W panel consists of two 170W panels.



Lowest Price*
Guarantee

Worldwide*
Shipping

10 Year*
System Warranty

20 Year*
Panel Warranty

Lifetime*
Tech Support

9120 Centerlinks Commerce Drive • Unit 3 • Fort Myers • Florida • 33912 • USA • Telephone: 239-461-5522

MONDAY - FRIDAY 8:00AM - 8:00PM (US EASTERN TIME)

www.solarilluminations.com • sales@solarilluminations.com

*SUBJECT TO OUR TERMS & CONDITIONS, AND RETURNS POLICY

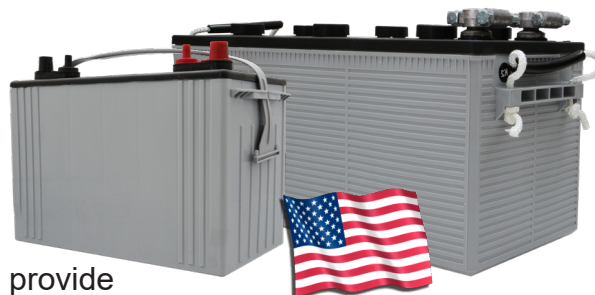


WP01

Solar Wall Pack Light System Includes 1-4 Fixtures - Complete System



"EastPenn batteries are engineered and tested to provide reliable, long-lasting power for Photovoltaic (PV) and renewable energy applications where frequent deep cycles are required and minimum maintenance is desirable."

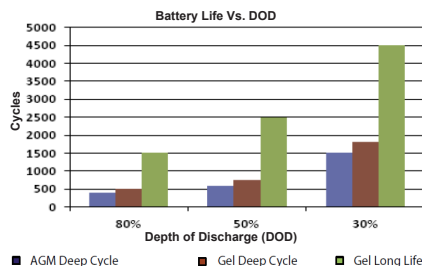
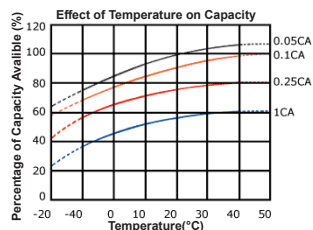


Made in the USA



Battery

- Manufactured by: East Penn Manufacturing Co. Inc.
- 100% made in the USA.
- System supplied standard with two 12 Volt batteries. Batteries are wired in series to make a 24 Volt system.
- Available battery capacities range from 12Ah to 245Ah (per battery).
- Choice of two battery types: Absorbed Glass Mat (AGM) or Gel Cell.
- Please consult our engineers for specific battery capacity requirements.
- Classified as Non-spillable (defined by DOT, ICAO and IATA), NonHAZMAT, and valve regulate.
- Conforms to ISO9001, ISO/TS 16949, and ISO14001 standards.
- Typical battery life is approximately 5 to 7 years, subject to environmental factors.



VRLA Technology

VRLA batteries are maintenance free for life. VRLA stands for Valve Regulated Lead Acid, which means the batteries are sealed. Gas will only escape through the safety valves in the case of overcharging or cell failure.

AGM and Gel batteries have exceptional discharge recovery, even after deep or prolonged discharge. However, it should be noted that repetitive deep discharge and prolonged deep discharge have a negative influence on the service life of all lead acid batteries.

Gel batteries in general have a longer service life and better cycle capacity than AGM batteries.

Please Note: The rated capacity of our AGM or gel deep cycle batteries refer to 20 hour discharge rate (i.e. 0.05CA). Most products actually operate near, or at a 100 hour discharge rate (i.e. 0.01CA) and thus actual available battery capacity is slightly higher than the advertised rate.

The total available battery power is measured in watt-hour (Wh) or V*Ah. When comparing our total battery capacity with competitor's, please note that the battery capacity from a 12V system is not interchangeable with the battery capacity of a 24V system. However, the total battery power (i.e. watt-hours) is always comparable provided the correct system voltage is considered during calculation.



Lowest Price*
Guarantee



Worldwide*
Shipping



10 Year*
System Warranty



20 Year*
Panel Warranty



Lifetime*
Tech Support



9120 Centerlinks Commerce Drive • Unit 3 • Fort Myers • Florida • 33912 • USA • Telephone: 239-461-5522

MONDAY - FRIDAY 8:00AM - 8:00PM (US EASTERN TIME)

www.solarilluminations.com • sales@solarilluminations.com

*SUBJECT TO OUR TERMS & CONDITIONS, AND RETURNS POLICY

WP01

Solar Wall Pack Light System
Includes 1-4 Fixtures - Complete System



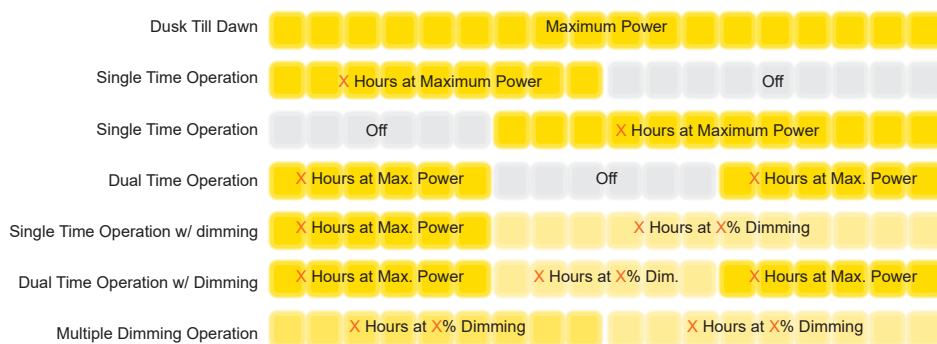
Maximum Power Point Tracking

Supplied standard with the most advanced and sophisticated MPPT charge controller technology. Allowing for full system programmability and light control; including active dimming and intelligent battery management. MPPT technology increases power generation by up to 30% during inclement periods, and intelligent battery management provides extended battery life and extra protection against excessive discharge.

MPPT Control Module

- The MPPT controller will improve energy harvest by up to 30% compared to PWM charge controllers. Especially in the case of cold cloudy winter weather, when light intensity is changing continuously.
- Offers full programmability of load output: dusk to dawn, multi-timed mode, and integrated diming (all standard features).
- Intelligent battery management software is used to protect the battery from being excessively discharged. The controller will monitor the state of charge on the battery, and if needed, day by day slightly increase the load disconnect level (i. e. disconnect the load earlier) until the harvested solar energy is sufficient to recharge the battery to nearly the full 100% at least once a week. Allowing for the longest life possible from the batteries.
- Controller size and ratings are subject to solar panel and battery specifications.
- *Supports real time data monitoring, 30 day performance history, and user programmability from Apple or Android smartphones, tablets, etc. Use of this feature requires the optional MPPT Bluetooth Dongle.

The comprehensive light control system allows for extensive configuration, including dynamic activation and optional dimming. Lighting activation is controlled by the charge controller and solar panel. Dimming of the luminaire is adjusted by percentage, i.e 100% is equal to full power, 50% is equal to half power, etc.



*The lighting control options are variable, and not all options are listed. If you require a specific control operation not listed, please contact one of our engineers to verify feasibility.

****A midnight feature is available as a timed operation parameter. Midnight is determined by calculating the middle of the night and does not necessarily mean 12AM (although it will be close).**

It also can be adjusted earlier or later by X number of hours.



*Real time data monitoring,
30 day performance history,
and user programmability
from Apple or Android
smartphones.



SUBJECT TO OUR TERMS & CONDITIONS AND RETURNS POLICY

Lowest Price*
Guarantee

Worldwide Shipping 

10 Year*
System Warranty

20 Year*
Panel Warranty

Lifetime*
Tech Support 

9120 Centerlinks Commerce Drive • Unit 3 • Fort Myers • Florida • 33912 • USA • Telephone: 239-461-5522

MONDAY - FRIDAY 8:00AM - 8:00PM (US EASTERN TIME)

www.solarilluminations.com • sales@solarilluminations.com



WP01

Solar Wall Pack Light System Includes 1-4 Fixtures - Complete System

We stock several types of battery enclosures, ranging from various sizes and construction materials. The type of battery enclosure provided will depend on the size of the batteries required, and/or how the battery enclosure needs to be mounted. All battery enclosures are weather rated, designed for interior or exterior installation.

BE01



- BE01 Battery Enclosure
- Plastic construction.
- Supplied with outlets or cable glands dependant on system requirements.
- Hinged lockable lid (padlock not included).
- Dimensions: 12 3/16" x 9" x 6 1/2" (310mm x 225mm x 165mm)

BE02



- BE02 Battery Enclosure
- Galvanized steel construction.
- Fitted with 4 outlets, and one solar panel input.
- Hinged lockable lid (padlock not included).
- Dimensions: 13" x 9 7/8" x 8 7/8" (330mm x 250mm x 225mm)
- Dimensions including lid over-hang: 9 7/8" x 15 6/8" x 8 7/8" (250mm x 400mm x 225mm)

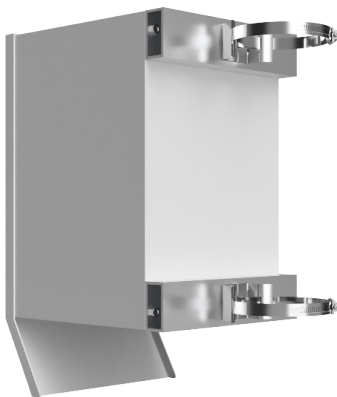
BE03



- BE03 Battery Enclosure
- Galvanized steel construction.
- Fitted with 8 outlets, and one solar panel input.
- Hinged lockable lid (padlock not included).
- Dimensions: 18 1/8" x 14 3/8" x 11 3/16" (460mm x 365mm x 284mm)
- Dimensions including lid over-hang and side flanges: 21 1/4" x 15 3/8" x 11 3/16" (510mm x 390mm x 284mm)

Optional Battery Enclosure Mounting Hardware

If you need to mount your battery enclosure to a round post or pole, you can purchase our optional battery enclosure pole mount hardware kits.



SP13

The SP13 battery enclosure pole mount kit can be used to mount our BE01, BE02, or BE03 to a round pole or post. Pole diameter options vary between 2" to 8" diameter.



*SUBJECT TO OUR TERMS & CONDITIONS, AND RETURNS POLICY

Lowest Price*
Guarantee



Worldwide*
Shipping



10 Year*
System Warranty



20 Year*
Panel Warranty



Lifetime*
Tech Support



9120 Centerlinks Commerce Drive • Unit 3 • Fort Myers • Florida • 33912 • USA • Telephone: 239-461-5522

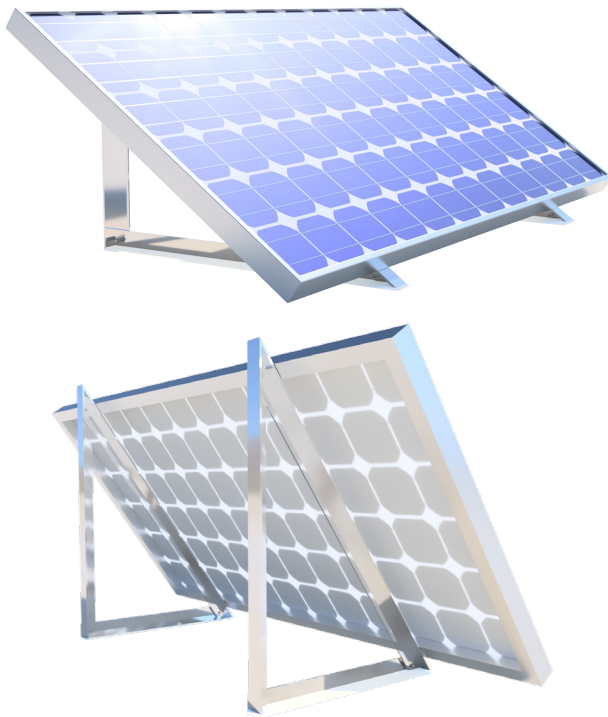
MONDAY - FRIDAY 8:00AM - 8:00PM (US EASTERN TIME)

www.solarilluminations.com • sales@solarilluminations.com



WP01

Solar Wall Pack Light System Includes 1-4 Fixtures - Complete System



Each solar panel is supplied with a pair of metal mounting triangles. These triangles allow the installer to mount the solar panel at an appropriate angle to a solid vertical or horizontal surface (such as a wall or concrete pad).

The panels can be installed in numerous ways, but note that the solar must be mounted at an appropriate angle (15° plus site latitude), face due south for the northern hemisphere and north for the southern hemisphere, and be in clear view of the sun (with no shading).

If any of these requirements are not possible, please notify us prior to ordering so we can calculate solar panel sizing options.

Optional Solar Panel Mounting Hardware

Below are solar panel pole mount options that can be purchased as an optional extra.

SP11

Can accommodate panels up to 39" wide



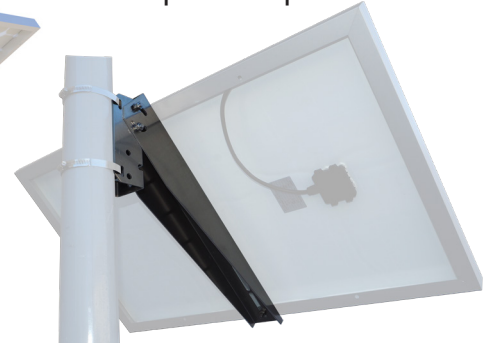
SP12

Can accommodate one or two panels, up to 39" wide each.



SP04 / SP08

SP04 can accommodate panels up to 20" wide. SP08 can accommodate panels up to 26" wide.



*SUBJECT TO OUR TERMS & CONDITIONS, AND RETURNS POLICY

Lowest Price*
Guarantee

Worldwide*
Shipping

10 Year*
System Warranty

20 Year*
Panel Warranty

Lifetime*
Tech Support

9120 Centerlinks Commerce Drive • Unit 3 • Fort Myers • Florida • 33912 • USA • Telephone: 239-461-5522

MONDAY - FRIDAY 8:00AM - 8:00PM (US EASTERN TIME)

www.solarilluminations.com • sales@solarilluminations.com