



SL09

SOLAR LED AREA LIGHT WITH POLE

5W To 30W LED Power - Complete System



This professional, commercial grade, solar powered area light is supplied with a choice of pole, and the necessary pole mounting hardware for all the components to attach. This system includes a powerful LED floodlight that can be adjusted to provide the perfect illumination for your application. It can be designed and programmed to operate dusk to dawn year round or on a single or dual timed mode.

- Sold as a complete, stand-alone, self-contained, solar powered area lighting system.
- The nightly illumination time can be dusk to dawn, or a single timed mode (on at dusk for X number of hours, then off), or a dual timed mode (on at dusk for X number of hours, then off, then back on again for X number of hours before dawn).
- Choice of LED power from 5W (665lm) up to 30W (3,990lm) and color temperature options (3,000k~6,000k).
- The solar panel size (wattage) and the battery size (capacity) is carefully calculated and determined by the total LED power, the geographic location of the site, and the required nightly illumination time.
- Pole height options are 10' (3M), 15' (4.5M), or 20' (6M). Custom pole heights are available by special order.



Lowest Price*
Guarantee



Worldwide*
Shipping



10 Year*
System Warranty



20 Year*
Panel Warranty



Lifetime*
Tech Support



9120 Centerlinks Commerce Drive • Unit 3 • Fort Myers • FL • 33912 • USA • Telephone: 239-461-5522

MONDAY - FRIDAY 8:00AM - 8:00PM (US EASTERN TIME)

www.solarilluminations.com • sales@solarilluminations.com

*SUBJECT TO OUR TERMS & CONDITIONS, AND RETURNS POLICY



SL09 SOLAR LED AREA LIGHT WITH POLE 5W To 30W LED Power - Complete System

Solar Makes Sense

Using a solar lighting system is often **cheaper than trenching** cables to remote sites or through parking lots, under roads and sidewalks.



No monthly bills for electric usage, meter fees, or taxes.

Federal and local incentives may be available to offset the cost of the system. View our website for current incentives.



Renewable energy. Use the sun's unlimited power as a clean source of renewable energy.

Green Image. Let people know your company or organization is doing its part in reducing its reliance on unclean energy.



Purchase with Confidence



Established in 2002 with offices and warehouse located in Fort Myers, Florida where we store, assemble, ship, and support our products.



We stand behind our systems with a 20 year limited warranty on the solar panels, and a 10 year limited warranty on the system.



Our superior customer service and support is proven with our A+ rating with the Better Business Bureau.



Technical support is available for life! We'll be here to assist you with support and troubleshooting if the need arises.

Lowest Price*
Guarantee

Worldwide*
Shipping

10 Year*
System Warranty

20 Year*
Panel Warranty

Lifetime*
Tech Support

9120 Centerlinks Commerce Drive • Unit 3 • Fort Myers • FL • 33912 • USA • Telephone: 239-461-5522

MONDAY - FRIDAY 8:00AM - 8:00PM (US EASTERN TIME)

www.solarilluminations.com • sales@solarilluminations.com

*SUBJECT TO OUR TERMS & CONDITIONS, AND RETURNS POLICY



SL09

SOLAR LED AREA LIGHT WITH POLE

5W To 30W LED Power - Complete System

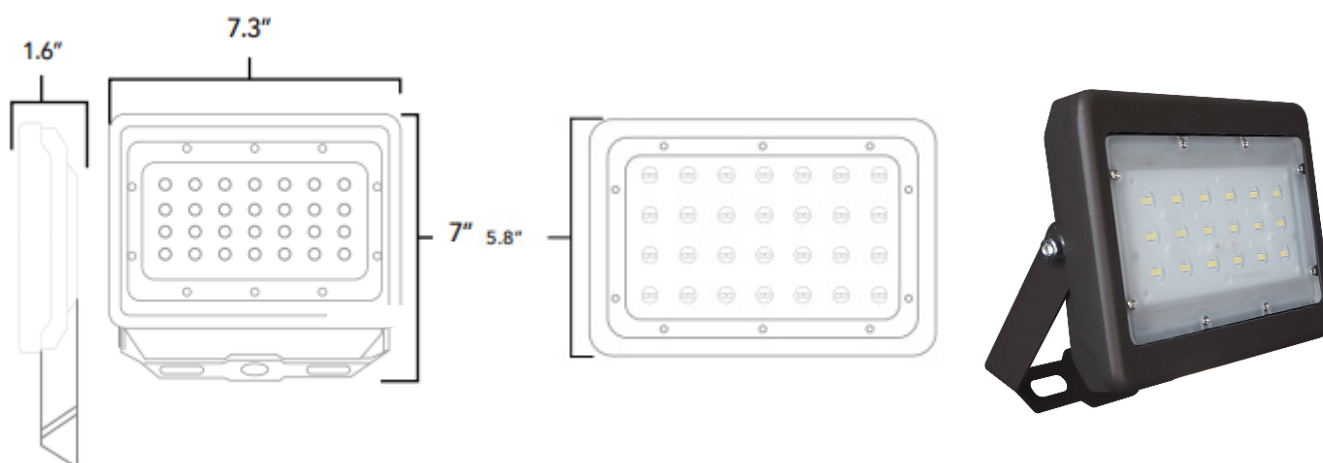


This area light system is supplied with a choice of 5W, 10W, 20W, or 30W LED power. Increasing the power (Wattage) of the light fixture increases the light spread, as well as the light intensity.

Illumination time can be dusk to dawn or a single or dual timed mode. Custom options such as motion sensors, wired or remote controlled on/off switches, and/or timers can be added to the system by special order and upon request.



Color Temperature	5700k	Waterproof Rating	IP65
CRI	>70	LED Brand	LUMILEDS
Input Power	5W, 10W, 20W or 30W	LED Type	LUXEON 3030 2D
Lumens	5W 665 lm	Cable Length	20'
	10W 1330 lm	PF	>0.9
	20W 2660 lm	Housing	Aluminum, PC, Steel
	30W 3990 lm	Housing Color	Brown / Bronze
Viewing Angle	7H7V	Operating Temperature	-4° to 113°F
Input Voltage	24V DC	Safety Certification	UL, cUL, DLC
Driver Model	Meanwell		



*SUBJECT TO OUR TERMS & CONDITIONS, AND RETURNS POLICY

Lowest Price*
Guarantee



Worldwide*
Shipping



10 Year*
System Warranty



20 Year*
Panel Warranty



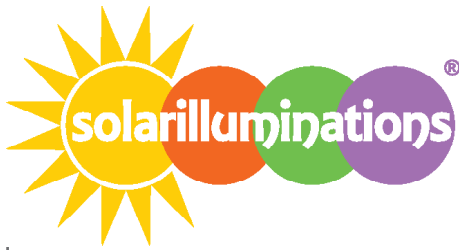
Lifetime*
Tech Support



9120 Centerlinks Commerce Drive • Unit 3 • Fort Myers • FL • 33912 • USA • Telephone: 239-461-5522

MONDAY - FRIDAY 8:00AM - 8:00PM (US EASTERN TIME)

www.solarilluminations.com • sales@solarilluminations.com



SL09

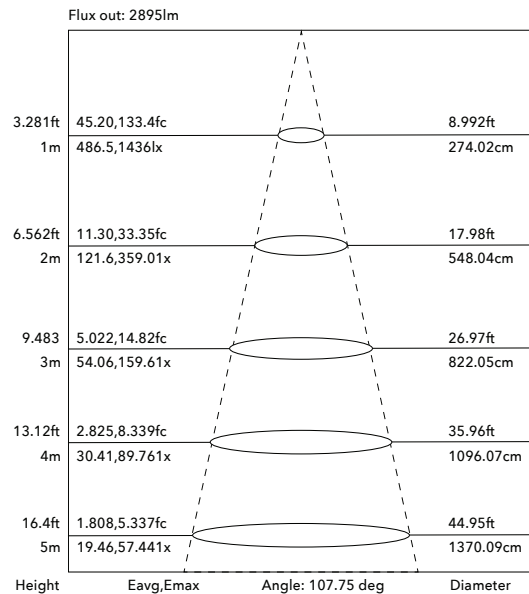
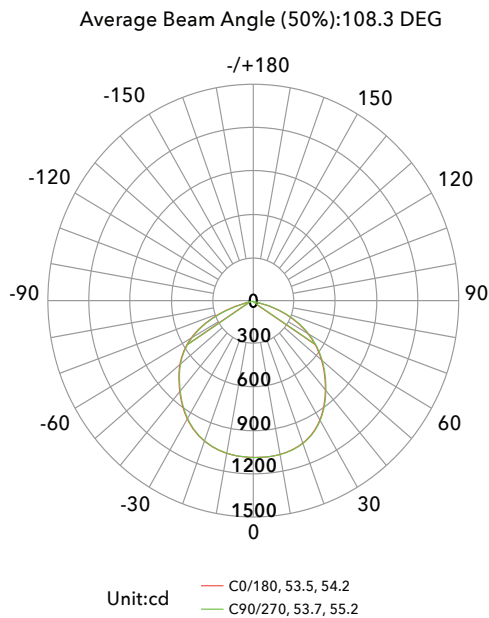
SOLAR LED AREA LIGHT WITH POLE

5W To 30W LED Power - Complete System

LIGHT DISTRIBUTION TESTING PARAMETERS

Data of Lamp		Photometric Data				Eff: 129.56 lm/W
Model		Imax (cd)	1437	S/MH (C0/180)		1.28
Nominal Power (W)	30	LOR (%)	100.0	S/MH (C90/270)		1.30
Rated Voltage (V)	120	Total Flux (lm)	3736.9	η UP, DN (C0-180)		0.1,50.6
Nominal Flux (1m)	3736.91	CIE Class	Direct	η UP, DN (C180-360)		0.1, 49.3
Lamps Inside	1	η up (%)	0.1	CIBSE SHR NOM		1.25
Test Voltage	120	η down (%)	99.9	CIBSE SHR MAX		1.35

LUMINOUS INTENSITY DISTRIBUTION DIAGRAM



*SUBJECT TO OUR TERMS & CONDITIONS, AND RETURNS POLICY

Lowest Price* Guarantee Worldwide* Shipping 10 Year* System Warranty 20 Year* Panel Warranty Lifetime* Tech Support

9120 Centerlinks Commerce Drive • Unit 3 • Fort Myers • FL • 33912 • USA • Telephone: 239-461-5522

MONDAY - FRIDAY 8:00AM - 8:00PM (US EASTERN TIME)

www.solarilluminations.com • sales@solarilluminations.com



SL09

SOLAR LED AREA LIGHT WITH POLE

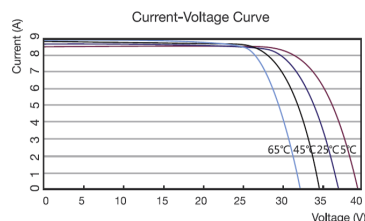
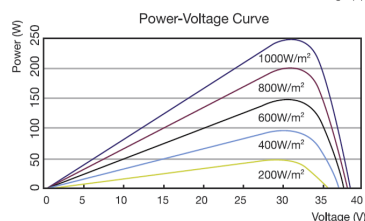
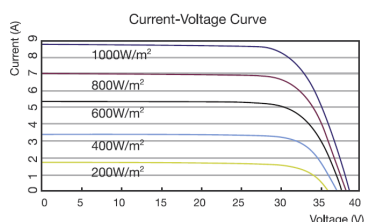
5W To 30W LED Power - Complete System



Solar Panel

Systems are supplied with high quality monocrystalline or polycrystalline solar panels with the highest performance and efficiency. They are designed to endure the harshest environments, and are guaranteed to provide power for well over 20 years. Typically manufactured in the USA, Canada, or Germany. The solar panel power is subject to LED consumption, installation location, and illumination period. Please consult with our engineers for specific solar power recommendations.

MC4 Connector



Photovoltaic Module

- Highly efficient monocrystalline or polycrystalline solar panel with aluminum frame, anti-aging, and encapsulated membrane.
- Anti-reflective and anti-soiling surface that reduces power losses from dirt and dust.
- Certified to withstand high wind loads (340PSI) and snow loads (780PSI); and resistance to high salt and ammonia.
- Manufactured to international standards, verified and certified by independent testing laboratories. (UL, ETL, IEC, MCS, & TUV)
- Assembled to strict quality control standards; international standards ISO 9001 and ISO 14001.
- Range of solar panel power available from 45W to +500W.
- The solar panel power is subject to LED consumption, installation location, and illumination period. Please consult our engineers for specific solar power requirements.
- Solar panels can be supplied in a single or dual format (2 x 70W = 140W, 2 x 100W = 200W etc.)
- Typical solar panel life is over 30 years, subject to environmental factors.
- 60W panel dimensions: 34.25" x 20.13" x 1.5"
- 90W panel dimensions: 32.35" x 26.22" x 1.5"
- 100W panel dimensions: 40.25" x 26.25" x 1.5"
- 120W panel dimensions: 47.87" x 26.43" x 1.5"
- 170W panel dimensions: 44" x 38.7" x 1.5" (or may be supplied as two 90W panels).
- 270W panel dimensions: 64.38" x 39" x 1.5"
- 340W panel consists of two 170W panels.



*SUBJECT TO OUR TERMS & CONDITIONS, AND RETURNS POLICY

Lowest Price*
Guarantee



Worldwide*
Shipping



10 Year*
System Warranty



20 Year*
Panel Warranty



Lifetime*
Tech Support



9120 Centerlinks Commerce Drive • Unit 3 • Fort Myers • FL • 33912 • USA • Telephone: 239-461-5522

MONDAY - FRIDAY 8:00AM - 8:00PM (US EASTERN TIME)

www.solarilluminations.com • sales@solarilluminations.com



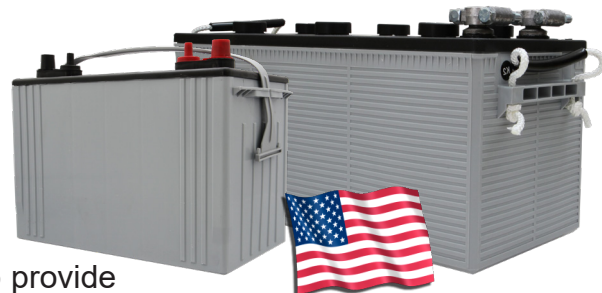
SL09

SOLAR LED AREA LIGHT WITH POLE

5W To 30W LED Power - Complete System



"EastPenn batteries are engineered and tested to provide reliable, long-lasting power for Photovoltaic (PV) and renewable energy applications where frequent deep cycles are required and minimum maintenance is desirable."

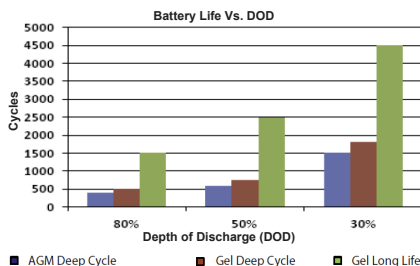
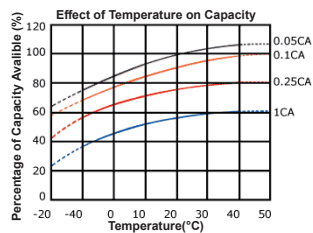


Made in the USA



Battery

- Manufactured by: East Penn Manufacturing Co. Inc.
- 100% made in the USA.
- System supplied standard with two 12 Volt batteries. Batteries are wired in series to make a 24 Volt system.
- Available battery capacities range from 18Ah to 245Ah (per battery).
- Choice of two battery types: Absorbed Glass Mat (AGM) or Gel Cell.
- Please consult our engineers for specific battery capacity requirements.
- Classified as Non-spillable (defined by DOT, ICAO and IATA), NonHAZMAT, and valve regulate.
- Conforms to ISO9001, ISO/TS 16949, and ISO14001 standards.
- Typical battery life is approximately 5 to 7 years, subject to environmental factors.



VRLA Technology

VRLA batteries are maintenance free for life. VRLA stands for Valve Regulated Lead Acid, which means the batteries are sealed. Gas will only escape through the safety valves in the case of overcharging or cell failure.

AGM and Gel batteries have exceptional discharge recovery, even after deep or prolonged discharge. However, it should be noted that repetitive deep discharge and prolonged deep discharge have a negative influence on the service life of all lead acid batteries.

Gel batteries in general have a longer service life and better cycle capacity than AGM batteries.

Please Note: The rated capacity of our AGM or gel deep cycle batteries refer to 20 hour discharge rate (i.e. 0.05CA). Most products actually operate near, or at a 100 hour discharge rate (i.e. 0.01CA) and thus actual available battery capacity is slightly higher than the advertised rate.

The total available battery power is measured in watt-hour (Wh) or V*Ah. When comparing our total battery capacity with competitor's, please note that the battery capacity from a 12V system is not interchangeable with the battery capacity of a 24V system. However, the total battery power (i.e. watt-hours) is always comparable provided the correct system voltage is considered during calculation.



Lowest Price*
Guarantee



Worldwide*
Shipping



10 Year*
System Warranty



20 Year*
Panel Warranty



Lifetime*
Tech Support



9120 Centerlinks Commerce Drive • Unit 3 • Fort Myers • FL • 33912 • USA • Telephone: 239-461-5522

MONDAY - FRIDAY 8:00AM - 8:00PM (US EASTERN TIME)

www.solarilluminations.com • sales@solarilluminations.com

*SUBJECT TO OUR TERMS & CONDITIONS, AND RETURNS POLICY



Supplied standard with the most advanced and sophisticated MPPT charge controller technology. Allowing for full system programmability and light control; including active dimming and intelligent battery management. MPPT technology increases power generation by up to 30% during inclement periods, and intelligent battery management provides extended battery life and extra protection against excessive discharge.

- The MPPT controller will improve energy harvest by up to 30% compared to PWM charge controllers. Especially in the case of cold cloudy winter weather, when light intensity is changing continuously.
- Offers full programmability of load output: dusk to dawn, multi-timed mode, and integrated dimming (all standard features).
- Intelligent battery management software is used to protect the battery from being excessively discharged. The controller will monitor the state of charge on the battery, and if needed, day by day slightly increase the load disconnect level (i. e. disconnect the load earlier) until the harvested solar energy is sufficient to recharge the battery to nearly the full 100% at least once a week. Allowing for the longest life possible from the batteries.
- Controller size and ratings are subject to solar panel and battery specifications.
- *Supports real time data monitoring, 30 day performance history, and user programmability from Apple or Android smartphones, tablets, etc. Use of this feature requires the optional MPPT Bluetooth Dongle.

CE

SUBJECT TO OUR TERMS & CONDITIONS AND RETURNS POLICY

[illegible]

It also can be adjusted earlier or later by X number of hours.

Lifetime*
Tech Support 

www.solarilluminations.com • sales@solarilluminations.com



SL09

SOLAR LED AREA LIGHT WITH POLE

5W To 30W LED Power - Complete System

Performance

Operating voltage is 24 volts. DC.

Power consumption is 10, 15, 20, 25 or 30 Watts (subject to model selected).

Operating temperature -40 deg. C ~ +80 deg. C (-40 deg. F ~ 175 deg. F).

Intelligent battery management software to prevent over-charging and over-discharging.

Includes a minimum of three to five days of autonomy (battery back-up).

Several successive cloudy or overcast days typically will not affect illumination time.

Supplied solar panel power is based on installation location and system requirements.

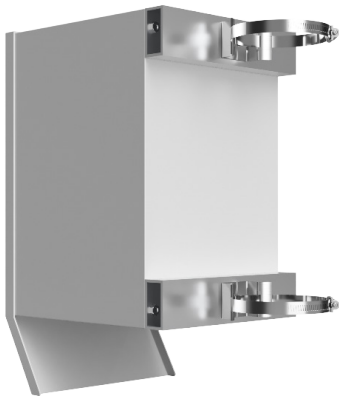
Illumination period can be designed to meet specific requirements.

Solar panel and light fixture cables make final connection to charge controller installed within battery enclosure.



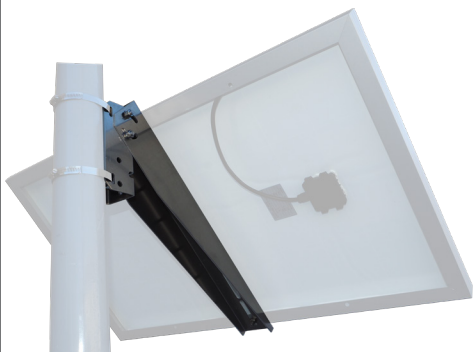
Hardware & Pole

Battery Enclosure



- Galvanized steel lockable battery enclosure will accommodate the rechargeable batteries and charge controller (padlock not included.)
- Designed to conform to NEMA 3R and IP22 rating standards for Outdoor Enclosures. Offering protection against rain, snow, and sleet. Meets the requirements of UL 508 "Rainproof enclosures".
- The battery enclosure can be mounted onto, or at the base of the pole, subject to battery selection.
- Enclosures with batteries larger than 92Ah will need to be mounted at the base of the pole.
- The enclosure has pre-drilled holes to enable secure installation to a concrete pad.
- For pole mounting, the battery enclosure includes mounting plates with slots for U-bolts or stainless steel banding.
- Silver/gray color finish. Custom colors by special order.

Solar Panel Mount



- Galvanized steel or aluminum solar panel pole mount hardware included (subject to solar panel dimensions).
- Allows for solar panel angle and direction adjustments.
- Can be attached in any direction and any height on the pole.
- Silver/gray color finish. Custom colors by special order only.

Pole

- Galvanized steel pole with square base plate for surface mounting.
- Anchor bolts and two templates are included.
- Pole height options are 10' or 15' (3m or 4.5m) and other sizes are available by special order.
- Silver/gray color finish. Custom colors by special order only.
- The location, wind factor, and ground conditions will affect the size of the foundation required.



Lowest Price*
Guarantee

Worldwide*
Shipping

10 Year*
System Warranty

20 Year*
Panel Warranty

Lifetime*
Tech Support

9120 Centerlinks Commerce Drive • Unit 3 • Fort Myers • FL • 33912 • USA • Telephone: 239-461-5522

MONDAY - FRIDAY 8:00AM - 8:00PM (US EASTERN TIME)

www.solarilluminations.com • sales@solarilluminations.com

*SUBJECT TO OUR TERMS & CONDITIONS, AND RETURNS POLICY

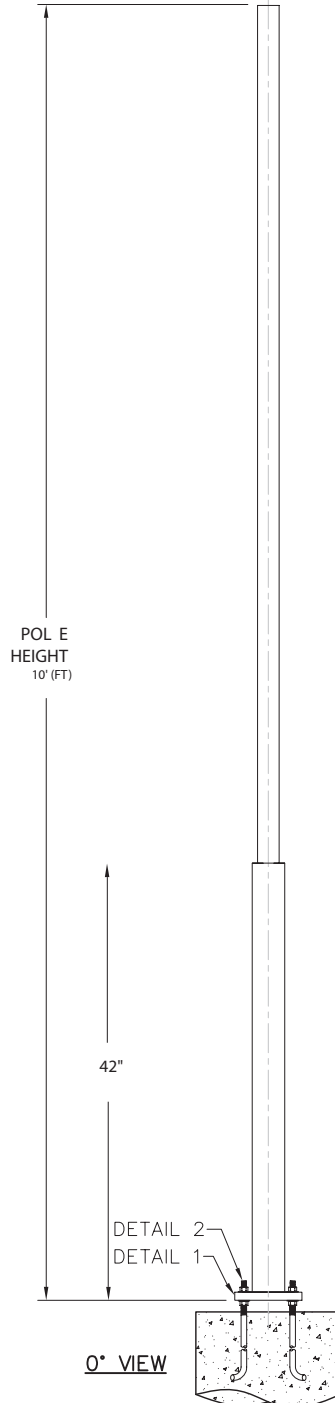


SL09

SOLAR LED AREA LIGHT WITH POLE

5W To 30W LED Power - Complete System

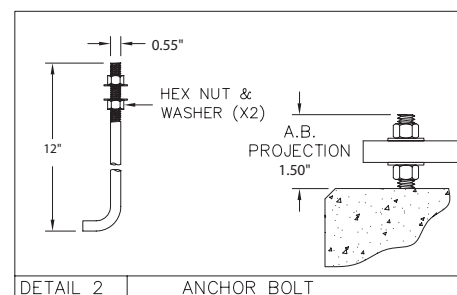
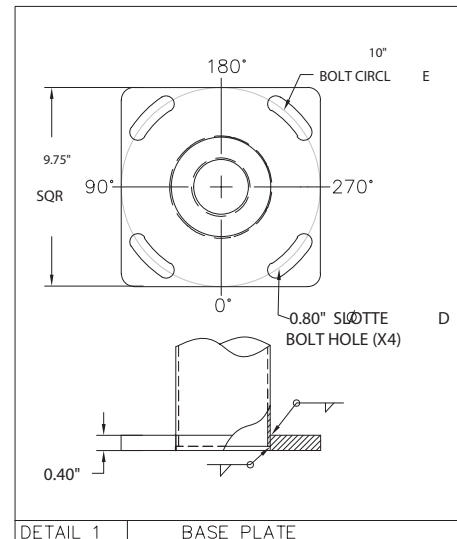
10' Light Pole
Steel Galvanized / Painted
Anchor Base



POLE DIMENSION DATA				
POLE LENGTH (FT)	BASE DIA. (IN)	TOP DIA. (IN)	GAUGE OR THK (IN)	WEIGHT (LBS)
10	4.5	3	12-GA (.109")	45

SOLAR ILLUMINATIONS POLES ARE ENGINEERED ACCORDING TO AASHTO STANDARDS AND ACCEPTED COMMERCIAL CRITERIA. PROPER SELECTION FOR AN APPLICATION IS BASED ON INFORMATION SUCH AS EPA, WIND ZONE, MOUNTING HEIGHT, AND PRODUCT ATTACHMENTS. THIS INFORMATION IS NECESSARY TO ENSURE CORRECT ENGINEERING. SOLAR ILLUMINATIONS ASSUMES NO RESPONSIBILITY FOR PROPER LOADING ANALYSIS AND/OR PRODUCT SELECTIONS. DESIGN INFORMATION AND SELECTION GUIDANCE OFFERED BY SOLAR ILLUMINATIONS CUSTOMER SUPPORT REPRESENTATIVES IS PROVIDED AS GENERAL GUIDELINES ONLY. THE CUSTOMER REMAINS SOLELY RESPONSIBLE FOR PROPER SELECTION OF THE LIGHT POLE, LUMINAIRE, AND/OR RELATED ACCESSORIES THAT ADHERE TO ALL APPLICABLE REQUIREMENTS, INCLUDING (BUT NOT LIMITED TO) EPA DESIGN CRITERIA, JOB SPECIFICATIONS, AND ENGINEERING REQUIREMENTS. TO ENSURE PROPER SELECTION OF THE LIGHT POLE, LUMINAIRE, ACCESSORIES AND/OR FOUNDATION, SOLAR ILLUMINATIONS RECOMMENDS THE CUSTOMER CONSULT A QUALIFIED ENGINEER TO ANALYZE THE LOADING AND DESIGN CRITERIA FOR THE SPECIFIC APPLICATION.

AASHTO
 DESIGN STANDARDS



*SUBJECT TO OUR TERMS & CONDITIONS, AND RETURNS POLICY

Lowest Price* **Worldwide*** **10 Year*** **20 Year*** **Lifetime***

Guarantee Shipping System Warranty Panel Warranty Tech Support

9120 Centerlinks Commerce Drive • Unit 3 • Fort Myers • FL • 33912 • USA • Telephone: 239-461-5522

MONDAY - FRIDAY 8:00AM - 8:00PM (US EASTERN TIME)

www.solarilluminations.com • sales@solarilluminations.com

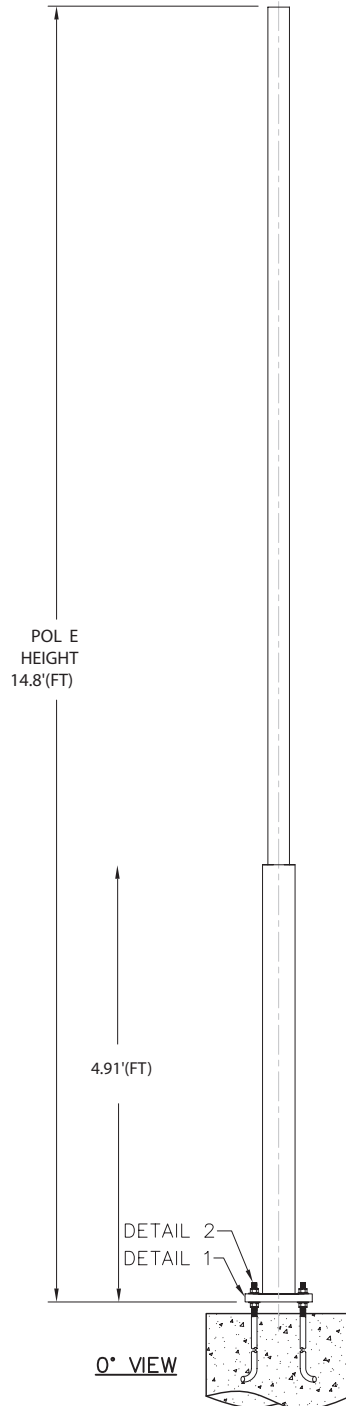


SL09

SOLAR LED AREA LIGHT WITH POLE

5W To 30W LED Power - Complete System

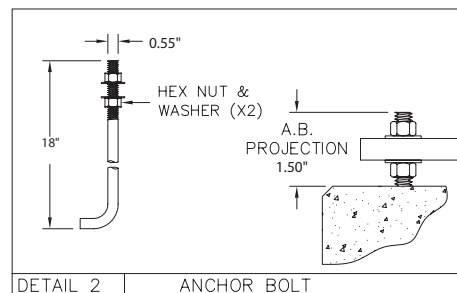
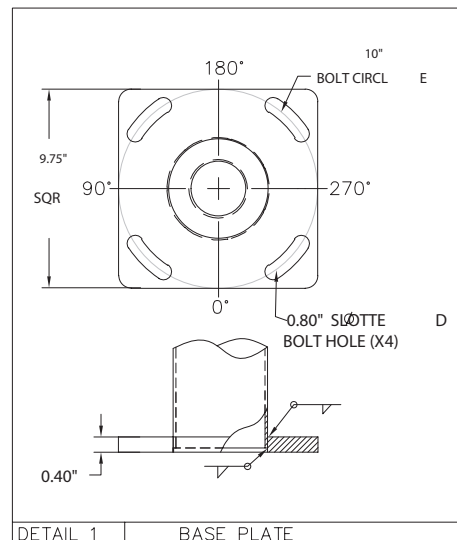
15' Standard Light Pole
Steel Galvanized / Painted
Anchor Base



POLE DIMENSION DATA				
POLE LENGTH (FT)	BASE DIA. (IN)	TOP DIA. (IN)	GAUGE OR THK (IN)	WEIGHT (LBS)
14.8	4.5	3	12-GA (.109")	75

SOLAR ILLUMINATIONS POLES ARE ENGINEERED ACCORDING TO AASHTO STANDARDS AND ACCEPTED COMMERCIAL CRITERIA. PROPER SELECTION FOR AN APPLICATION IS BASED ON INFORMATION SUCH AS EPA WIND ZONE, MOUNTING HEIGHT, AND PRODUCT ATTACHMENTS. THIS INFORMATION IS NECESSARY TO ENSURE CORRECT ENGINEERING. SOLAR ILLUMINATIONS ASSUMES NO RESPONSIBILITY FOR PROPER LOADING ANALYSIS AND/OR PRODUCT SELECTIONS. DESIGN INFORMATION AND SELECTION GUIDANCE OFFERED BY SOLAR ILLUMINATIONS CUSTOMER SUPPORT REPRESENTATIVES IS PROVIDED AS GENERAL GUIDELINES ONLY. THE CUSTOMER REMAINS SOLELY RESPONSIBLE FOR PROPER SELECTION OF THE LIGHT POLE, LUMINAIRE, AND/OR RELATED ACCESSORIES THAT ADHERE TO ALL APPLICABLE REQUIREMENTS, INCLUDING (BUT NOT LIMITED TO) EPA DESIGN CRITERIA, JOB SPECIFICATIONS, AND ENGINEERING REQUIREMENTS. TO ENSURE PROPER SELECTION OF THE LIGHT POLE, LUMINAIRE, ACCESSORIES AND/OR FOUNDATION, SOLAR ILLUMINATIONS RECOMMENDS THE CUSTOMER CONSULT A QUALIFIED ENGINEER TO ANALYZE THE LOADING AND DESIGN CRITERIA FOR THE SPECIFIC APPLICATION.

AASHTO
 DESIGN STANDARDS



*SUBJECT TO OUR TERMS & CONDITIONS, AND RETURNS POLICY

Lowest Price* **Worldwide*** **10 Year*** **20 Year*** **Lifetime***

Guarantee Shipping System Warranty Panel Warranty Tech Support

9120 Centerlinks Commerce Drive • Unit 3 • Fort Myers • FL • 33912 • USA • Telephone: 239-461-5522

MONDAY - FRIDAY 8:00AM - 8:00PM (US EASTERN TIME)

www.solarilluminations.com • sales@solarilluminations.com



SL09

SOLAR LED AREA LIGHT WITH POLE
5W To 30W LED Power - Complete System



*SUBJECT TO OUR TERMS & CONDITIONS, AND RETURNS POLICY

Lowest Price* **Guarantee** **Worldwide*** **Shipping** **10 Year*** **System Warranty** **20 Year*** **Panel Warranty** **Lifetime*** **Tech Support**

9120 Centerlinks Commerce Drive • Unit 3 • Fort Myers • FL • 33912 • USA • Telephone: 239-461-5522

MONDAY - FRIDAY 8:00AM - 8:00PM (US EASTERN TIME)

www.solarilluminations.com • sales@solarilluminations.com