



# FL09

## Solar Sign Light System With 4 Light Fixtures - Complete System



- Sold as a complete, professional grade, solar powered sign lighting system.
- Ideal for large sized signs, banners, billboards, double sided signs, and small double sided billboards, etc.
- Illumination time can be designed subject to project requirements (dusk to dawn all year round, single timed mode, dial timed mode, etc.)
- Choice of sign light fixture 5W, 10W, 20W, or 30W LED power.
- Choice of LED color temperature (warm white, daylight white).
- The light fixtures can be permanently dimmed to any Wattage between 1 and 30 Watts so you can request a specific LED power or lumen output for your project.
- The solar panel sizes (wattage) and battery sizes (capacity) are calculated based on the total LED power (wattage), the geographic location of the installation site, and the total nightly hours of illumination.



\*SUBJECT TO OUR TERMS & CONDITIONS, AND RETURNS POLICY

**Lowest Price\***  
Guarantee



**Worldwide\***  
Shipping



**10 Year\***  
System Warranty



**20 Year\***  
Panel Warranty



**Lifetime\***  
Tech Support



9120 Centerlinks Commerce Drive • Unit 3 • Fort Myers • FL • 33912 • USA • Telephone: 239-461-5522

MONDAY - FRIDAY 8:00AM - 8:00PM (US EASTERN TIME)

[www.solarilluminations.com](http://www.solarilluminations.com) • [sales@solarilluminations.com](mailto:sales@solarilluminations.com)



# FL09

Solar Sign Light System  
With 4 Light Fixtures - Complete System

## Solar Makes Sense

Using a solar lighting system is often **cheaper than trenching** cables to remote sites or through parking lots, under roads and sidewalks.



**No monthly bills** for electric usage, meter fees, or taxes.

**Federal and local incentives** may be available to offset the cost of the system. View our website for current incentives.



**Renewable energy.** Use the sun's unlimited power as a clean source of renewable energy.

**Green Image.** Let people know your company or organization is doing its part in reducing its reliance on unclean energy.



## Purchase with Confidence



Established in 2002 with offices and warehouse located in Fort Myers, Florida where we store, assemble, ship, and support our products.



We stand behind our systems with a 20 year limited warranty on the solar panels, and a 10 year limited warranty on the system.



Our superior customer service and support is proven with our A+ rating with the Better Business Bureau.



Technical support is available for life! We'll be here to assist you with support and troubleshooting if the need arises.

**Lowest Price\***  
Guarantee

**Worldwide\***  
Shipping

**10 Year\***  
System Warranty

**20 Year\***  
Panel Warranty

**Lifetime\***  
Tech Support



9120 Centerlinks Commerce Drive • Unit 3 • Fort Myers • FL • 33912 • USA • Telephone: 239-461-5522

MONDAY - FRIDAY 8:00AM - 8:00PM (US EASTERN TIME)

[www.solarilluminations.com](http://www.solarilluminations.com) • [sales@solarilluminations.com](mailto:sales@solarilluminations.com)

\*SUBJECT TO OUR TERMS & CONDITIONS, AND RETURNS POLICY



# FL09

## Solar Sign Light System

### With 4 Light Fixtures - Complete System



This sign light system is supplied with four light fixtures offered in 5W, 10W, 20W, or 30W. Increasing the power (Wattage) of the light fixture increases the light spread, as well as the light intensity. When illuminating one sign face, the light fixtures are capable of illuminating signs with the dimensions as follows:

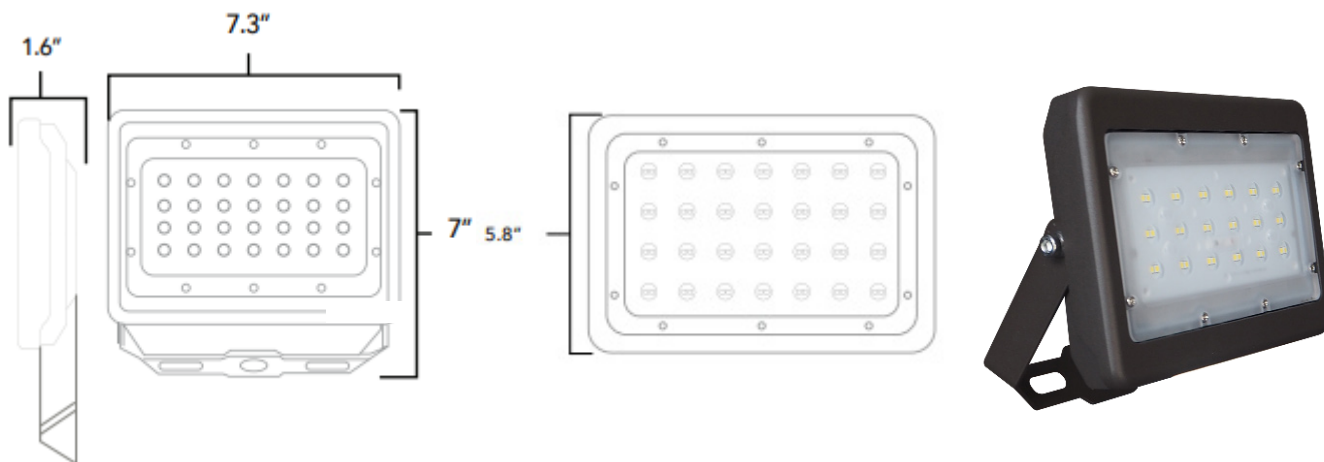
5W: Up to 24' x 8'      20W: Up to 42' x 12'  
10W: Up to 36' x 10'      30W: Up to 48' x 14'

The above sign dimensions are based on the light fixtures mounted approx. 6' from the face of the sign. Position of the light fixture may need to vary, as required.



The nightly illumination time is pre-programmed as per your requirements e.g. 8 hours, dusk to dawn, etc. Single or dual timed modes and alternative illumination times are available upon request.

Color Temperature	5700k	Waterproof Rating	IP65
CRI	>70	LED Brand	LUMILEDS
Input Power	5W, 10W, 20W or 30W	LED Type	LUXEON 3030 2D
Lumens	5W 665 lm	Cable Length	20'
	10W 1330 lm	PF	>0.9
	20W 2660 lm	Housing	Aluminum, PC, Steel
	30W 3990 lm	Housing Color	Brown / Bronze
Viewing Angle	7H7V	Operating Temperature	-4° to 113°F
Input Voltage	24V DC	Safety Certification	UL, cUL, DLC
Driver Model	Meanwell		



**Lowest Price\***  
Guarantee



**Worldwide\***  
Shipping



**10 Year\***  
System Warranty



**20 Year\***  
Panel Warranty



**Lifetime\***  
Tech Support



9120 Centerlinks Commerce Drive • Unit 3 • Fort Myers • FL • 33912 • USA • Telephone: 239-461-5522

MONDAY - FRIDAY 8:00AM - 8:00PM (US EASTERN TIME)

www.solarilluminations.com • sales@solarilluminations.com

\*SUBJECT TO OUR TERMS & CONDITIONS, AND RETURNS POLICY





# FL09

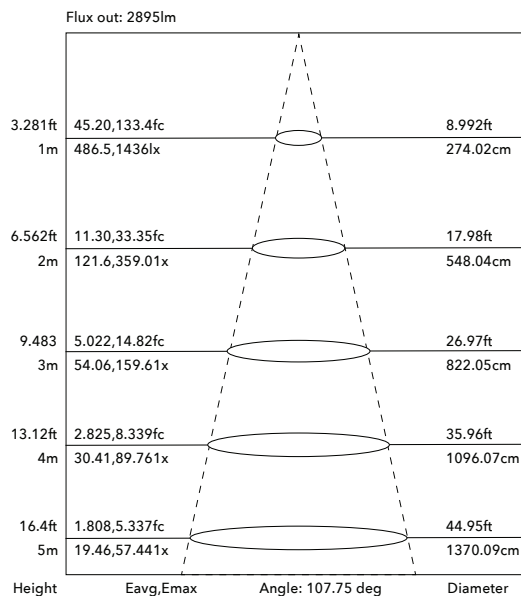
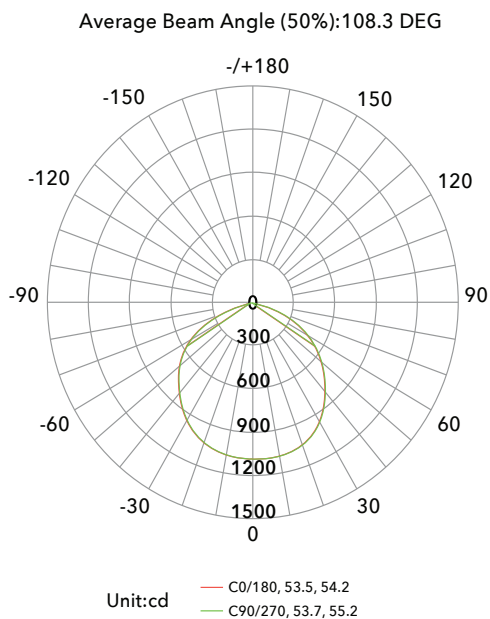
## Solar Sign Light System

### With 4 Light Fixtures - Complete System

#### LIGHT DISTRIBUTION TESTING PARAMETERS

Data of Lamp		Photometric Data			
Model		Imax (cd)	1437	S/MH (C0/180)	1.28
Nominal Power (W)	30	LOR (%)	100.0	S/MH (C90/270)	1.30
Rated Voltage (V)	24	Total Flux (lm)	3736.9	η UP, DN (C0-180)	0.1,50.6
Nominal Flux (1m)	3736.91	CIE Class	Direct	η UP, DN (C180-360)	0.1, 49.3
Lamps Inside	1	η up (%)	0.1	CIBSE SHR NOM	1.25
Test Voltage	24	η down (%)	99.9	CIBSE SHR MAX	1.35

#### LUMINOUS INTENSITY DISTRIBUTION DIAGRAM



\*SUBJECT TO OUR TERMS & CONDITIONS, AND RETURNS POLICY

**Lowest Price\***  
Guarantee



**Worldwide\***  
Shipping



**10 Year\***  
System Warranty



**20 Year\***  
Panel Warranty



**Lifetime\***  
Tech Support



9120 Centerlinks Commerce Drive • Unit 3 • Fort Myers • FL • 33912 • USA • Telephone: 239-461-5522

MONDAY - FRIDAY 8:00AM - 8:00PM (US EASTERN TIME)

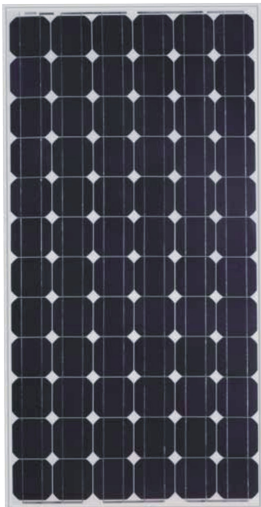
www.solarilluminations.com • sales@solarilluminations.com



# FL09

## Solar Sign Light System

### With 4 Light Fixtures - Complete System



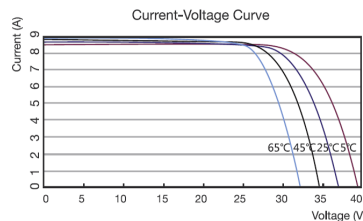
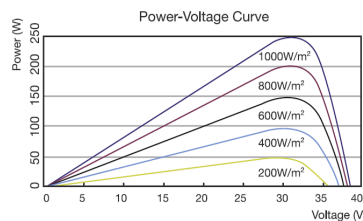
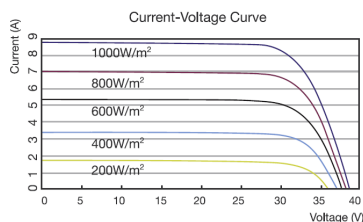
## Solar Panel

Systems are supplied with high quality monocrystalline or polycrystalline solar panels with the highest performance and efficiency. They are designed to endure the harshest environments, and are guaranteed to provide power for well over 20 years. Typically manufactured in the USA, Canada, or Germany. The solar panel power is subject to LED consumption, installation location, and illumination period. Please consult with our engineers for specific details and solar power recommendations.

### Photovoltaic Module

- Highly efficient monocrystalline or polycrystalline solar panel with aluminum frame, anti-aging, and encapsulated membrane.
- Anti-reflective and anti-soiling surface that reduces power losses from dirt and dust.
- Certified to withstand high wind loads (340PSI) and snow loads (780PSI); and resistance to high salt and ammonia.
- Manufactured to international standards, verified and certified by independent testing laboratories. (UL, ETL, IEC, MCS, & TUV)
- Assembled to strict quality control standards; international standards ISO 9001 and ISO 14001.
- Range of solar panel power available from 70W to +1,500W.
- The solar panel power is subject to LED consumption, installation location, and illumination period. Please consult our engineers for specific solar power requirements.
- Solar panels can be supplied in a single or dual format
- Typical solar panel life is over 30 years, subject to environmental factors.
- 90W panel dimensions: 32.35" x 26.22" x 1.5"
- 100W panel dimensions: 40.25" x 26.25" x 1.5"
- 120W panel dimensions: 47.87" x 26.43" x 1.5"
- 170W panel dimensions: 44" x 38.7" x 1.5" (or may be supplied as two 90W panels).
- 275W panel dimensions: 64.38" x 39" x 1.5"
- 340W panel consists of two 170W panels.

### MC4 Connector



**Lowest Price\***  
Guarantee

**Worldwide\***  
Shipping

**10 Year\***  
System Warranty

**20 Year\***  
Panel Warranty

**Lifetime\***  
Tech Support

9120 Centerlinks Commerce Drive • Unit 3 • Fort Myers • FL • 33912 • USA • Telephone: 239-461-5522

MONDAY - FRIDAY 8:00AM - 8:00PM (US EASTERN TIME)

[www.solarilluminations.com](http://www.solarilluminations.com) • [sales@solarilluminations.com](mailto:sales@solarilluminations.com)

\*SUBJECT TO OUR TERMS & CONDITIONS, AND RETURNS POLICY



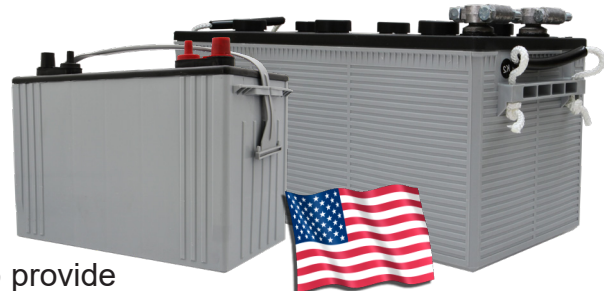
# FL09

## Solar Sign Light System

### With 4 Light Fixtures - Complete System



"EastPenn batteries are engineered and tested to provide reliable, long-lasting power for Photovoltaic (PV) and renewable energy applications where frequent deep cycles are required and minimum maintenance is desirable."

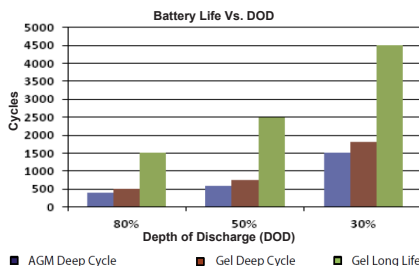
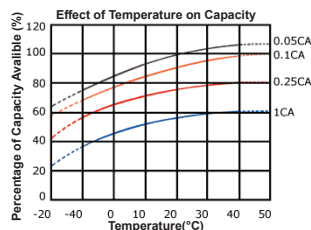


Made in the USA



### Battery

- Manufactured by: East Penn Manufacturing Co. Inc.
- 100% made in the USA.
- System supplied standard with two 12 Volt batteries. Batteries are wired in series to make a 24 Volt system.
- Available battery capacities range from 32Ah to 245Ah (per battery).
- Choice of two battery types: Absorbed Glass Mat (AGM) or Gel Cell.
- Please consult our engineers for specific battery capacity requirements.
- Classified as Non-spillable (defined by DOT, ICAO and IATA), NonHAZMAT, and valve regulate.
- Conforms to ISO9001, ISO/TS 16949, and ISO14001 standards.
- Typical battery life is approximately 5 to 7 years, subject to environmental factors.



### VRLA Technology

VRLA batteries are maintenance free for life. VRLA stands for Valve Regulated Lead Acid, which means the batteries are sealed. Gas will only escape through the safety valves in the case of overcharging or cell failure.

AGM and Gel batteries have exceptional discharge recovery, even after deep or prolonged discharge. However, it should be noted that repetitive deep discharge and prolonged deep discharge have a negative influence on the service life of all lead acid batteries.

Gel batteries in general have a longer service life and better cycle capacity than AGM batteries.

Please Note: The rated capacity of our AGM or gel deep cycle batteries refer to 20 hour discharge rate (i.e. 0.05CA). Most products actually operate near, or at a 100 hour discharge rate (i.e. 0.01CA) and thus actual available battery capacity is slightly higher than the advertised rate.

The total available battery power is measured in watt-hour (Wh) or V\*Ah. When comparing our total battery capacity with competitor's, please note that the battery capacity from a 12V system is not interchangeable with the battery capacity of a 24V system. However, the total battery power (i.e. watt-hours) is always comparable provided the correct system voltage is considered during calculation.



**Lowest Price Guarantee** **Worldwide Shipping** **10 Year System Warranty** **20 Year Panel Warranty** **Lifetime Tech Support**

9120 Centerlinks Commerce Drive • Unit 3 • Fort Myers • FL • 33912 • USA • Telephone: 239-461-5522

MONDAY - FRIDAY 8:00AM - 8:00PM (US EASTERN TIME)

[www.solarilluminations.com](http://www.solarilluminations.com) • [sales@solarilluminations.com](mailto:sales@solarilluminations.com)

\*SUBJECT TO OUR TERMS & CONDITIONS, AND RETURNS POLICY

# FL09

## Solar Sign Light System

### With 4 Light Fixtures - Complete System



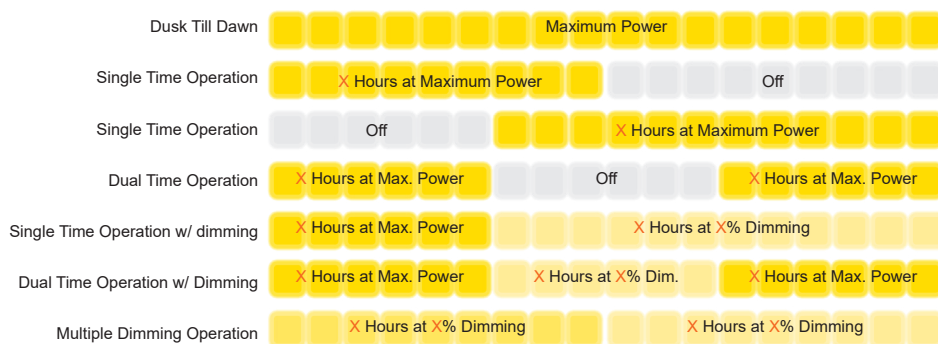
## Maximum Power Point Tracking

Supplied standard with the most advanced and sophisticated MPPT charge controller technology. Allowing for full system programmability and light control; including active dimming and intelligent battery management. MPPT technology increases power generation by up to 30% during inclement periods, and intelligent battery management provides extended battery life and extra protection against excessive discharge.

## MPPT Control Module

- The MPPT controller will improve energy harvest by up to 30% compared to PWM charge controllers. Especially in the case of cold cloudy winter weather, when light intensity is changing continuously.
- Offers full programmability of load output: dusk to dawn, multi-timed mode, and integrated dimming (all standard features).
- Intelligent battery management software is used to protect the battery from being excessively discharged. The controller will monitor the state of charge on the battery, and if needed, day by day slightly increase the load disconnect level (i. e. disconnect the load earlier) until the harvested solar energy is sufficient to recharge the battery to nearly the full 100% at least once a week. Allowing for the longest life possible from the batteries.
- Controller size and ratings are subject to solar panel and battery specifications.
- \*Supports real time data monitoring, 30 day performance history, and user programmability from Apple or Android smartphones, tablets, etc. Use of this feature requires the optional MPPT Bluetooth Dongle.

The comprehensive light control system allows for extensive configuration, including dynamic activation and optional dimming. Lighting activation is controlled by the charge controller and solar panel. Dimming of the luminaire is adjusted by percentage, i.e 100% is equal to full power, 50% is equal to half power, etc.



\*The lighting control options are variable, and not all options are listed. If you require a specific control operation not listed, please contact one of our engineers to verify feasibility.

**\*\*A midnight feature is available as a timed operation parameter. Midnight is determined by calculating the middle of the night and does not necessarily mean 12AM (although it will be close).**

It also can be adjusted earlier or later by X number of hours.



\*Real time data monitoring,  
30 day performance history,  
and user programmability  
from Apple or Android  
smartphones.



**SUBJECT TO OUR TERMS & CONDITIONS, AND RETURNS POLICY**

**Lowest Price\***  
Guarantee

Worldwide Shipping 

**10 Year\***  
System Warranty 

**20 Year\***  
Panel Warranty 

**Lifetime\***  
Tech Support 

9120 Centerlinks Commerce Drive • Unit 3 • Fort Myers • FL • 33912 • USA • Telephone: 239-461-5522

**MONDAY - FRIDAY 8:00AM - 8:00PM (US EASTERN TIME)**

www.solarilluminations.com • sales@solarilluminations.com





# FL09

## Solar Sign Light System

### With 4 Light Fixtures - Complete System

We stock several types of battery enclosures, ranging from various sizes and construction materials. The type of battery enclosure provided will depend on the size of the batteries required, and/or how the battery enclosure needs to be mounted. All battery enclosures are weather rated, designed for interior or exterior installation.

BE02



BE02 Battery Enclosure

- Galvanized steel construction.
- Fitted with 4 outlets, and one solar panel input.
- Hinged lockable lid (padlock not included).
- Dimensions: 13" x 9 7/8" x 8 7/8" (330mm x 250mm x 225mm)
- Dimensions including lid over-hang: 9 7/8" x 15 6/8" x 8 7/8" (250mm x 400mm x 225mm)

BE03



BE03 Battery Enclosure

- Galvanized steel construction.
- Fitted with 8 outlets, and one solar panel input.
- Hinged lockable lid (padlock not included).
- Dimensions: 18 1/8" x 14 3/8" x 11 3/16" (460mm x 365mm x 284mm)
- Dimensions including lid over-hang and side flanges: 21 1/4" x 15 3/8" x 11 3/16" (510mm x 390mm x 284mm)

BE05

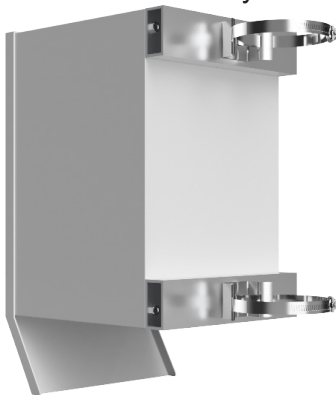


BE05 Battery Enclosure

- Galvanized steel construction.
- Hinged lockable door (padlock not included).
- Cable entry hole on the back of the enclosure.
- Dimensions: 20 1/2" x 13 5/8" x 33" (521mm x 345mm x 838mm)

### Optional Battery Enclosure Mounting Hardware

If you need to mount your battery enclosure to a round post or pole, you can purchase our optional battery enclosure pole mount hardware kits.



SP13

The SP13 battery enclosure pole mount kit can be used to mount our BE02 or BE03 to a round pole or post. Pole diameter options vary between 2" to 8" diameter.



\*SUBJECT TO OUR TERMS & CONDITIONS, AND RETURNS POLICY

**Lowest Price\*** **Guarantee** **Worldwide\*** **Shipping** **10 Year\*** **System Warranty** **20 Year\*** **Panel Warranty** **Lifetime\*** **Tech Support**

9120 Centerlinks Commerce Drive • Unit 3 • Fort Myers • FL • 33912 • USA • Telephone: 239-461-5522

MONDAY - FRIDAY 8:00AM - 8:00PM (US EASTERN TIME)

[www.solarilluminations.com](http://www.solarilluminations.com) • [sales@solarilluminations.com](mailto:sales@solarilluminations.com)

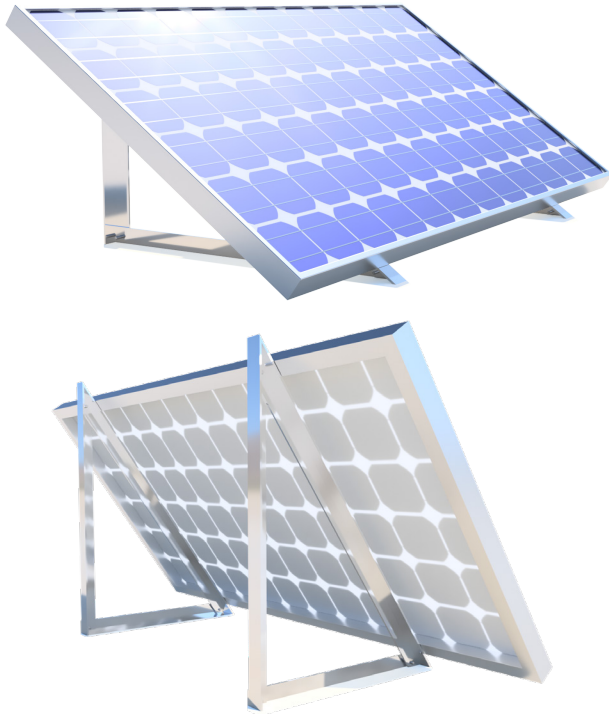




## FL09

### Solar Sign Light System

#### With 4 Light Fixtures - Complete System



Each solar panel is supplied with a pair of metal mounting triangles. These triangles allow the installer to mount the solar panel at an appropriate angle to a solid vertical or horizontal surface (such as a wall or concrete pad).

The panels can be installed in numerous ways, but note that the solar must be mounted at an appropriate angle ( $15^\circ$  plus site latitude), face due south for the northern hemisphere and north for the southern hemisphere, and be in clear view of the sun (with no shading).

If any of these requirements are not possible, please notify us prior to ordering so we can calculate solar panel sizing options.

### Optional Solar Panel Mounting Hardware

Below are solar panel pole mount options that can be purchased as an optional extra.

#### SP11

Can accommodate panels up to 39" wide



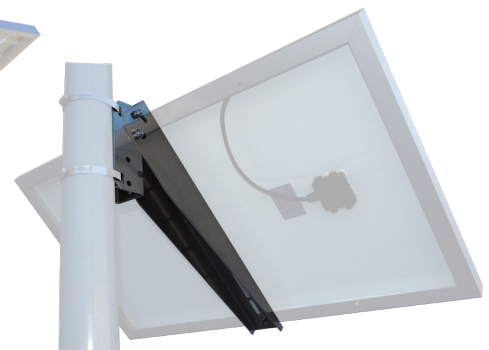
#### SP12

Can accommodate one or two panels, up to 39" wide each.



#### SP08

Can accommodate panels up to 26" wide.



**Lowest Price\***  
Guarantee



**Worldwide\***  
Shipping



**10 Year\***  
System Warranty



**20 Year\***  
Panel Warranty



**Lifetime\***  
Tech Support



9120 Centerlinks Commerce Drive • Unit 3 • Fort Myers • FL • 33912 • USA • Telephone: 239-461-5522

MONDAY - FRIDAY 8:00AM - 8:00PM (US EASTERN TIME)

[www.solarilluminations.com](http://www.solarilluminations.com) • [sales@solarilluminations.com](mailto:sales@solarilluminations.com)

\*SUBJECT TO OUR TERMS & CONDITIONS, AND RETURNS POLICY



# FL09

Solar Sign Light System  
With 4 Light Fixtures - Complete System



Lowest Price\* Guarantee Worldwide\* Shipping 10 Year\* System Warranty 20 Year\* Panel Warranty Lifetime\* Tech Support

9120 Centerlinks Commerce Drive • Unit 3 • Fort Myers • FL • 33912 • USA • Telephone: 239-461-5522

MONDAY - FRIDAY 8:00AM - 8:00PM (US EASTERN TIME)

[www.solarilluminations.com](http://www.solarilluminations.com) • [sales@solarilluminations.com](mailto:sales@solarilluminations.com)