



FL09

Solar Floodlight System

With 4 Light Fixtures - Complete System



- Sold as a complete, professional, commercial grade, solar powered floodlighting system.
- Multi-purpose use. Ideal for illuminating general areas, objects, or opens spaces, internally or externally.
- Illumination time can be designed subject to project requirements (dusk to dawn all year round, single timed mode, dual timed mode, etc.).
- Choice of floodlight fixture 5W, 10W, 20W or 30W LED power. Higher LED power by special order.
- Choice of LED color temperature (warm white, daylight white, or cool white).
- Optional pole or pole mount hardware available.
- The light fixture can be permanently dimmed to any wattage between 1 and 30 Watts.
- The solar panel sizes (wattage) and battery sizes (capacity) are calculated based on the total LED power (wattage), the geographic location of the installation site, and the total nightly hours of illumination.



*SUBJECT TO OUR TERMS & CONDITIONS, AND RETURNS POLICY

Lowest Price*
Guarantee



Worldwide*
Shipping



10 Year*
System Warranty



20 Year*
Panel Warranty



Lifetime*
Tech Support



9120 Centerlinks Commerce Drive • Unit 3 • Fort Myers • Florida • 33912 • USA • Telephone: 239-461-5522

MONDAY - FRIDAY 8:00AM - 8:00PM (US EASTERN TIME)

www.solarilluminations.com • sales@solarilluminations.com



FL09

Solar Floodlight System With 4 Light Fixtures - Complete System

Solar Makes Sense

Using a solar lighting system is often **cheaper than trenching** cables to remote sites or through parking lots, under roads and sidewalks.



No monthly bills for electric usage, meter fees, or taxes.

Federal and local incentives may be available to offset the cost of the system. View our website for current incentives.



Renewable energy. Use the sun's unlimited power as a clean source of renewable energy.

Green Image. Let people know your company or organization is doing its part in reducing its reliance on unclean energy.



Purchase with Confidence



Established in 2002 with offices and warehouse located in Fort Myers, Florida where we store, assemble, ship, and support our products.



We stand behind our systems with a 20 year limited warranty on the solar panels, and a 10 year limited warranty on the system.



Our superior customer service and support is proven with our A+ rating with the Better Business Bureau.



Technical support is available for life! We'll be here to assist you with support and troubleshooting if the need arises.

Lowest Price* Guarantee

Worldwide* Shipping

10 Year* System Warranty

20 Year* Panel Warranty

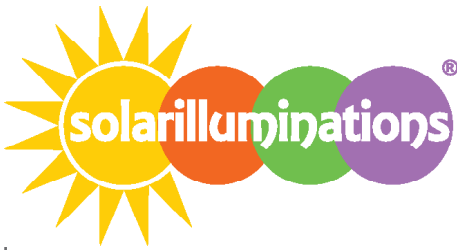
Lifetime* Tech Support

9120 Centerlinks Commerce Drive • Unit 3 • Fort Myers • Florida • 33912 • USA • Telephone: 239-461-5522

MONDAY - FRIDAY 8:00AM - 8:00PM (US EASTERN TIME)

www.solarilluminations.com • sales@solarilluminations.com

*SUBJECT TO OUR TERMS & CONDITIONS, AND RETURNS POLICY



FL09

Solar Floodlight System

With 4 Light Fixtures - Complete System

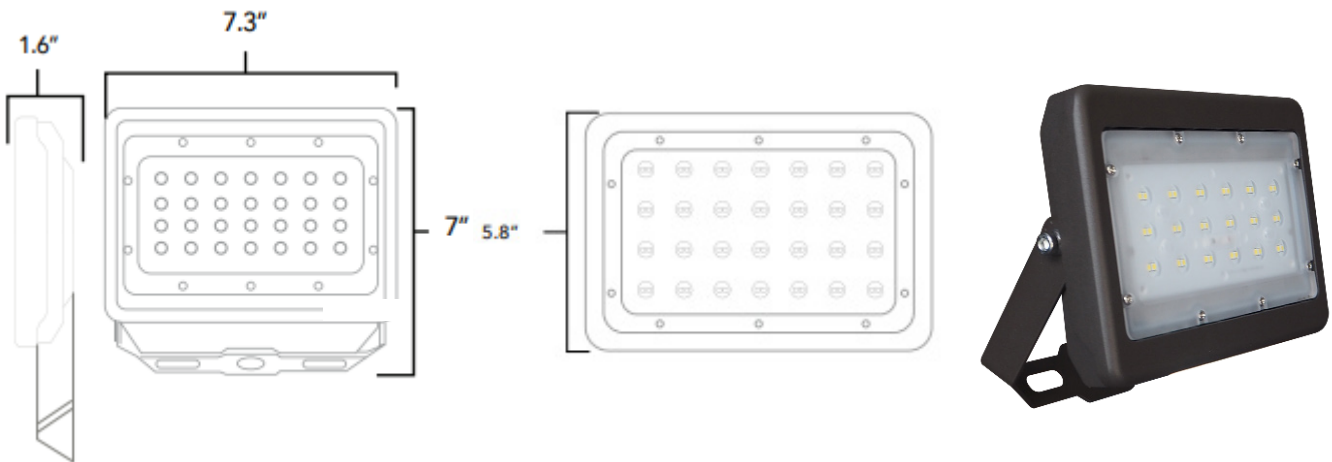


This multi-purpose floodlight system is supplied with four light fixtures and offered with a choice of 5W, 10W, 20W, or 30W. Increasing the LED power (Wattage) of the light fixture increases the lighting distribution, as well as the light intensity (lumen output). Choice of LED color temperature (CCT).

The nightly illumination time is pre-programmed as per your requirements e.g. 8 hours, dusk to dawn, etc. Single or dual times modes and alternative illumination times are available upon request. One or more motion sensors, wired or remote controlled on/off switches, and/or timers can be added to the system upon request.



| | | | |
|-------------------|---------------------|-----------------------|---------------------|
| Color Temperature | 5700k | Waterproof Rating | IP65 |
| CRI | >70 | LED Brand | LUMILEDS |
| Input Power | 5W, 10W, 20W or 30W | LED Type | LUXEON 3030 2D |
| Lumens | 5W 665 lm | Cable Length | 20' |
| | 10W 1330 lm | PF | >0.9 |
| | 20W 2660 lm | Housing | Aluminum, PC, Steel |
| | 30W 3990 lm | Housing Color | Brown / Bronze |
| Viewing Angle | 7H7V | Operating Temperature | -4° to 113°F |
| Input Voltage | 24V DC | Safety Certification | UL, cUL, DLC |
| Driver Model | Meanwell | | |



*SUBJECT TO OUR TERMS & CONDITIONS, AND RETURNS POLICY

Lowest Price* **Worldwide*** **10 Year*** **20 Year*** **Lifetime***
 Guarantee Shipping System Warranty Panel Warranty Tech Support

9120 Centerlinks Commerce Drive • Unit 3 • Fort Myers • Florida • 33912 • USA • Telephone: 239-461-5522

MONDAY - FRIDAY 8:00AM - 8:00PM (US EASTERN TIME)

www.solarilluminations.com • sales@solarilluminations.com



FL09

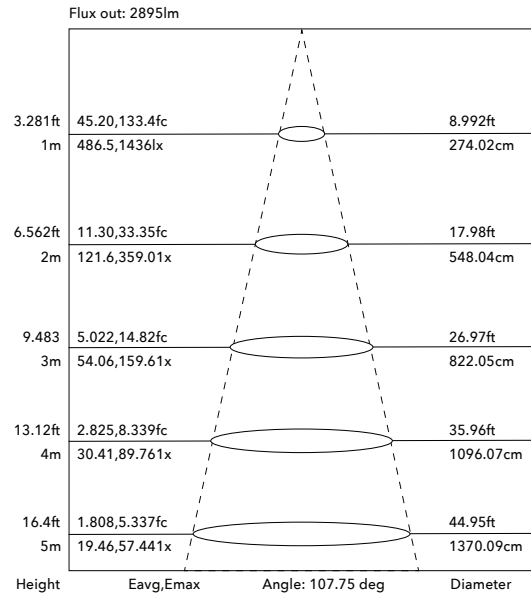
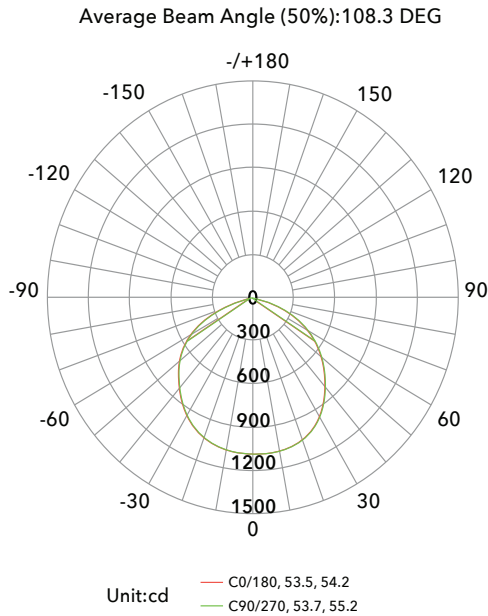
Solar Floodlight System

With 4 Light Fixtures - Complete System

LIGHT DISTRIBUTION TESTING PARAMETERS

| Data of Lamp | | Photometric Data | | | Eff: 129.56 lm/W |
|-------------------|---------|-----------------------|--------|---------------------|------------------|
| Model | | I _{max} (cd) | 1437 | S/MH (C0/180) | 1.28 |
| Nominal Power (W) | 30 | LOR (%) | 100.0 | S/MH (C90/270) | 1.30 |
| Rated Voltage (V) | 24 | Total Flux (lm) | 3736.9 | η UP, DN (C0-180) | 0.1, 50.6 |
| Nominal Flux (1m) | 3736.91 | CIE Class | Direct | η UP, DN (C180-360) | 0.1, 49.3 |
| Lamps Inside | 1 | η up (%) | 0.1 | CIBSE SHR NOM | 1.25 |
| Test Voltage | 24 | η down (%) | 99.9 | CIBSE SHR MAX | 1.35 |

LUMINOUS INTENSITY DISTRIBUTION DIAGRAM



*SUBJECT TO OUR TERMS & CONDITIONS, AND RETURNS POLICY

Lowest Price* **Worldwide*** **10 Year*** **20 Year*** **Lifetime***
 Guarantee Shipping System Warranty Panel Warranty Tech Support

9120 Centerlinks Commerce Drive • Unit 3 • Fort Myers • Florida • 33912 • USA • Telephone: 239-461-5522

MONDAY - FRIDAY 8:00AM - 8:00PM (US EASTERN TIME)

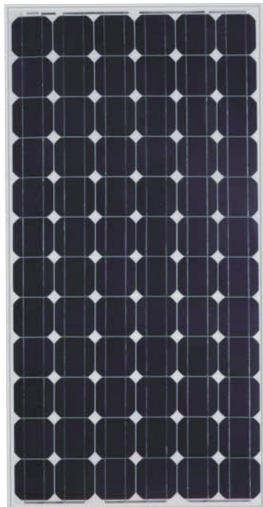
www.solarilluminations.com • sales@solarilluminations.com



FL09

Solar Floodlight System

With 4 Light Fixtures - Complete System



20
YEAR
GUARANTEE

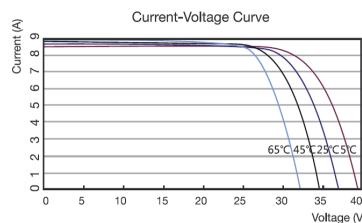
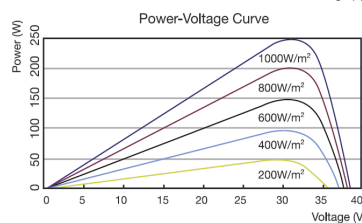
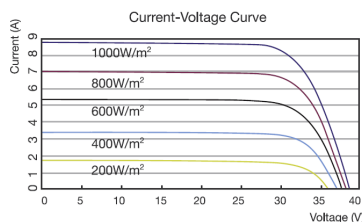
Solar Panel

Systems are supplied with high quality monocrystalline or polycrystalline solar panels with the highest performance and efficiency. They are designed to endure the harshest environments, and are guaranteed to provide power for well over 20 years. Typically manufactured in the USA, Canada, or Germany. The solar panel power is subject to LED consumption, installation location, and illumination period. Please consult with our engineers for specific details and solar power recommendations.

Photovoltaic Module

- Highly efficient monocrystalline or polycrystalline solar panel with aluminum frame, anti-aging, and encapsulated membrane.
- Anti-reflective and anti-soiling surface that reduces power losses from dirt and dust.
- Certified to withstand high wind loads (340PSI) and snow loads (780PSI); and resistance to high salt and ammonia.
- Manufactured to international standards, verified and certified by independent testing laboratories. (UL, ETL, IEC, MCS, & TUV)
- Assembled to strict quality control standards; international standards ISO 9001 and ISO 14001.
- Range of solar panel power available from 70W to over 1,500W.
- The solar panel power is subject to LED consumption, installation location, and illumination period. Please consult our engineers for specific solar power requirements.
- Solar panels can be supplied in a single or dual format.
- Typical solar panel life is over 30 years, subject to environmental factors.
- 65W panel dimensions: 34.25" x 20.13" x 1.5"
- 90W panel dimensions: 32.35" x 26.22" x 1.5"
- 100W panel dimensions: 40.25" x 26.25" x 1.5"
- 120W panel dimensions: 47.87" x 26.43" x 1.5"
- 170W panel dimensions: 44" x 38.7" x 1.5" (or may be supplied as two 90W panels).
- 275W panel dimensions: 64.38" x 39" x 1.5"
- 340W panel consists of two 170W panels.

MC4 Connector



Lowest Price
Guarantee

Worldwide
Shipping

10 Year
System Warranty

20 Year
Panel Warranty

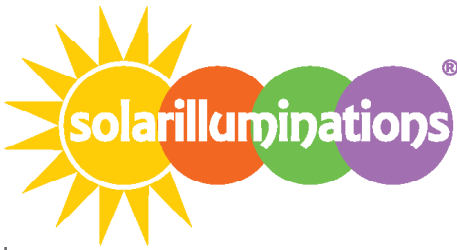
Lifetime
Tech Support

9120 Centerlinks Commerce Drive • Unit 3 • Fort Myers • Florida • 33912 • USA • Telephone: 239-461-5522

MONDAY - FRIDAY 8:00AM - 8:00PM (US EASTERN TIME)

www.solarilluminations.com • sales@solarilluminations.com

*SUBJECT TO OUR TERMS & CONDITIONS, AND RETURNS POLICY



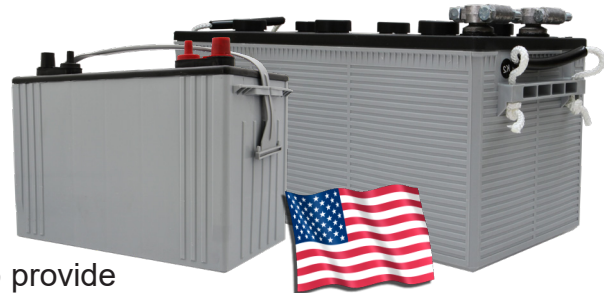
FL09

Solar Floodlight System

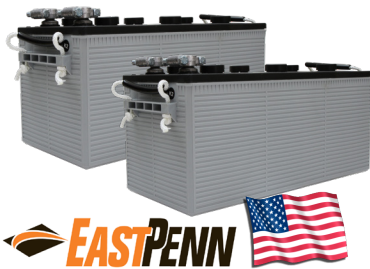
With 4 Light Fixtures - Complete System



“EastPenn batteries are engineered and tested to provide reliable, long-lasting power for Photovoltaic (PV) and renewable energy applications where frequent deep cycles are required and minimum maintenance is desirable.”



Made in the USA



Battery

- Manufactured by: East Penn Manufacturing Co. Inc.
- 100% made in the USA.
- System supplied standard with two 12 Volt batteries. Batteries are wired in series to make a 24 Volt system.
- Available battery capacities range from 32Ah to 245Ah (per battery).
- Choice of two battery types: Absorbed Glass Mat (AGM) or Gel Cell.
- Please consult our engineers for specific battery capacity requirements.
- Classified as Non-spillable (defined by DOT, ICAO and IATA), NonHAZMAT, and valve regulate.
- Conforms to ISO9001, ISO/TS 16949, and ISO14001 standards.
- Typical battery life is approximately 5 to 7 years, subject to environmental factors.

VRLA Technology

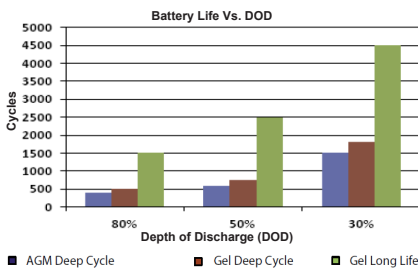
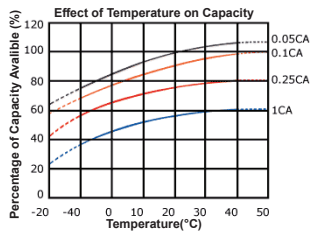
VRLA batteries are maintenance free for life. VRLA stands for Valve Regulated Lead Acid, which means the batteries are sealed. Gas will only escape through the safety valves in the case of overcharging or cell failure.

AGM and Gel batteries have exceptional discharge recovery, even after deep or prolonged discharge. However, it should be noted that repetitive deep discharge and prolonged deep discharge have a negative influence on the service life of all lead acid batteries.

Gel batteries in general have a longer service life and better cycle capacity than AGM batteries.

Please Note: The rated capacity of our AGM or gel deep cycle batteries refer to 20 hour discharge rate (i.e. 0.05CA). Most products actually operate near, or at a 100 hour discharge rate (i.e. 0.01CA) and thus actual available battery capacity is slightly higher than the advertised rate.

The total available battery power is measured in watt-hour (Wh) or V*Ah. When comparing our total battery capacity with competitor's, please note that the battery capacity from a 12V system is not interchangeable with the battery capacity of a 24V system. However, the total battery power (i.e. watt-hours) is always comparable provided the correct system voltage is considered during calculation.



Lowest Price Guarantee

Worldwide Shipping

10 Year System Warranty

20 Year Panel Warranty

Lifetime Tech Support

9120 Centerlinks Commerce Drive • Unit 3 • Fort Myers • Florida • 33912 • USA • Telephone: 239-461-5522

MONDAY - FRIDAY 8:00AM - 8:00PM (US EASTERN TIME)

www.solarilluminations.com • sales@solarilluminations.com

*SUBJECT TO OUR TERMS & CONDITIONS, AND RETURNS POLICY





FL09

Solar Floodlight System With 4 Light Fixtures - Complete System

We stock several types of battery enclosures, ranging from various sizes and construction materials. The type of battery enclosure provided will depend on the size of the batteries required, and/or how the battery enclosure needs to be mounted. All battery enclosures are weather rated, designed for interior or exterior installation.

BE02



BE02 Battery Enclosure

- Galvanized steel construction.
- Fitted with 4 outlets, and one solar panel input.
- Hinged lockable lid (padlock not included).
- Dimensions: 13" x 9 7/8" x 8 7/8" (330mm x 250mm x 225mm)
- Dimensions including lid over-hang: 9 7/8" x 15 6/8" x 8 7/8" (250mm x 400mm x 225mm)

BE03



BE03 Battery Enclosure

- Galvanized steel construction.
- Fitted with 8 outlets, and one solar panel input.
- Hinged lockable lid (padlock not included).
- Dimensions: 18 1/8" x 14 3/8" x 11 3/16" (460mm x 365mm x 284mm)
- Dimensions including lid over-hang and side flanges: 21 1/4" x 15 3/8" x 11 3/16" (510mm x 390mm x 284mm)

BE05

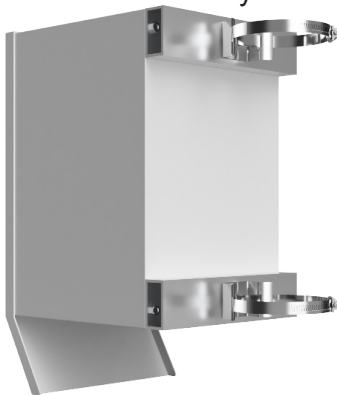


BE05 Battery Enclosure

- Galvanized steel construction.
- Hinged lockable door (padlock not included).
- Cable entry hole on the back of the enclosure.
- Dimensions: 20 1/2" x 13 5/8" x 33" (521mm x 345mm x 838mm)

Optional Battery Enclosure Mounting Hardware

If you need to mount your battery enclosure to a round post or pole, you can purchase our optional battery enclosure pole mount hardware kits.



SP13

The SP13 battery enclosure pole mount kit can be used to mount our BE02 or BE03 to a round pole or post. Pole diameter options vary between 2" to 8" diameter.



*SUBJECT TO OUR TERMS & CONDITIONS, AND RETURNS POLICY

Lowest Price*
Guarantee



Worldwide*
Shipping



10 Year*
System Warranty



20 Year*
Panel Warranty



Lifetime*
Tech Support



9120 Centerlinks Commerce Drive • Unit 3 • Fort Myers • Florida • 33912 • USA • Telephone: 239-461-5522

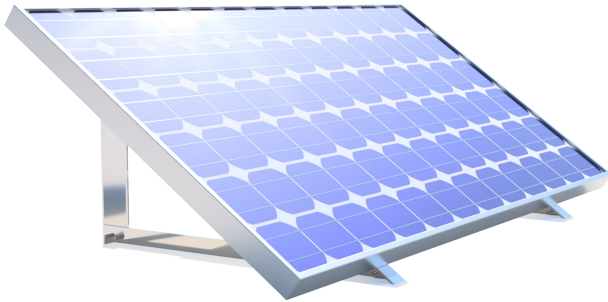
MONDAY - FRIDAY 8:00AM - 8:00PM (US EASTERN TIME)

www.solarilluminations.com • sales@solarilluminations.com

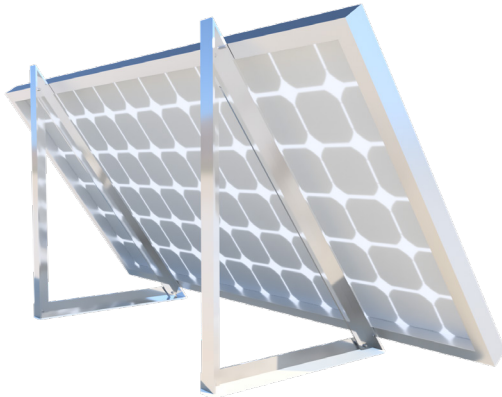


FL09

Solar Floodlight System With 4 Light Fixtures - Complete System



Each solar panel is supplied with a pair of metal mounting triangles. These triangles allow the installer to mount the solar panel at an appropriate angle to a solid vertical or horizontal surface (such as a wall or concrete pad).



The panels can be installed in numerous ways, but note that the solar must be mounted at an appropriate angle (15° plus site latitude), face due south for the northern hemisphere and north for the southern hemisphere, and be in clear view of the sun (with no shading).

If any of these requirements are not possible, please notify us prior to ordering so we can calculate solar panel sizing options.

Optional Solar Panel Mounting Hardware

Below are solar panel pole mount options that can be purchased as an optional extra.

SP11

Can accommodate panels up to 39" wide



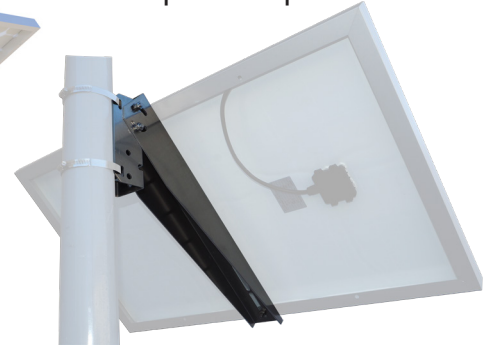
SP12

Can accommodate one or two panels, up to 39" wide each.



SP04 / SP08

SP04 can accommodate panels up to 20" wide. SP08 can accommodate panels up to 26" wide.



Lowest Price*
Guarantee ✓

Worldwide*
Shipping ✓

10 Year*
System Warranty ✓

20 Year*
Panel Warranty ✓

Lifetime*
Tech Support ✓

9120 Centerlinks Commerce Drive • Unit 3 • Fort Myers • Florida • 33912 • USA • Telephone: 239-461-5522

MONDAY - FRIDAY 8:00AM - 8:00PM (US EASTERN TIME)

www.solarilluminations.com • sales@solarilluminations.com

*SUBJECT TO OUR TERMS & CONDITIONS, AND RETURNS POLICY