



## XP08

**Solar LED String Light System  
(Christmas / Holiday / Accent Lighting)**



**Professional, commercial grade, solar LED string light system designed, engineered, manufactured and supplied by Solar Illuminations. It's the only custom lighting system of its kind in the world.**



Supplied as a complete system, this solar LED string light system is designed and built to order. Perfect for commercial applications or where a high-end, professional solar powered lighting system is required. It's available with a choice of LED lights, color temperature, string length and nightly illumination time. Choose from automatic dusk to dawn (e.g up to 16 hours), or a single timed mode (on at dusk for x hours then off, or a dual timed mode (on at dusk for x hours, turn off, then turn back on again for x hours before dawn. Ideal for temporary, semi-permanent, or permanent applications.



**Worldwide**  
Shipping



**Lowest Price**  
Guarantee



**10 Year**  
System Warranty



**20 Year**  
Panel Warranty



**Lifetime**  
Tech Support



9120 Centerlinks Commerce Drive • Unit 3 • Fort Myers • Florida • 33912 • USA • Telephone: 239-461-5522

MONDAY - FRIDAY 8.00AM - 8.00PM (US EASTERN TIME)

[www.solarilluminations.com](http://www.solarilluminations.com) • [sales@solarilluminations.com](mailto:sales@solarilluminations.com)

\*SUBJECT TO OUR TERMS & CONDITIONS, AND RETURNS POLICY



# XP08

Solar LED String Light System  
(Christmas / Holiday / Accent Lighting)

## Solar Makes Sense

Using a solar lighting system is often **cheaper than trenching** cables to remote sites or through parking lots, under roads and sidewalks.



**No monthly bills** for electric usage, meter fees, or taxes.

**Federal and local incentives** may be available to offset the cost of the system. View our website for current incentives.



**Renewable energy.** Use the sun's unlimited power as a clean source of renewable energy.

**Green Image.** Let people know your company or organization is doing its part in reducing its reliance on unclean energy.



## Purchase with Confidence



Established in 2002 with offices and warehouse located in Fort Myers, Florida where we store, assemble, ship, and support our products.



We stand behind our systems with a 20 year limited warranty on the solar panels, and a 10 year limited warranty on the system.



Our superior customer service and support is proven with our A+ rating with the Better Business Bureau.



Technical support is available for life! We'll be here to assist you with support and troubleshooting if the need arises.

Worldwide Shipping

Lowest Price Guarantee

10 Year System Warranty

20 Year Panel Warranty

Lifetime Tech Support



9120 Centerlinks Commerce Drive • Unit 3 • Fort Myers • Florida • 33912 • USA • Telephone: 239-461-5522

MONDAY - FRIDAY 8.00AM - 8.00PM (US EASTERN TIME)

[www.solarilluminations.com](http://www.solarilluminations.com) • [sales@solarilluminations.com](mailto:sales@solarilluminations.com)

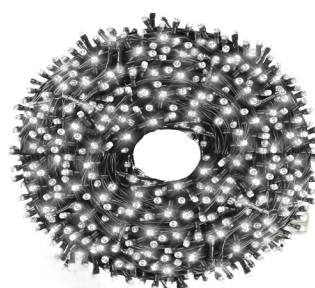
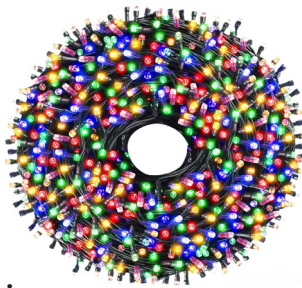
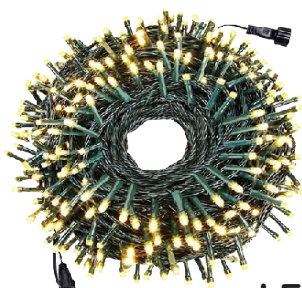
\*SUBJECT TO OUR TERMS & CONDITIONS, AND RETURNS POLICY





# XP08

## Solar LED String Light System (Christmas / Holiday / Accent Lighting)



### LED Light String

- The string is approximately 300' long (90m).
- Two strings can be connected together to create one.
- Up to 8 No. strings can be connected to one system.
- Each string contains 1,000 LEDs.
- Choice of warm white (3,000k) or daylight white (5,000k).
- RGB (multi-color) LEDs are available by special order.
- LEDs are steady-on.
- Flashing, pulsing, twinkling options by special order.
- Each LED string is about 3W LED power.
- Typically up to 20 years LED lifespan (approx. 100,000 hrs).
- No bulb changes required.
- Approx. 18' (5m) of pre-plugged wiring (with no LEDs) is added to the string for connection to the battery enclosure (plug & play).
- Safe, 24V DC, low voltage.
- Simply double-up or triple-up to reduce the cord length.



**Worldwide**  
Shipping



**Lowest Price**  
Guarantee



**10 Year**  
System Warranty



**20 Year**  
Panel Warranty



**Lifetime**  
Tech Support



9120 Centerlinks Commerce Drive • Unit 3 • Fort Myers • Florida • 33912 • USA • Telephone: 239-461-5522

MONDAY - FRIDAY 8.00AM - 8.00PM (US EASTERN TIME)

[www.solarilluminations.com](http://www.solarilluminations.com) • [sales@solarilluminations.com](mailto:sales@solarilluminations.com)

\*SUBJECT TO OUR TERMS & CONDITIONS, AND RETURNS POLICY



# XP08

## Solar LED String Light System (Christmas / Holiday / Accent Lighting)



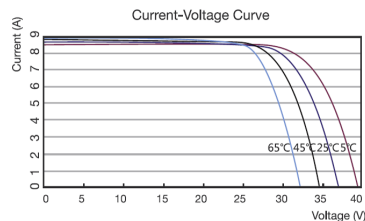
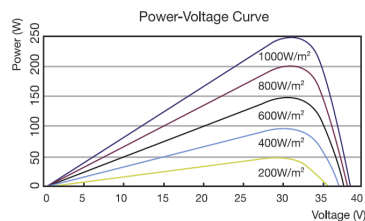
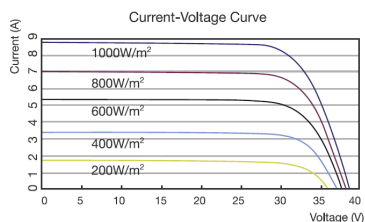
### Solar Panel

Systems are supplied with high quality monocrystalline or polycrystalline solar panels with the highest performance and efficiency. They are designed to endure the harshest environments, and are guaranteed to provide power for well over 20 years. Typically manufactured in the USA, Canada, or Germany. The solar panel power is subject to the total LED power, installation site location, and the required nightly illumination time. Please consult with our engineers for specific details and solar power recommendations.

#### Photovoltaic Module

- Highly efficient monocrystalline or polycrystalline solar panel with aluminum frame, anti-aging, and encapsulated membrane.
- Anti-reflective and anti-soiling surface that reduces power losses from dirt and dust.
- Certified to withstand high wind loads (340PSI) and snow loads (780PSI); and resistance to high salt and ammonia.
- Manufactured to international standards, verified and certified by independent testing laboratories. (UL, ETL, IEC, MCS, & TUV)
- Assembled to strict quality control standards; international standards ISO 9001 and ISO 14001.
- Range of solar panel power available from 45W to +500W.
- The solar panel power is subject to LED consumption, installation location, and illumination period. Please consult our engineers for specific solar power requirements.
- Solar panels can be supplied in a single or dual format.
- Typical solar panel life is over 30 years, subject to environmental factors.
- 65W panel dimensions: 34.25" x 20.13" x 1.5"
- 90W panel dimensions: 32.35" x 26.22" x 1.5"
- 100W panel dimensions: 40.25" x 26.25" x 1.5"
- 120W panel dimensions: 47.87" x 26.43" x 1.5"
- 170W panel dimensions: 44" x 38.7" x 1.5" (or may be supplied as two 90W panels).
- 275W panel dimensions: 64.38" x 39" x 1.5"
- 340W panel consists of two 170W panels.

#### MC4 Connector



Worldwide Shipping

Lowest Price Guarantee

10 Year System Warranty

20 Year Panel Warranty

Lifetime Tech Support

9120 Centerlinks Commerce Drive • Unit 3 • Fort Myers • Florida • 33912 • USA • Telephone: 239-461-5522

MONDAY - FRIDAY 8.00AM - 8.00PM (US EASTERN TIME)

www.solarilluminations.com • sales@solarilluminations.com

\*SUBJECT TO OUR TERMS & CONDITIONS, AND RETURNS POLICY





# XP08

## Solar LED String Light System (Christmas / Holiday / Accent Lighting)



"EastPenn batteries are engineered and tested to provide reliable, long-lasting power for Photovoltaic (PV) and renewable energy applications where frequent deep cycles are required and minimum maintenance is desirable."

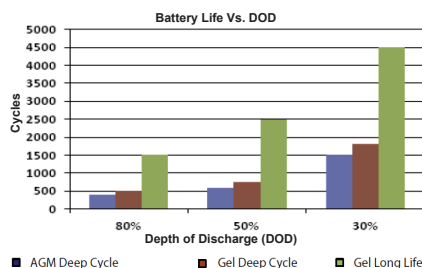
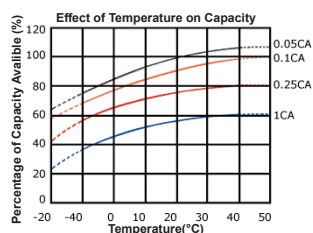


Made in the USA



### Battery

- Manufactured by: East Penn Manufacturing Co. Inc.
- 100% made in the USA.
- System supplied standard with two 12 Volt batteries. Batteries are wired in series to make a 24 Volt system.
- Available battery capacities range from 12Ah to 245Ah (per battery).
- Choice of two battery types: Absorbed Glass Mat (AGM) or Gel Cell.
- Please consult our engineers for specific battery capacity requirements.
- Classified as Non-spillable (defined by DOT, ICAO and IATA), NonHAZMAT, and valve regulate.
- Conforms to ISO9001, ISO/TS 16949, and ISO14001 standards.
- Typical battery life is approximately 5 to 7 years, subject to environmental factors.



### VRLA Technology

VRLA batteries are maintenance free for life. VRLA stands for Valve Regulated Lead Acid, which means the batteries are sealed. Gas will only escape through the safety valves in the case of overcharging or cell failure.

AGM and Gel batteries have exceptional discharge recovery, even after deep or prolonged discharge. However, it should be noted that repetitive deep discharge and prolonged deep discharge have a negative influence on the service life of all lead acid batteries.

Gel batteries in general have a longer service life and better cycle capacity than AGM batteries.

Please Note: The rated capacity of our AGM or gel deep cycle batteries refer to 20 hour discharge rate (i.e. 0.05CA). Most products actually operate near, or at a 100 hour discharge rate (i.e. 0.01CA) and thus actual available battery capacity is slightly higher than the advertised rate.

The total available battery power is measured in watt-hour (Wh) or V\*Ah. When comparing our total battery capacity with competitor's, please note that the battery capacity from a 12V system is not interchangeable with the battery capacity of a 24V system. However, the total battery power (i.e. watt-hours) is always comparable provided the correct system voltage is considered during calculation.



Worldwide  
Shipping

Lowest Price  
Guarantee

10 Year  
System Warranty

20 Year  
Panel Warranty

Lifetime  
Tech Support

9120 Centerlinks Commerce Drive • Unit 3 • Fort Myers • Florida • 33912 • USA • Telephone: 239-461-5522

MONDAY - FRIDAY 8.00AM - 8.00PM (US EASTERN TIME)

www.solarilluminations.com • sales@solarilluminations.com

\*SUBJECT TO OUR TERMS & CONDITIONS, AND RETURNS POLICY



Supplied standard with the most advanced and sophisticated MPPT charge controller technology. Allowing for full system programmability and light control; including active dimming and intelligent battery management. MPPT technology increases power generation by up to 30% during inclement periods, and intelligent battery management provides extended battery life and extra protection against excessive discharge.

- The MPPT controller will improve energy harvest by up to 30% compared to PWM charge controllers. Especially in the case of cold cloudy winter weather, when light intensity is changing continuously.
- Offers full programmability of load output: dusk to dawn, multi-timed mode, and integrated dimming (all standard features).
- Intelligent battery management software is used to protect the battery from being excessively discharged. The controller will monitor the state of charge on the battery, and if needed, day by day slightly increase the load disconnect level (i. e. disconnect the load earlier) until the harvested solar energy is sufficient to recharge the battery to nearly the full 100% at least once a week. Allowing for the longest life possible from the batteries.
- Controller size and ratings are subject to solar panel and battery specifications.
- \*Supports real time data monitoring, 30 day performance history, and user programmability from Apple or Android smartphones, tablets, etc. Use of this feature requires the optional MPPT Bluetooth Dongle.

The image shows a white iPhone with the 'Discovery' app open. The app's status bar at the top shows 'vodafone NL', '09:55', and '94%' battery. The app title 'Discovery' is in blue. Below it, an orange header bar contains a blue square icon with a white 'B' and the text 'BlueSolar Charger MPPT 75/15'. The main content area has a light gray background and displays the following information:

- Panel power**: 54 W (with a sun icon)
- Battery**: 13.78 V 3.7 A (with a lightning bolt icon)
- Charger state**: Float (with a battery icon)
- Load state**: On (with a light bulb icon)

A black USB cable is plugged into the bottom of the iPhone. The cable is coiled and ends in a small black module labeled 'Bluetooth Smart module' with a multi-colored logo. The module has three buttons: 'Pair BT', 'On/Off', and 'Clear PIN'.

C E

SUBJECT TO OUR TERMS &amp; CONDITIONS AND RETURNS POLICY

It also can be adjusted earlier or later by X number of hours.

**Lifetime\***  
Tech Support 

DAT001/1125V1.2



# XP08

## Solar LED String Light System (Christmas / Holiday / Accent Lighting)

We stock several types of battery enclosures, ranging from various sizes and construction materials. The type of battery enclosure provided will depend on the size of the batteries required, and/or how the battery enclosure needs to be mounted. All battery enclosures are weather rated, designed for interior or exterior installation.

BE01



- BE01 Battery Enclosure
- Plastic construction.
- Supplied with outlets or cable glands dependant on system requirements.
- Hinged lockable lid (padlock not included).
- Dimensions: 12 3/16" x 9" x 6 1/2" (310mm x 225mm x 165mm)

BE02



- BE02 Battery Enclosure
- Galvanized steel construction.
- Fitted with 4 outlets, and one solar panel input.
- Hinged lockable lid (padlock not included).
- Dimensions: 13" x 9 7/8" x 8 7/8" (330mm x 250mm x 225mm)
- Dimensions including lid over-hang: 9 7/8" x 15 6/8" x 8 7/8" (250mm x 400mm x 225mm)

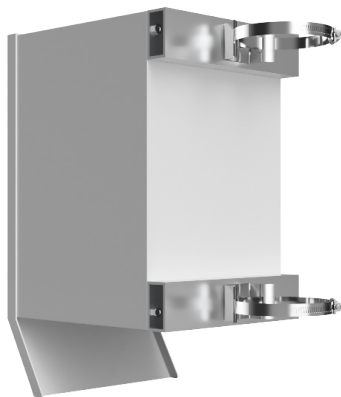
BE03



- BE03 Battery Enclosure
- Galvanized steel construction.
- Fitted with 8 outlets, and one solar panel input.
- Hinged lockable lid (padlock not included).
- Dimensions: 18 1/8" x 14 3/8" x 11 3/16" (460mm x 365mm x 284mm)
- Dimensions including lid over-hang and side flanges: 21 1/4" x 15 3/8" x 11 3/16" (510mm x 390mm x 284mm)

### Optional Battery Enclosure Mounting Hardware

If you need to mount your battery enclosure to a round post or pole, you can purchase our optional battery enclosure pole mount hardware kits.



SP13

The SP13 battery enclosure pole mount kit can be used to mount our BE01, BE02, or BE03 to a round pole or post. Pole diameter options vary between 2" to 8" diameter.



Worldwide  
Shipping

Lowest Price  
Guarantee

10 Year  
System Warranty

20 Year  
Panel Warranty

Lifetime  
Tech Support

9120 Centerlinks Commerce Drive • Unit 3 • Fort Myers • Florida • 33912 • USA • Telephone: 239-461-5522

MONDAY - FRIDAY 8.00AM - 8.00PM (US EASTERN TIME)

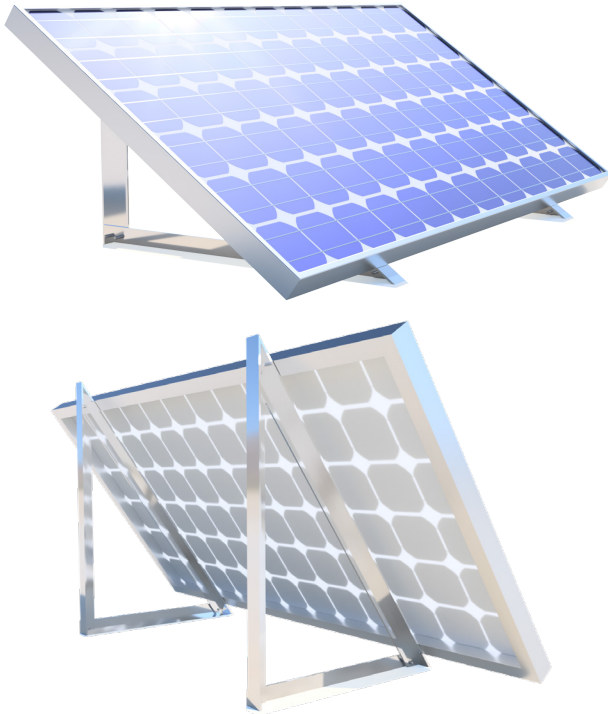
[www.solarilluminations.com](http://www.solarilluminations.com) • [sales@solarilluminations.com](mailto:sales@solarilluminations.com)

\*SUBJECT TO OUR TERMS & CONDITIONS, AND RETURNS POLICY



## XP08

### Solar LED String Light System (Christmas / Holiday / Accent Lighting)



Each solar panel is supplied with a pair of metal mounting triangles. These triangles allow the installer to mount the solar panel at an appropriate angle to a solid vertical or horizontal surface (such as a wall or concrete pad).

The panels can be installed in numerous ways, but note that the solar must be mounted at an appropriate angle ( $15^\circ$  plus site latitude), face due south for the northern hemisphere and north for the southern hemisphere, and be in clear view of the sun (with no shading).

If any of these requirements are not possible, please notify us prior to ordering so we can calculate solar panel sizing options.

### Optional Solar Panel Mounting Hardware

Below are solar panel pole mount options that can be purchased as an optional extra.

#### SP11

Can accommodate panels up to 39" wide



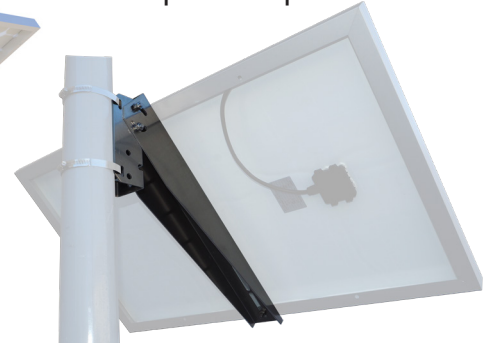
#### SP12

Can accommodate one or two panels, up to 39" wide each.



#### SP04 / SP08

SP04 can accommodate panels up to 20" wide. SP08 can accommodate panels up to 26" wide.



Worldwide\*  
Shipping

Lowest Price\*  
Guarantee

10 Year\*  
System Warranty

20 Year\*  
Panel Warranty

Lifetime\*  
Tech Support

9120 Centerlinks Commerce Drive • Unit 3 • Fort Myers • Florida • 33912 • USA • Telephone: 239-461-5522

MONDAY - FRIDAY 8.00AM - 8.00PM (US EASTERN TIME)

[www.solarilluminations.com](http://www.solarilluminations.com) • [sales@solarilluminations.com](mailto:sales@solarilluminations.com)

\*SUBJECT TO OUR TERMS & CONDITIONS, AND RETURNS POLICY