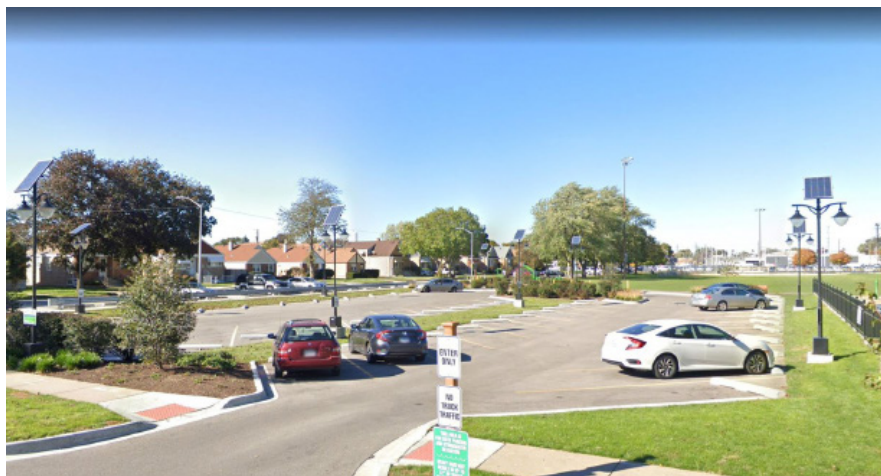




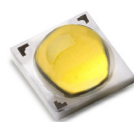
SL22

SOLAR DOUBLE LAMP STREET / PARKING LOT LIGHT

15W, 12W, 10W LED Lamps & Complete Solar Sytem



- Sold as a complete lighting system with all components necessary for a typical installation.
- Illumination period can be designed subject to project requirements.
- Typical luminaire options are 15, 12, or 10 watts.
- Light output from 1,850 to 2,775 lumens.
- Luminaire power is adjustable between 10W and 15W.
- Solar panel power is calculated based on luminaire power, installation location, and desired performance.
- Standard pole height is 15' (4.5m). Total height is 17' when mounted on battery enclosure.



Philips LUMILEDS® LUXEON T
Up to 185 lm/W efficiency.



Modular design allows for longer
life and greater efficiency.



Lowest Price*
Guarantee



Worldwide*
Shipping



10 Year*
System Warranty



20 Year*
Panel Warranty



Lifetime*
Tech Support



5611 Halifax Avenue • Fort Myers • FL • 33912 • USA • Phone: 239-461-5522 • Fax: 239-337-7887

MONDAY - FRIDAY 8:00AM - 8:00PM (US EASTERN TIME)

www.solarilluminations.com • sales@solarilluminations.com

*SUBJECT TO OUR TERMS & CONDITIONS, AND RETURNS POLICY



SL22 SOLAR DOUBLE LAMP STREET / PARKING LOT LIGHT 15W, 12W, 10W LED Lamps & Complete Solar Sytem

Solar Makes Sense

Using a solar lighting system is often **cheaper than trenching** cables to remote sites or through parking lots, under roads and sidewalks.



No monthly bills for electric usage, meter fees, or taxes.

Federal and local incentives may be available to offset the cost of the system. View our website for current incentives.



Renewable energy. Use the sun's unlimited power as a clean source of renewable energy.

Green Image. Let people know your company or organization is doing its part in reducing its reliance on unclean energy.



Purchase with Confidence



Established in 2002 with offices and warehouse located in Fort Myers, Florida where we store, assemble, ship, and support our products.



We stand behind our systems with a 20 year limited warranty on the solar panels, and a 10 year limited warranty on the system.



Our superior customer service and support is proven with our A+ rating with the Better Business Bureau.



Technical support is available for life! We'll be here to assist you with support and troubleshooting if the need arises.

Lowest Price*
Guarantee

Worldwide*
Shipping

10 Year*
System Warranty

20 Year*
Panel Warranty

Lifetime*
Tech Support

5611 Halifax Avenue • Fort Myers • FL • 33912 • USA • Phone: 239-461-5522 • Fax: 239-337-7887

MONDAY - FRIDAY 8:00AM - 8:00PM (US EASTERN TIME)

www.solarilluminations.com • sales@solarilluminations.com

*SUBJECT TO OUR TERMS & CONDITIONS, AND RETURNS POLICY



SL22

SOLAR DOUBLE LAMP STREET / PARKING LOT LIGHT

15W, 12W, 10W LED Lamps & Complete Solar Sytem



PHILIPS
LUMILEDS



LUXEON
never before possible

DARK SKY
COMPLIANT LIGHTING
Full Cutoff Light Fixture



Philips LUMILEDS LUXEON T LED emitters produce up to 185 lumens per Watt efficiency and have a life span greater than 100,000 hours of operation.

15 Watt LED Lamp - Philips LUXEON T

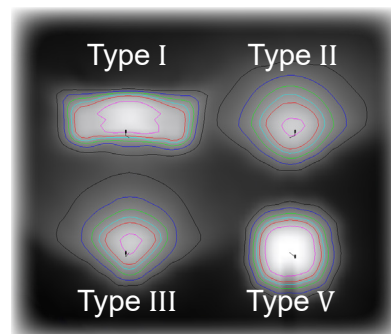
Provides approx. 2,775 lumens

12 Watt LED Lamp - Philips LUXEON T

Provides approx. 2,220 lumens

10 Watt LED Lamp - Philips LUXEON T

Provides approx. 1,850 lumens



Each lamp is supplied in one of four different lighting distributions: (Type I, II, III, or V).

The standard power ranges offered can be adjusted using the optional dimming feature of the charge controller. For example 15W lamp can be permanently reduced to 13W, or it can be reduced for a set period of time each evening. The illumination schedule and dimming feature can be customized to work for many different lighting scenarios.



- Configured with one LED module containing 14 Philips LUMILEDS® LUXEON T LEDs.
- LED color is white (5000K). Warm white (3500K), or Amber (Sea Turtle Lighting) is available by special order.
- LED life expectancy is typically up to 100,000 hours or equal to about 22 years.
- LEDs are powered by Mean Well drivers, with integrated PWM dimming control and multi-driver redundancy.

Lowest Price*
Guarantee



Worldwide*
Shipping



10 Year*
System Warranty



20 Year*
Panel Warranty



Lifetime*
Tech Support



5611 Halifax Avenue • Fort Myers • FL • 33912 • USA • Phone: 239-461-5522 • Fax: 239-337-7887

MONDAY - FRIDAY 8:00AM - 8:00PM (US EASTERN TIME)

www.solarillumination.com • sales@solarillumination.com

*SUBJECT TO OUR TERMS & CONDITIONS, AND RETURNS POLICY



SL22

SOLAR DOUBLE LAMP STREET / PARKING LOT LIGHT

15W, 12W, 10W LED Lamps & Complete Solar Sytem



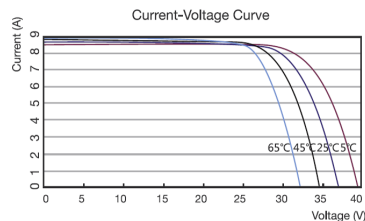
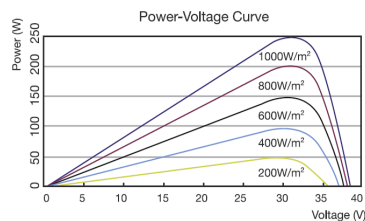
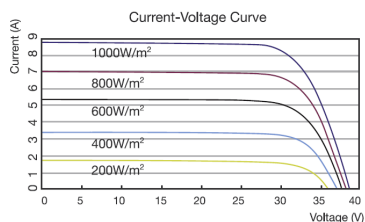
20
YEAR
GUARANTEE

Solar Panel

Systems are supplied with high quality monocrystalline or polycrystalline solar panels with the highest performance and efficiency. They are designed to endure the harshest environments, and are guaranteed to provide power for well over 20 years. Typically manufactured in the USA, Canada, or Germany. The solar panel power is subject to LED consumption, installation location, and illumination period. Please consult with our engineers for specific solar power recommendations.

Photovoltaic Module

- Highly efficient monocrystalline or polycrystalline solar panel with aluminum frame, anti-aging, and encapsulated membrane.
- Anti-reflective and anti-soiling surface that reduces power losses from dirt and dust.
- Certified to withstand high wind loads (340PSI) and snow loads (780PSI); and resistance to high salt and ammonia.
- Manufactured to international standards.
- Assembled to strict quality control standards; international standards ISO 9001 and ISO 14001.
- Range of solar panel power available from 45W to 180W.
- The solar panel power is subject to LED consumption, installation location, and illumination period. Please consult our engineers for specific solar power requirements.
- Solar panels can be supplied in a single or dual format (2 x 70W = 140W, 2 x 100W = 200W etc.)
- Typical solar panel life is over 30 years, subject to environmental factors.



*Third party tested components may be available by request.



*SUBJECT TO OUR TERMS & CONDITIONS, AND RETURNS POLICY

Lowest Price*
Guarantee

Worldwide*
Shipping

10 Year*
System Warranty

20 Year*
Panel Warranty

Lifetime*
Tech Support

5611 Halifax Avenue • Fort Myers • FL • 33912 • USA • Phone: 239-461-5522 • Fax: 239-337-7887

MONDAY - FRIDAY 8:00AM - 8:00PM (US EASTERN TIME)

www.solarilluminations.com • sales@solarilluminations.com



SL22

SOLAR DOUBLE LAMP STREET / PARKING LOT LIGHT

15W, 12W, 10W LED Lamps & Complete Solar Sytem



"EastPenn batteries are engineered and tested to provide reliable, long-lasting power for Photovoltaic (PV) and renewable energy applications where frequent deep cycles are required and minimum maintenance is desirable."

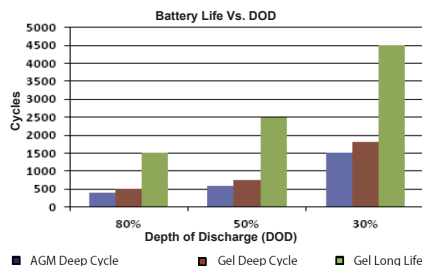
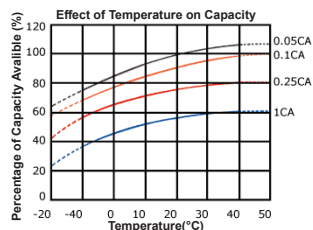


Made in the USA



Battery

- Manufactured by: East Penn Manufacturing Co. Inc.
- 100% made in the USA.
- System supplied standard with two 12 Volt batteries. Batteries are wired in series to make a 24 Volt system.
- Available battery capacities range from 32Ah to 55Ah (per battery).
- Choice of two battery types: Absorbed Glass Mat (AGM) or Gel Cell.
- Please consult our engineers for specific battery capacity requirements.
- Classified as Non-spillable (defined by DOT, ICAO and IATA), NonHAZMAT, and valve regulate.
- Conforms to ISO9001, ISO/TS 16949, and ISO14001 standards.
- Typical battery life is approximately 5 to 7 years, subject to environmental factors.



VRLA Technology

VRLA batteries are maintenance free for life. VRLA stands for Valve Regulated Lead Acid, which means the batteries are sealed. Gas will only escape through the safety valves in the case of overcharging or cell failure.

AGM and Gel batteries have exceptional discharge recovery, even after deep or prolonged discharge. However, it should be noted that repetitive deep discharge and prolonged deep discharge have a negative influence on the service life of all lead acid batteries.

Gel batteries in general have a longer service life and better cycle capacity than AGM batteries.

Please Note: The rated capacity of our AGM or gel deep cycle batteries refer to 20 hour discharge rate (i.e. 0.05CA). Most products actually operate near, or at a 100 hour discharge rate (i.e. 0.01CA) and thus actual available battery capacity is slightly higher than the advertised rate.

The total available battery power is measured in watt-hour (Wh) or V*Ah. When comparing our total battery capacity with competitor's, please note that the battery capacity from a 12V system is not interchangeable with the battery capacity of a 24V system. However, the total battery power (i.e. watt-hours) is always comparable provided the correct system voltage is considered during calculation.



Lowest Price*
Guarantee

Worldwide*
Shipping

10 Year*
System Warranty

20 Year*
Panel Warranty

Lifetime*
Tech Support

5611 Halifax Avenue • Fort Myers • FL • 33912 • USA • Phone: 239-461-5522 • Fax: 239-337-7887

MONDAY - FRIDAY 8:00AM - 8:00PM (US EASTERN TIME)

www.solarilluminations.com • sales@solarilluminations.com



Supplied standard with the most advanced and sophisticated MPPT charge controller technology. Allowing for full system programmability and light control; including active dimming and intelligent battery management. MPPT technology increases power generation by up to 30% during inclement periods, and intelligent battery management provides extended battery life and extra protection against excessive discharge.

- The MPPT controller will improve energy harvest by up to 30% compared to PWM charge controllers. Especially in the case of cold cloudy winter weather, when light intensity is changing continuously.
- Offers full programmability of load output: dusk to dawn, multi-timed mode, and integrated dimming (all standard features).
- Intelligent battery management software is used to protect the battery from being excessively discharged. The controller will monitor the state of charge on the battery, and if needed, day by day slightly increase the load disconnect level (i. e. disconnect the load earlier) until the harvested solar energy is sufficient to recharge the battery to nearly the full 100% at least once a week. Allowing for the longest life possible from the batteries.
- Controller size and ratings are subject to solar panel and battery specifications.
- *Supports real time data monitoring, 30 day performance history, and user programmability from Apple or Android smartphones, tablets, etc. Use of this feature requires the optional MPPT Bluetooth Dongle.

CE

SUBJECT TO OUR TERMS & CONDITIONS AND RETIRNS POLICY

Figure 1 illustrates seven scheduling scenarios for a 24-hour day, showing power consumption (Maximum Power) and off periods (Off) across different times of the day. The scenarios are:

- Dusk Till Dawn:** Maximum Power from 18:00 to 06:00.
- Single Time Operation:** Maximum Power from 08:00 to 12:00, Off from 12:00 to 23:00. Red 'X' marks at 08:00 and 12:00.
- Single Time Operation:** Off from 00:00 to 06:00, Maximum Power from 06:00 to 23:00. Red 'X' marks at 06:00 and 12:00.
- Dual Time Operation:** Maximum Power from 08:00 to 12:00 and 18:00 to 22:00, Off from 12:00 to 18:00. Red 'X' marks at 08:00, 12:00, and 18:00.
- Single Time Operation w/ dimming:** Maximum Power from 08:00 to 12:00 and 18:00 to 22:00, with dimming (lighter yellow) from 18:00 to 20:00. Red 'X' marks at 08:00, 12:00, and 20:00.
- Dual Time Operation w/ Dimming:** Maximum Power from 08:00 to 12:00 and 18:00 to 22:00, with dimming from 12:00 to 18:00 and 20:00 to 22:00. Red 'X' marks at 08:00, 12:00, and 20:00.
- Multiple Dimming Operation:** Maximum Power from 08:00 to 12:00 and 18:00 to 22:00, with dimming from 12:00 to 18:00 and 20:00 to 22:00. Red 'X' marks at 08:00, 12:00, and 20:00.

It also can be adjusted earlier or later by X number of hours.

Lowest Price*  **Worldwide***  **10 Year***  **20 Year***  **Lifetime*** 

MONDAY - FRIDAY 8:00AM - 8:00PM (US EASTERN TIME)

www.solarilluminations.com • sales@solarilluminations.com



SL22

SOLAR DOUBLE LAMP STREET / PARKING LOT LIGHT

15W, 12W, 10W LED Lamps & Complete Solar Sytem

Performance

Operating voltage is 24 volts. DC.

Power consumption is 15, 12, or 10 watts (subject to model selected).

Operating temperature -40 deg. C ~ +80 deg. C (-40 deg. F ~ 175 deg. F).

Intelligent battery management software to prevent over-charging and over-discharging.

Includes a minimum of three to five days of autonomy (battery back-up).

Several successive cloudy or overcast days typically will not affect illumination time.

Supplied solar panel power is based on installation location and system requirements.

Illumination period can be designed to meet specific requirements.



Hardware & Pole

Battery Enclosure

- Galvanized steel lockable battery enclosure will accommodate the rechargeable batteries and charge controller (padlock not included.)
- Light pole attaches to the top of the battery enclosure.
- Battery enclosure dimensions are approx. 14" x 14" 17" (35cm x 35cm x 43cm)
- Battery enclosure footprint is approx. 17" 3/4 x 17" 3/4 (45cm x 45cm)
- The enclosure has pre-drilled holes to enable secure installation to a concrete pad.
- Templates and anchor bolts are included.
- Black color finish. Custom colors available by special order.

Arm

- Painted galvanized steel arm mount the luminaires to the light pole.
- Can be attached in any direction and any height on the pole.
- Black color finish. Custom colors by special order only.

Pole

- Painted galvanized steel pole with square base plate.
- Pole features a decorative spiraled design.
- Includes a welded mounting plate for securing onto the battery enclosure.
- Pole height is 15'. Total height is approx. 17' when mounted on enclosure.
- Wind load rating is 110 MPH with a 1.3 gust factor.
- Black color finish. Custom colors by special order only.
- The location, wind factor, and ground conditions will affect the size of the foundation required.



Lowest Price*
Guarantee



Worldwide*
Shipping



10 Year*
System Warranty



20 Year*
Panel Warranty



Lifetime*
Tech Support



5611 Halifax Avenue • Fort Myers • FL • 33912 • USA • Phone: 239-461-5522 • Fax: 239-337-7887

MONDAY - FRIDAY 8:00AM - 8:00PM (US EASTERN TIME)

www.solarilluminations.com • sales@solarilluminations.com

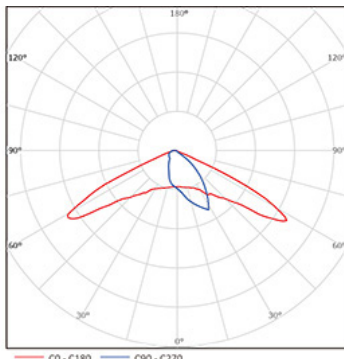
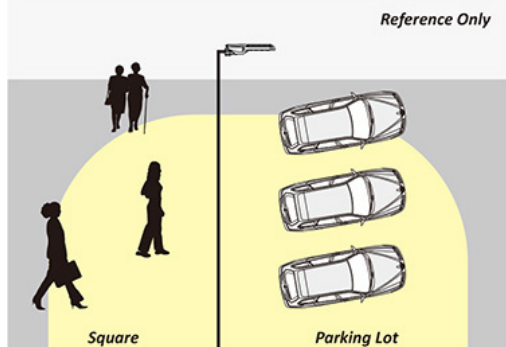
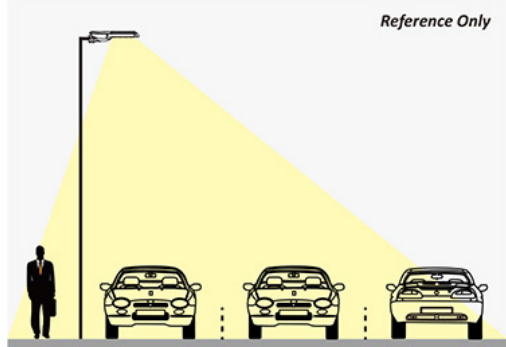
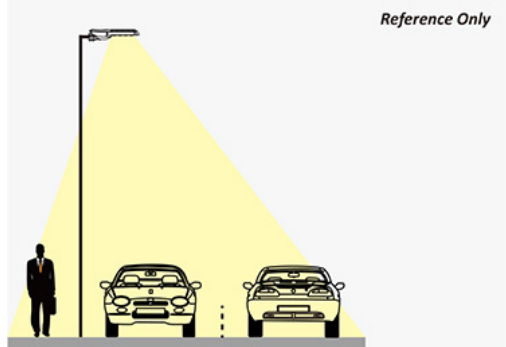
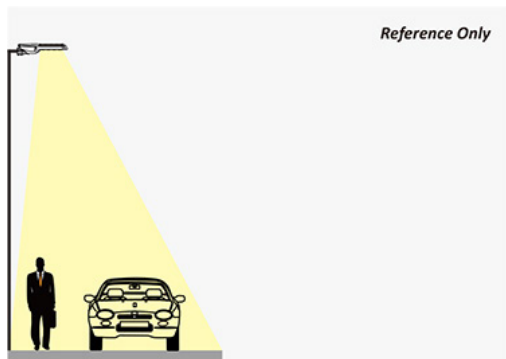
*SUBJECT TO OUR TERMS & CONDITIONS, AND RETURNS POLICY



SL22

SOLAR DOUBLE LAMP STREET / PARKING LOT LIGHT

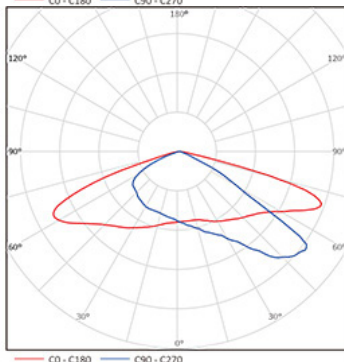
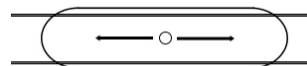
15W, 12W, 10W LED Lamps & Complete Solar Sytem



Type I

Applications:

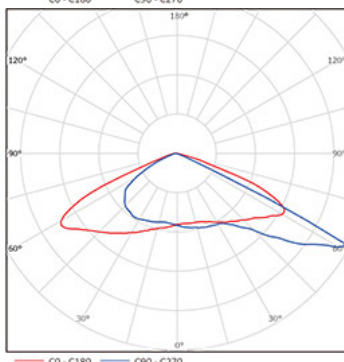
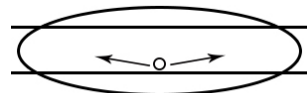
Narrow Roadways
Pathways/sidewalks
Single-track / One-Lane Roads



Type II

Applications:

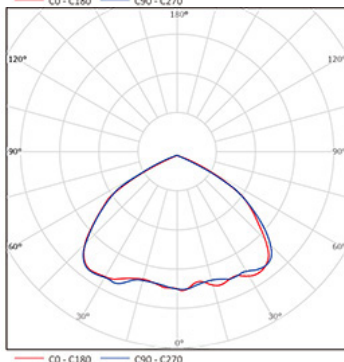
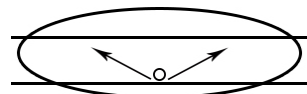
Urban Roadways
Pathways/sidewalks
Two-lane Expressways



Type III

Applications:

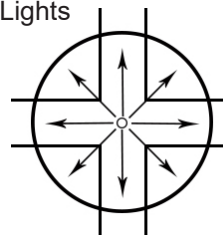
Highways
Parking Lots
Multi-lane Expressways



Type V

Applications:

Parking Lots
Area Lights



*SUBJECT TO OUR TERMS & CONDITIONS, AND RETURNS POLICY

Lowest Price*
Guarantee

Worldwide*
Shipping

10 Year*
System Warranty

20 Year*
Panel Warranty

Lifetime*
Tech Support

5611 Halifax Avenue • Fort Myers • FL • 33912 • USA • Phone: 239-461-5522 • Fax: 239-337-7887

MONDAY - FRIDAY 8:00AM - 8:00PM (US EASTERN TIME)

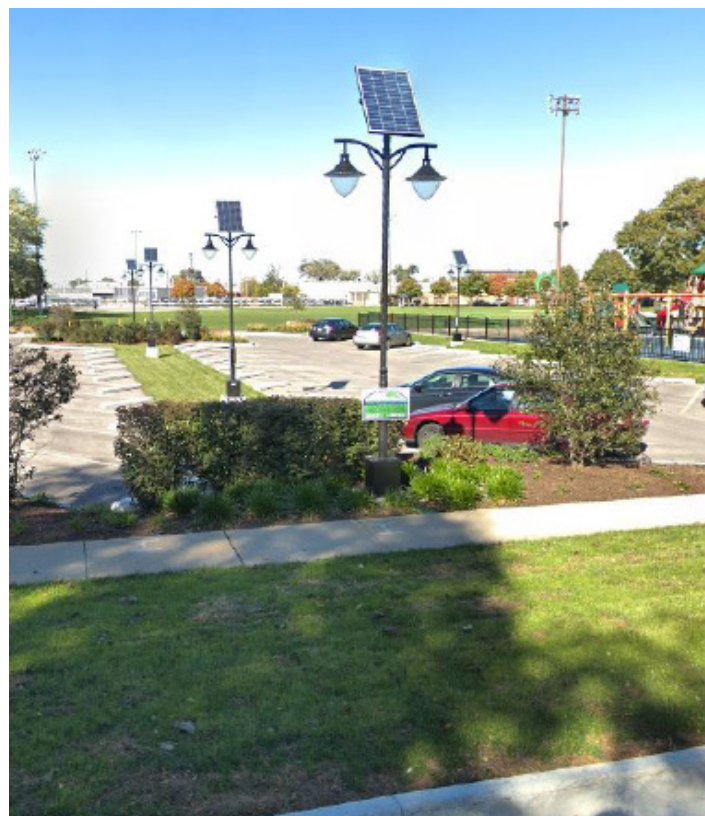
www.solarilluminations.com • sales@solarilluminations.com



SL22

SOLAR DOUBLE LAMP STREET / PARKING LOT LIGHT

15W, 12W, 10W LED Lamps & Complete Solar Sytem



*SUBJECT TO OUR TERMS & CONDITIONS, AND RETURNS POLICY

Lowest Price*
Guarantee

Worldwide*
Shipping

10 Year*
System Warranty

20 Year*
Panel Warranty

Lifetime*
Tech Support

5611 Halifax Avenue • Fort Myers • FL • 33912 • USA • Phone: 239-461-5522 • Fax: 239-337-7887

MONDAY - FRIDAY 8:00AM - 8:00PM (US EASTERN TIME)

www.solarilluminations.com • sales@solarilluminations.com