



SL22

SOLAR STREET / PARKING LOT / AREA LIGHT

Dual 10W~30W LED Lamps. Complete System With Pole



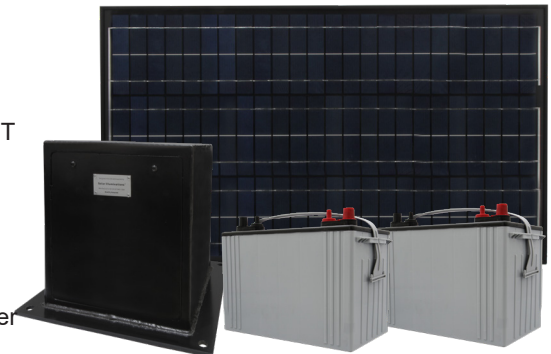
- Sold as a complete lighting system with all components necessary for a typical installation.
- This system can be designed, engineered, and pre-programmed to automatically operate from dusk to dawn all year round. Or it can be pre-programmed to operate on a single or dual timed mode instead. Dimming and motion detection are optionally available.
- Adjustable LED power between 10W to 30W. Typical options being a pair of 10W, 15W, or 20W lamps with Type II, III, or V distribution. Light output from 1,850 to 5,550 lumens. Choice of warm white (3,000k) or daylight white (5,500k). Other CCT options by special order.
- The solar panel size (wattage) and battery size (capacity) is based on the total LED power, geographic location of the site, and the hours or times of nightly operation.
- Standard pole height is approx. 15' (4.5M). Total height is approx. 17'(5.2M) when mounted onto its battery enclosure. Custom height options by special order.
- Ideal for small streets, parking lots, trails, parks, etc. A popular choice for developments, communities, and HOA applications.



Philips LUMILEDS® LUXEON T
Up to 185 lm/W efficiency.



Modular design allows for longer life and greater efficiency.



*SUBJECT TO OUR TERMS & CONDITIONS, AND RETURNS POLICY

Lowest Price* **Guarantee**

Worldwide* **Shipping**

10 Year* **System Warranty**

20 Year* **Panel Warranty**

Lifetime* **Tech Support**

9120 Centerlinks Commerce Drive • Unit 3 • Fort Myers • Florida • 33912 • USA • Telephone: 239-461-5522

MONDAY - FRIDAY 8:00AM - 8:00PM (US EASTERN TIME)

www.solarilluminations.com • sales@solarilluminations.com



SL22

SOLAR STREET / PARKING LOT / AREA LIGHT
Dual 10W~30W LED Lamps. Complete System With Pole

Solar Makes Sense

Using a solar lighting system is often **cheaper than trenching** cables to remote sites or through parking lots, under roads and sidewalks.



No monthly bills for electric usage, meter fees, or taxes.

Federal and local incentives may be available to offset the cost of the system. View our website for current incentives.



Renewable energy. Use the sun's unlimited power as a clean source of renewable energy.

Green Image. Let people know your company or organization is doing its part in reducing its reliance on unclean energy.



Purchase with Confidence



Established in 2002 with offices and warehouse located in Fort Myers, Florida where we store, assemble, ship, and support our products.



We stand behind our systems with a 20 year limited warranty on the solar panels, and a 10 year limited warranty on the system.



Our superior customer service and support is proven with our A+ rating with the Better Business Bureau.



Technical support is available for life! We'll be here to assist you with support and troubleshooting if the need arises.

Lowest Price* **Worldwide*** **Shipping** **10 Year*** **System Warranty** **20 Year*** **Panel Warranty** **Lifetime*** **Tech Support**

9120 Centerlinks Commerce Drive • Unit 3 • Fort Myers • Florida • 33912 • USA • Telephone: 239-461-5522

MONDAY - FRIDAY 8:00AM - 8:00PM (US EASTERN TIME)

www.solarilluminations.com • sales@solarilluminations.com

*SUBJECT TO OUR TERMS & CONDITIONS, AND RETURNS POLICY



SL22

SOLAR STREET / PARKING LOT / AREA LIGHT
Dual 10W~30W LED Lamps. Complete System With Pole



PHILIPS
LUMILEDS



LUXEON
never before possible

DARK SKY
COMPLIANT LIGHTING
Full Cutoff Light Fixture



Philips LUMILEDS LUXEON T LED emitters produce up to 185 lumens per Watt efficiency and have a life span greater than 100,000 hours of operation.

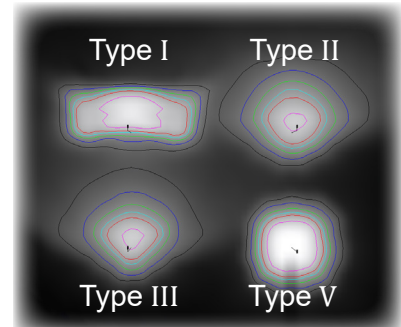
30 Watt LED Lamp - Philips LUMILEDS® LUXEON T
Provides up to approx. 5,550 lumens of light output.

25 Watt LED Lamp - Philips LUMILEDS® LUXEON T
Provides up to approx. 4,625 lumens of light output.

20 Watt LED Lamp - Philips LUMILEDS® LUXEON T
Provides up to approx. 3,700 lumens of light output.

15 Watt LED Lamp - Philips LUMILEDS® LUXEON T
Provides up to approx. 2,775 lumens of light output.

10 Watt LED Lamp - Philips LUMILEDS® LUXEON T
Provides up to approx. 1,850 lumens of light output.



Each lamp is supplied in one of four different lighting distributions: (Type I, II, III, or V).

The standard power ranges offered can be adjusted using the optional dimming feature of the charge controller. For example 30W lamp can be permanently reduced to 15W, or it can be reduced for a set period of time each evening. The illumination schedule and dimming feature can be customized to work for many different lighting scenarios.



- Each fixture is configured with one LED module containing 14 Philips LUMILEDS® LUXEON T LEDs.
- LEDs are dimmable to a required LED power of lumen output.
- Standard LED color is white (5,000k). Warm white (3,000~3,500k) and other CCT options are available by special order.
- Popular distribution types available (Type II, III, and V, etc.)
- LED life expectancy is typically up to 100,000 hours or equal to about 22 years.
- Satin black finish on fixture, pole, enclosure, and hardware.
- LEDs are powered by high quality drivers, with integrated PWM dimming control and multi-driver redundancy.

*SUBJECT TO OUR TERMS & CONDITIONS, AND RETURNS POLICY

Lowest Price* **Worldwide***
Guarantee Shipping

10 Year* **20 Year***
System Warranty Panel Warranty

Lifetime*
Tech Support

9120 Centerlinks Commerce Drive • Unit 3 • Fort Myers • Florida • 33912 • USA • Telephone: 239-461-5522
MONDAY - FRIDAY 8:00AM - 8:00PM (US EASTERN TIME)

www.solarilluminations.com • sales@solarilluminations.com



SL22

SOLAR STREET / PARKING LOT / AREA LIGHT

Dual 10W~30W LED Lamps. Complete System With Pole



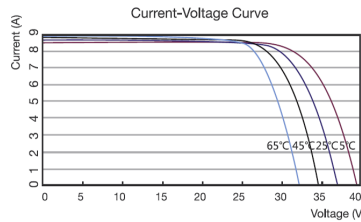
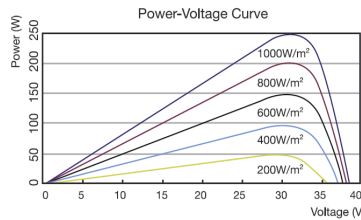
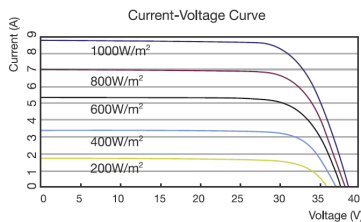
20
YEAR
GUARANTEE

Solar Panel

Systems are supplied with high quality monocrystalline or polycrystalline solar panels with the highest performance and efficiency. They are designed to endure the harshest environments, and are guaranteed to provide power for well over 20 years. Typically manufactured in the USA, Canada, or Germany. The solar panel power is subject to LED consumption, installation location, and illumination period. Please consult with our engineers for specific solar power recommendations.

Photovoltaic Module

- Highly efficient monocrystalline or polycrystalline solar panel with aluminum frame, anti-aging, and encapsulated membrane.
- Anti-reflective and anti-soiling surface that reduces power losses from dirt and dust.
- Certified to withstand high wind loads (340PSI) and snow loads (780PSI); and resistance to high salt and ammonia.
- Manufactured to international standards.
- Assembled to strict quality control standards; international standards ISO 9001 and ISO 14001.
- Range of solar panel power available from 45W to 180W.
- The solar panel power is subject to LED consumption, installation location, and illumination period. Please consult our engineers for specific solar power requirements.
- Solar panels can be supplied in a single or dual format (2 x 70W = 140W, 2 x 100W = 200W etc.)
- Typical solar panel life is over 30 years, subject to environmental factors.



*Third party tested components may be available by request.



*SUBJECT TO OUR TERMS & CONDITIONS, AND RETURNS POLICY

Lowest Price*
Guarantee

Worldwide*
Shipping

10 Year*
System Warranty

20 Year*
Panel Warranty

Lifetime*
Tech Support

9120 Centerlinks Commerce Drive • Unit 3 • Fort Myers • Florida • 33912 • USA • Telephone: 239-461-5522

MONDAY - FRIDAY 8:00AM - 8:00PM (US EASTERN TIME)

www.solarilluminations.com • sales@solarilluminations.com

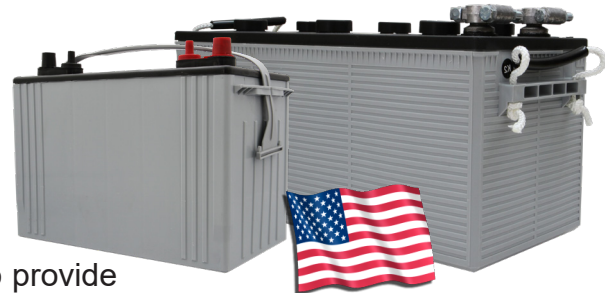


SL22

SOLAR STREET / PARKING LOT / AREA LIGHT
Dual 10W~30W LED Lamps. Complete System With Pole



“EastPenn batteries are engineered and tested to provide reliable, long-lasting power for Photovoltaic (PV) and renewable energy applications where frequent deep cycles are required and minimum maintenance is desirable.”



Made in the USA



Battery

- Manufactured by: East Penn Manufacturing Co. Inc.
- 100% made in the USA.
- System supplied standard with two 12 Volt batteries. Batteries are wired in series to make a 24 Volt system.
- Available battery capacities range from 32Ah to 55Ah (per battery).
- Choice of two battery types: Absorbed Glass Mat (AGM) or Gel Cell.
- Please consult our engineers for specific battery capacity requirements.
- Classified as Non-spillable (defined by DOT, ICAO and IATA), NonHAZMAT, and valve regulate.
- Conforms to ISO9001, ISO/TS 16949, and ISO14001 standards.
- Typical battery life is approximately 5 to 7 years, subject to environmental factors.

VRLA Technology

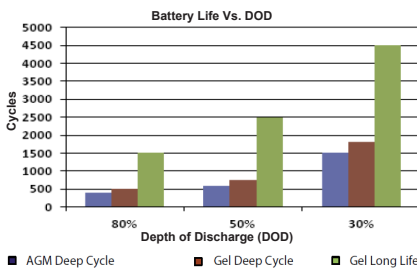
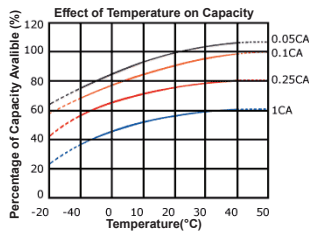
VRLA batteries are maintenance free for life. VRLA stands for Valve Regulated Lead Acid, which means the batteries are sealed. Gas will only escape through the safety valves in the case of overcharging or cell failure.

AGM and Gel batteries have exceptional discharge recovery, even after deep or prolonged discharge. However, it should be noted that repetitive deep discharge and prolonged deep discharge have a negative influence on the service life of all lead acid batteries.

Gel batteries in general have a longer service life and better cycle capacity than AGM batteries.

Please Note: The rated capacity of our AGM or gel deep cycle batteries refer to 20 hour discharge rate (i.e. 0.05CA). Most products actually operate near, or at a 100 hour discharge rate (i.e. 0.01CA) and thus actual available battery capacity is slightly higher than the advertised rate.

The total available battery power is measured in watt-hour (Wh) or V*Ah. When comparing our total battery capacity with competitor's, please note that the battery capacity from a 12V system is not interchangeable with the battery capacity of a 24V system. However, the total battery power (i.e. watt-hours) is always comparable provided the correct system voltage is considered during calculation.



Lowest Price Guarantee **Worldwide Shipping** **10 Year System Warranty** **20 Year Panel Warranty** **Lifetime Tech Support**

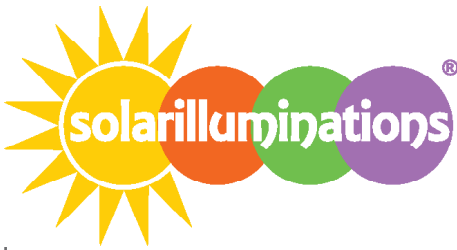
9120 Centerlinks Commerce Drive • Unit 3 • Fort Myers • Florida • 33912 • USA • Telephone: 239-461-5522

MONDAY - FRIDAY 8:00AM - 8:00PM (US EASTERN TIME)

www.solarilluminations.com • sales@solarilluminations.com

*SUBJECT TO OUR TERMS & CONDITIONS, AND RETURNS POLICY





SL22

SOLAR STREET / PARKING LOT / AREA LIGHT

Dual 10W~30W LED Lamps. Complete System With Pole

Performance

Operating voltage is 24 volts. DC.
Power consumption is 15, 12, or 10 watts (subject to model selected).
Operating temperature -40 deg. C ~ +80 deg. C (-40 deg. F ~ 175 deg. F).
Intelligent battery management software to prevent over-charging and over-discharging.
Includes a minimum of three to five days of autonomy (battery back-up).
Several successive cloudy or overcast days typically will not affect illumination time.
Supplied solar panel power is based on installation location and system requirements.
Illumination period can be designed to meet specific requirements.



Hardware & Pole

Battery Enclosure

- Galvanized steel lockable battery enclosure will accommodate the rechargeable batteries and charge controller (padlock not included.)
- Light pole attaches to the top of the battery enclosure.
- Battery enclosure dimensions are approx. 14" x 14" 17" (35cm x 35cm x 43cm)
- Battery enclosure footprint is approx. 17" 3/4 x 17" 3/4 (45cm x 45cm)
- The enclosure has pre-drilled holes to enable secure installation to a concrete pad.
- Templates and anchor bolts are included.
- Black color finish. Custom colors available by special order.

Arm

- Painted galvanized steel arm mount the luminaires to the light pole.
- Can be attached in any direction and any height on the pole.
- Black color finish. Custom colors by special order only.

Pole

- Painted galvanized steel pole with square base plate.
- Pole features a decorative spiraled design.
- Includes a welded mounting plate for securing onto the battery enclosure.
- Pole height is 15'. Total height is approx. 17' when mounted on enclosure.
- Wind load rating is 110 MPH with a 1.3 gust factor.
- Black color finish. Custom colors by special order only.
- The location, wind factor, and ground conditions will affect the size of the foundation required.



*SUBJECT TO OUR TERMS & CONDITIONS, AND RETURNS POLICY

Lowest Price* **Worldwide*** **10 Year*** **20 Year*** **Lifetime***
Guarantee Shipping System Warranty Panel Warranty Tech Support

9120 Centerlinks Commerce Drive • Unit 3 • Fort Myers • Florida • 33912 • USA • Telephone: 239-461-5522

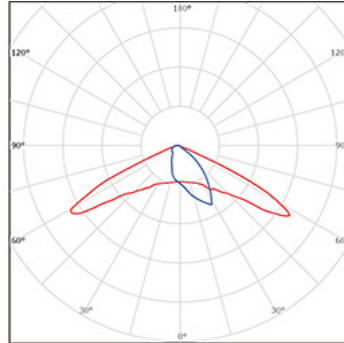
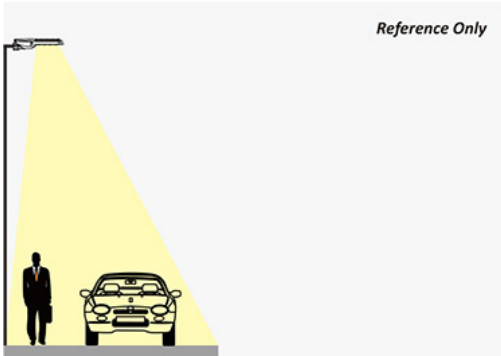
MONDAY - FRIDAY 8:00AM - 8:00PM (US EASTERN TIME)

www.solarilluminations.com • sales@solarilluminations.com



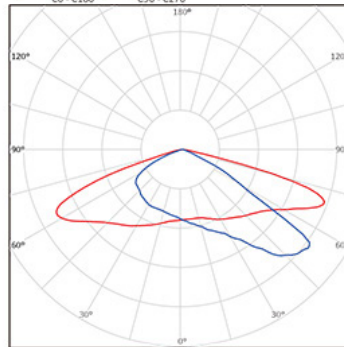
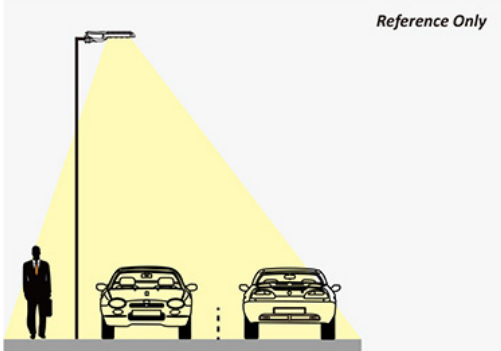
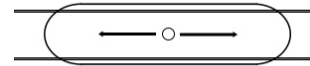
SL22

SOLAR STREET / PARKING LOT / AREA LIGHT
Dual 10W~30W LED Lamps. Complete System With Pole



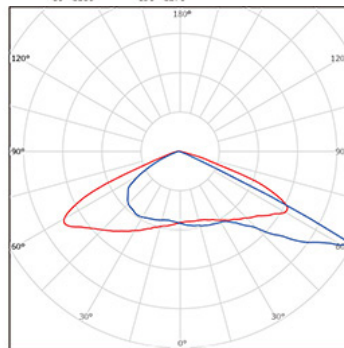
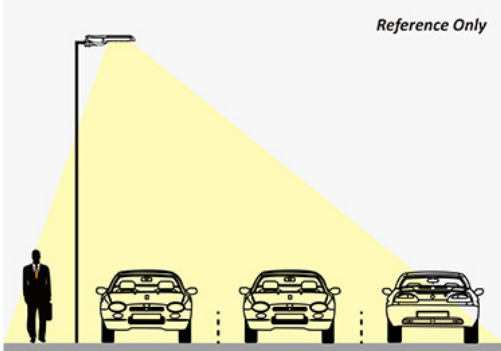
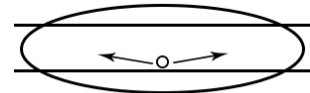
Type I

Applications:
Narrow Roadways
Pathways/sidewalks
Single-track / One-Lane Roads



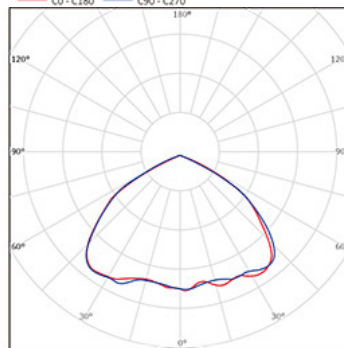
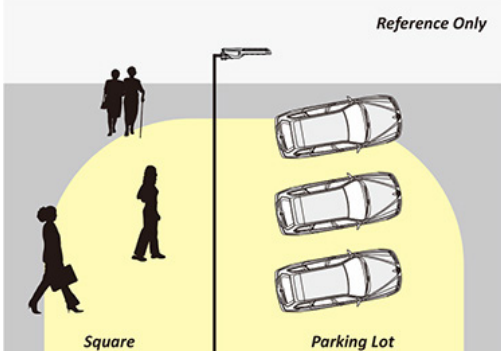
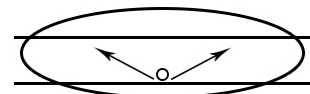
Type II

Applications:
Urban Roadways
Pathways/sidewalks
Two-lane Expressways



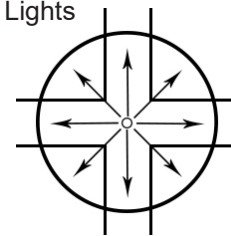
Type III

Applications:
Highways
Parking Lots
Multi-lane Expressways



Type V

Applications:
Parking Lots
Area Lights



Lowest Price* **Worldwide*** **10 Year*** **20 Year*** **Lifetime***

Guarantee Shipping System Warranty Panel Warranty Tech Support

9120 Centerlinks Commerce Drive • Unit 3 • Fort Myers • Florida • 33912 • USA • Telephone: 239-461-5522

MONDAY - FRIDAY 8:00AM - 8:00PM (US EASTERN TIME)

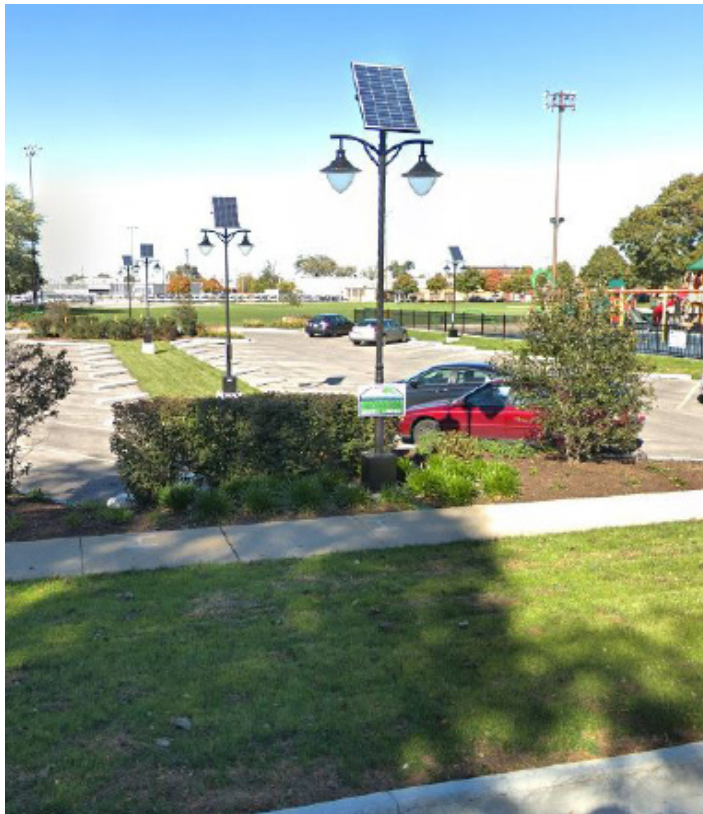
www.solarilluminations.com • sales@solarilluminations.com

*SUBJECT TO OUR TERMS & CONDITIONS, AND RETURNS POLICY



SL22

SOLAR STREET / PARKING LOT / AREA LIGHT
Dual 10W~30W LED Lamps. Complete System With Pole



*SUBJECT TO OUR TERMS & CONDITIONS, AND RETURNS POLICY

Lowest Price* **Worldwide*** **10 Year*** **20 Year*** **Lifetime***
Guarantee Shipping System Warranty Panel Warranty Tech Support

9120 Centerlinks Commerce Drive • Unit 3 • Fort Myers • Florida • 33912 • USA • Telephone: 239-461-5522

MONDAY - FRIDAY 8:00AM - 8:00PM (US EASTERN TIME)

www.solarilluminations.com • sales@solarilluminations.com