



# FL20

## Solar Shelter / Transit Light System

Three or More 5W, 10W, or 20W LED Lamps - Complete System



Sold as a complete, self-contained, stand-alone, solar powered lighting system which is ideal for remote locations or site where electricity is unavailable or too expensive to install. Perfect for illuminating different sizes and types of shelters, canopies, gazebos, covered walkways, bus stops, and other buildings and structures.



Samsung® LED Technology  
Up to 140 lm/W efficiency.

- Sold as a complete, easy to install system which includes all the necessary components.
- Choice of LED power. 5W, 10W, 15W, 20W, etc.
- System includes three, four, or more, weatherproof LED light fixtures each providing 690~2,640 lumens.
- Custom, expanded systems available with multiple light fixtures or other features.
- Dimming and motion sensor options available.
- The system can be pre-programmed to automatically operate from dusk to dawn all year round. Or it can operate on a single timed mode (on at dusk for X number of hours and then turn off) or on a dual timed mode (on at dusk for X number of hours, turn off, then turn back on again for X number of hours before dawn).
- The solar panel size (wattage) and the battery size (capacity) is carefully calculated and determined by the total LED power, the geographic location of the site, and the required nightly illumination time.



Lowest Price\*  
Guarantee



Worldwide\*  
Shipping



10 Year\*  
System Warranty



20 Year\*  
Panel Warranty



Lifetime\*  
Tech Support



9120 Centerlinks Commerce Drive • Unit 3 • Fort Myers • FL • 33912 • USA • Telephone: 239-461-5522

MONDAY - FRIDAY 8:00AM - 8:00PM (US EASTERN TIME)

[www.solarilluminations.com](http://www.solarilluminations.com) • [sales@solarilluminations.com](mailto:sales@solarilluminations.com)



# FL20

## Solar Shelter / Transit Light System

Three or More 5W, 10W, or 20W LED Lamps - Complete System

### Solar Makes Sense

Using a solar lighting system is often **cheaper than trenching** cables to remote sites or through parking lots, under roads and sidewalks.



**No monthly bills** for electric usage, meter fees, or taxes.

**Federal and local incentives** may be available to offset the cost of the system. View our website for current incentives.



**Renewable energy.** Use the sun's unlimited power as a clean source of renewable energy.

**Green Image.** Let people know your company or organization is doing its part in reducing its reliance on unclean energy.



### Purchase with Confidence



Established in 2002 with offices and warehouse located in Fort Myers, Florida where we store, assemble, ship, and support our products.



We stand behind our systems with a 20 year limited warranty on the solar panels, and a 10 year limited warranty on the system.



Our superior customer service and support is proven with our A+ rating with the Better Business Bureau.



Technical support is available for life! We'll be here to assist you with support and troubleshooting if the need arises.



**Lowest Price\*** Guarantee

**Worldwide\*** Shipping

**10 Year\*** System Warranty

**20 Year\*** Panel Warranty

**Lifetime\*** Tech Support

9120 Centerlinks Commerce Drive • Unit 3 • Fort Myers • FL • 33912 • USA • Telephone: 239-461-5522

MONDAY - FRIDAY 8:00AM - 8:00PM (US EASTERN TIME)

www.solarilluminations.com • sales@solarilluminations.com

\*SUBJECT TO OUR TERMS & CONDITIONS, AND RETURNS POLICY



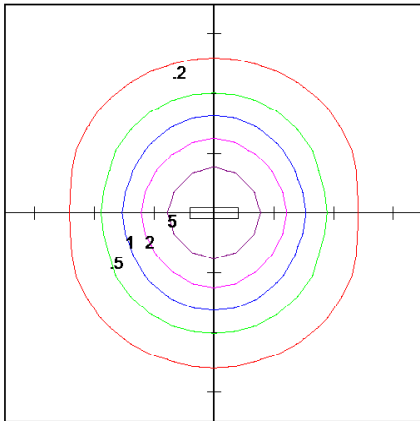
# FL20

## Solar Shelter / Transit Light System Three or More 5W, 10W, or 20W LED Lamps - Complete System

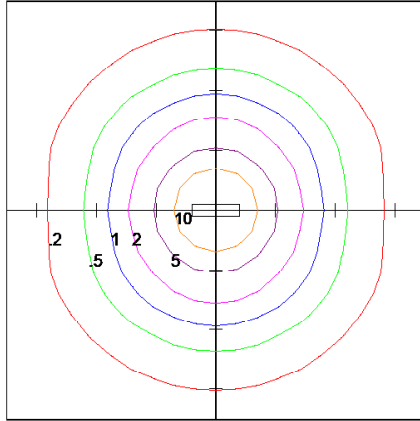
### Light Fixture



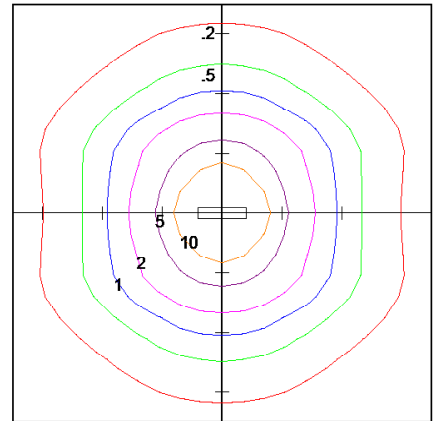
- A choice of three, four, or more light fixtures are supplied with this system.
- Can be configured as a 12V or 24V DC system.
- Vandal resistant polycarbonate construction with stainless steel hardware.
- Highly efficient LEDs providing at least 140lm/W.
- Light output is from 690 to 2,640 lumens per fixture.
- Offered with a choice of LED power 5, 10, 15, or 20 Watts, etc.
- LED color temperature (CCT) is typically daylight white (5,000k).
- Other LED color temperatures are available by special order (warm white 3,000k, cool white 6,000k, etc.).
- LED life is typically up to 100,000 hours or equal to about 22 years.
- These enclosures meet IEC Standards, and are IP65 weather rated.
- Choice of 24" long version or 48" long version.
- 2' light fixture dimensions are approx. 26" x 4" x 3.5" (66cm x 10cm x 9cm) LxWxD.
- 4' light fixture dimensions are approx. 52" x 4" x 3.5" (120cm x 10cm x 9cm) LxWxD.
- Each light fixture is supplied with approx. 20' (6M) of pre-wired cable. Additional cable can be ordered as an option.
- The light fixtures are designed to attached directly onto a solid vertical or horizontal surface.
- UL and ETL listed fixtures available upon request or by special order.



SOLAR ILLUMINATIONS  
2' 10W VAPOR LIGHT WITH CLEAR LENS.  
Horizontal Footcandles  
Scale: 1 Inch = 10 FT.  
Light Loss Factor = 1.00  
Lumens Per Lamp = 1360  
Total Lamp Lumens = 1360  
Mounting Height = 10.00 FT



SOLAR ILLUMINATIONS  
2' 20W VAPOR LIGHT WITH CLEAR LENS.  
Horizontal Footcandles  
Scale: 1 Inch = 10 FT.  
Light Loss Factor = 1.00  
Lumens Per Lamp = 2660  
Total Lamp Lumens = 2660  
Mounting Height = 10.00 FT



SOLAR ILLUMINATIONS  
4' 20W VAPOR LIGHT WITH CLEAR LENS.  
Horizontal Footcandles  
Scale: 1 Inch = 10 FT.  
Light Loss Factor = 1.00  
Lumens Per Lamp = 2660  
Total Lamp Lumens = 2660  
Mounting Height = 10.00 FT



Samsung® LED Technology  
Up to 140 lm/W efficiency.



IP65, Vaporproof, UL Listed  
& Vandal Resistant Enclosure



Lowest Price\*  
Guarantee



Worldwide\*  
Shipping



10 Year\*  
System Warranty



20 Year\*  
Panel Warranty



Lifetime\*  
Tech Support



9120 Centerlinks Commerce Drive • Unit 3 • Fort Myers • FL • 33912 • USA • Telephone: 239-461-5522

MONDAY - FRIDAY 8:00AM - 8:00PM (US EASTERN TIME)

www.solarilluminations.com • sales@solarilluminations.com

\*SUBJECT TO OUR TERMS & CONDITIONS, AND RETURNS POLICY



# FL20

## Solar Shelter / Transit Light System

Three or More 5W, 10W, or 20W LED Lamps - Complete System



### Solar Panel

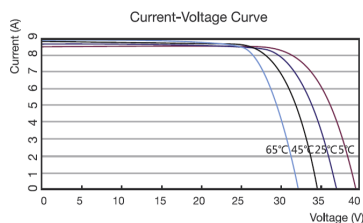
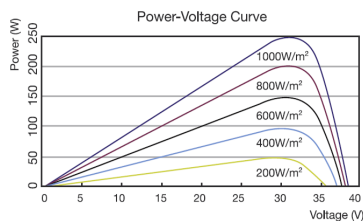
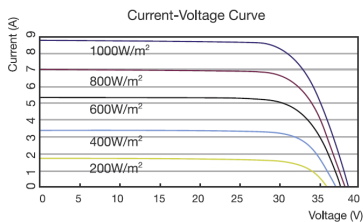
Systems are supplied with high quality monocrystalline or polycrystalline solar panels with the highest performance and efficiency. They are designed to endure the harshest environments, and are guaranteed to provide power for well over 20 years. Typically manufactured in the USA, Canada, or Germany. The solar panel power is subject to LED consumption, installation location, and illumination period. Please consult with our engineers for specific details and solar power recommendations.

### MC4 Connector



### Photovoltaic Module

- Highly efficient monocrystalline or polycrystalline solar panel with aluminum frame, anti-aging, and encapsulated membrane.
- Anti-reflective and anti-soiling surface that reduces power losses from dirt and dust.
- Certified to withstand high wind loads (340PSI) and snow loads (780PSI); and resistance to high salt and ammonia.
- Manufactured to international standards, verified and certified by independent testing laboratories. (UL, ETL, IEC, MCS, & TUV)
- Assembled to strict quality control standards; international standards ISO 9001 and ISO 14001.
- Range of solar panel power available from 70W to +1,500W.
- The solar panel power is subject to LED consumption, installation location, and illumination period. Please consult our engineers for specific solar power requirements.
- Solar panels can be supplied in a single or dual format.
- Typical solar panel life is over 30 years, subject to environmental factors.
- 90W panel dimensions: 32.35" x 26.22" x 1.5"
- 100W panel dimensions: 40.25" x 26.25" x 1.5"
- 120W panel dimensions: 47.87" x 26.43" x 1.5"
- 170W panel dimensions: 44" x 38.7" x 1.5" (or may be supplied as two 90W panels).
- 275W panel dimensions: 64.38" x 39" x 1.5"
- 340W panel consists of two 170W panels.



Lowest Price\*  
Guarantee

Worldwide\*  
Shipping

10 Year\*  
System Warranty

20 Year\*  
Panel Warranty

Lifetime\*  
Tech Support

9120 Centerlinks Commerce Drive • Unit 3 • Fort Myers • FL • 33912 • USA • Telephone: 239-461-5522

MONDAY - FRIDAY 8:00AM - 8:00PM (US EASTERN TIME)

www.solarilluminations.com • sales@solarilluminations.com

\*SUBJECT TO OUR TERMS & CONDITIONS, AND RETURNS POLICY

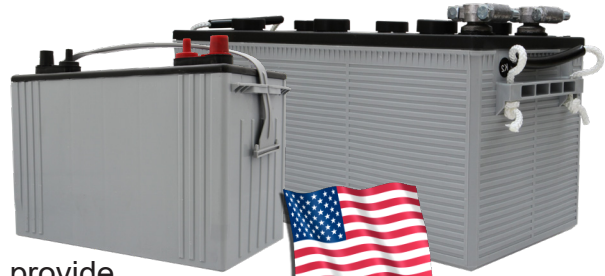


# FL20

## Solar Shelter / Transit Light System Three or More 5W, 10W, or 20W LED Lamps - Complete System



“EastPenn batteries are engineered and tested to provide reliable, long-lasting power for Photovoltaic (PV) and renewable energy applications where frequent deep cycles are required and minimum maintenance is desirable.”



Made in the USA



### Battery

- Manufactured by: East Penn Manufacturing Co. Inc.
- 100% made in the USA.
- System supplied standard with two 12 Volt batteries. Batteries are wired in series to make a 24 Volt system.
- Available battery capacities range from 32Ah to 245Ah (per battery).
- Choice of two battery types: Absorbed Glass Mat (AGM) or Gel Cell.
- Please consult our engineers for specific battery capacity requirements.
- Classified as Non-spillable (defined by DOT, ICAO and IATA), NonHAZMAT, and valve regulate.
- Conforms to ISO9001, ISO/TS 16949, and ISO14001 standards.
- Typical battery life is approximately 5 to 7 years, subject to environmental factors.

### VRLA Technology

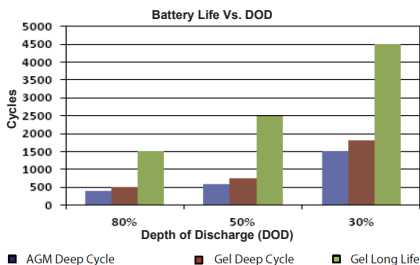
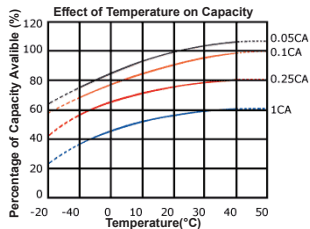
VRLA batteries are maintenance free for life. VRLA stands for Valve Regulated Lead Acid, which means the batteries are sealed. Gas will only escape through the safety valves in the case of overcharging or cell failure.

AGM and Gel batteries have exceptional discharge recovery, even after deep or prolonged discharge. However, it should be noted that repetitive deep discharge and prolonged deep discharge have a negative influence on the service life of all lead acid batteries.

Gel batteries in general have a longer service life and better cycle capacity than AGM batteries.

Please Note: The rated capacity of our AGM or gel deep cycle batteries refer to 20 hour discharge rate (i.e. 0.05CA). Most products actually operate near, or at a 100 hour discharge rate (i.e. 0.01CA) and thus actual available battery capacity is slightly higher than the advertised rate.

The total available battery power is measured in watt-hour (Wh) or V\*Ah. When comparing our total battery capacity with competitor's, please note that the battery capacity from a 12V system is not interchangeable with the battery capacity of a 24V system. However, the total battery power (i.e. watt-hours) is always comparable provided the correct system voltage is considered during calculation.



\*SUBJECT TO OUR TERMS & CONDITIONS, AND RETURNS POLICY

Lowest Price Guarantee Worldwide Shipping 10 Year System Warranty 20 Year Panel Warranty Lifetime Tech Support

9120 Centerlinks Commerce Drive • Unit 3 • Fort Myers • FL • 33912 • USA • Telephone: 239-461-5522

MONDAY - FRIDAY 8:00AM - 8:00PM (US EASTERN TIME)

www.solarilluminations.com • sales@solarilluminations.com





# FL20

## Solar Shelter / Transit Light System Three or More 5W, 10W, or 20W LED Lamps - Complete System

We stock several types of battery enclosures, ranging from various sizes and construction materials. The type of battery enclosure provided will depend on the size of the batteries required, and/or how the battery enclosure needs to be mounted. All battery enclosures are weather rated, designed for interior or exterior installation.

BE02



### BE02 Battery Enclosure

- Galvanized steel construction.
- Fitted with 4 outlets, and one solar panel input.
- Hinged lockable lid (padlock not included).
- Dimensions: 13" x 9 7/8" x 8 7/8" (330mm x 250mm x 225mm)
- Dimensions including lid over-hang: 9 7/8" x 15 6/8" x 8 7/8" (250mm x 400mm x 225mm)

BE03



### BE03 Battery Enclosure

- Galvanized steel construction.
- Fitted with 8 outlets, and one solar panel input.
- Hinged lockable lid (padlock not included).
- Dimensions: 18 1/8" x 14 3/8" x 11 3/16" (460mm x 365mm x 284mm)
- Dimensions including lid over-hang and side flanges: 21 1/4" x 15 3/8" x 11 3/16" (510mm x 390mm x 284mm)

BE05

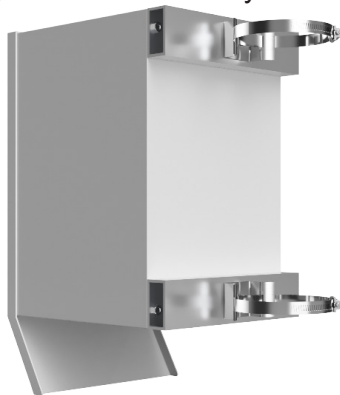


### BE05 Battery Enclosure

- Galvanized steel construction.
- Hinged lockable door (padlock not included).
- Cable entry hole on the back of the enclosure.
- Dimensions: 20 1/2" x 13 5/8" x 33" ( 521mm x 345mm x 838mm)

### Optional Battery Enclosure Mounting Hardware

If you need to mount your battery enclosure to a round post or pole, you can purchase our optional battery enclosure pole mount hardware kits.



### SP13

The SP13 battery enclosure pole mount kit can be used to mount our BE02 or BE03 to a round pole or post. Pole diameter options vary between 2" to 8" diameter.



\*SUBJECT TO OUR TERMS & CONDITIONS, AND RETURNS POLICY

Lowest Price\*  
Guarantee



Worldwide\*  
Shipping



10 Year\*  
System Warranty



20 Year\*  
Panel Warranty



Lifetime\*  
Tech Support



9120 Centerlinks Commerce Drive • Unit 3 • Fort Myers • FL • 33912 • USA • Telephone: 239-461-5522

MONDAY - FRIDAY 8:00AM - 8:00PM (US EASTERN TIME)

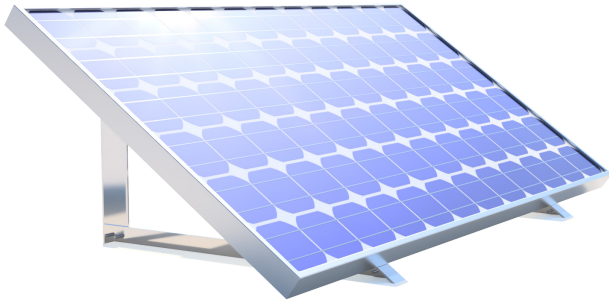
www.solarilluminations.com • sales@solarilluminations.com



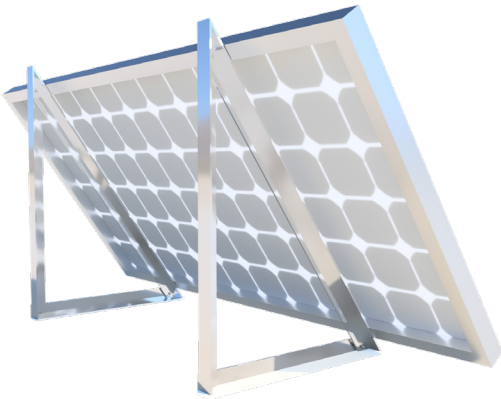
# FL20

## Solar Shelter / Transit Light System

Three or More 5W, 10W, or 20W LED Lamps - Complete System



Each solar panel is supplied with a pair of metal mounting triangles. These triangles allow the installer to mount the solar panel at an appropriate angle to a solid vertical or horizontal surface (such as a wall or concrete pad).



The panels can be installed in numerous ways, but note that the solar must be mounted at an appropriate angle (15° plus site latitude), face due south for the northern hemisphere and north for the southern hemisphere, and be in clear view of the sun (with no shading).

If any of these requirements are not possible, please notify us prior to ordering so we can calculate solar panel sizing options.

### Optional Solar Panel Mounting Hardware

Below are solar panel pole mount options that can be purchased as an optional extra.

#### SP11

Can accommodate panels up to 39" wide



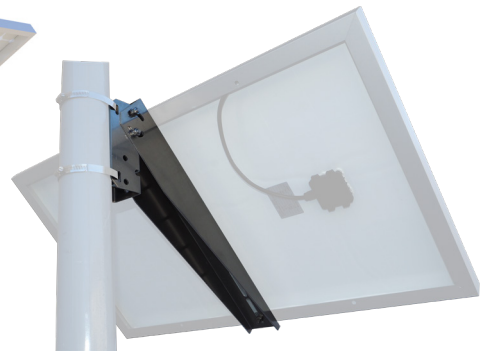
#### SP12

Can accommodate one or two panels, up to 39" wide each.



#### SP08

Can accommodate panels up to 26" wide.



**Lowest Price\***  
Guarantee ✓

**Worldwide\***  
Shipping ✓

**10 Year\***  
System Warranty ✓

**20 Year\***  
Panel Warranty ✓

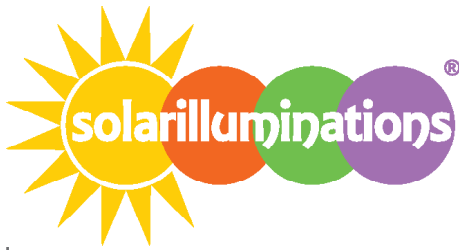
**Lifetime\***  
Tech Support ✓

9120 Centerlinks Commerce Drive • Unit 3 • Fort Myers • FL • 33912 • USA • Telephone: 239-461-5522

MONDAY - FRIDAY 8:00AM - 8:00PM (US EASTERN TIME)

www.solarilluminations.com • sales@solarilluminations.com

\*SUBJECT TO OUR TERMS & CONDITIONS, AND RETURNS POLICY



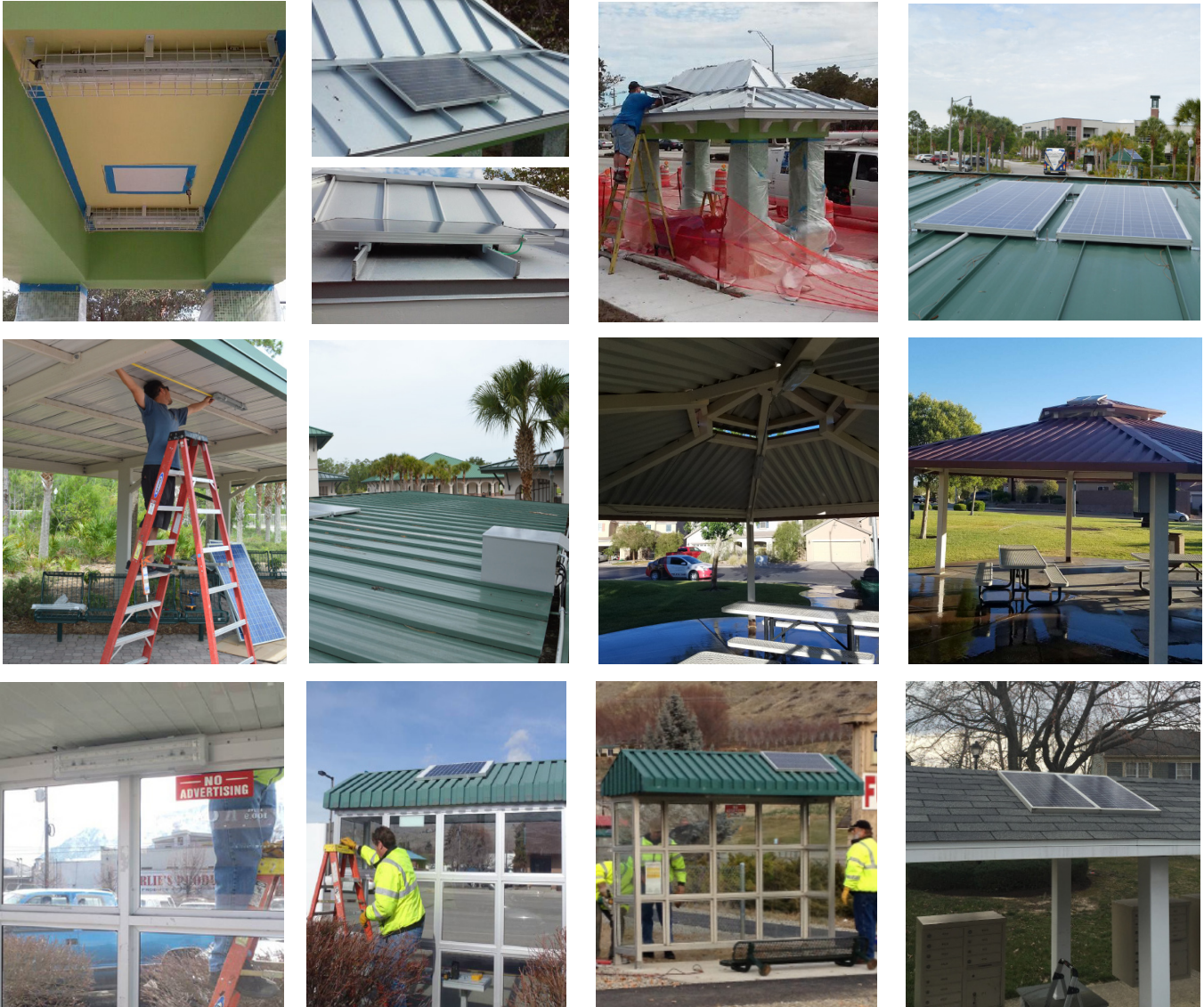
# FL20

## Solar Shelter / Transit Light System

Three or More 5W, 10W, or 20W LED Lamps - Complete System

### Installation

You do not necessarily need to be an expert in solar or electricity to successfully install one of our systems. Our products are designed to be simple and easy to install, supplied with quick connections and common mounting hardware.



The solar panel can mount directly to the roof or to a separate pole using our supplied triangular hardware or other available hardware. The light fixtures can directly screw or bolt onto a solid surface, secured using the supplied mounting clips for a quick snap fit connection, or they hang from the ceiling. The battery enclosure is designed to mount to a horizontal/vertical surface using bolts or can strap to a pole using heavy duty stainless steel banding. The MPPT charge controller will be pre-configured and programmed to meet your requirements.

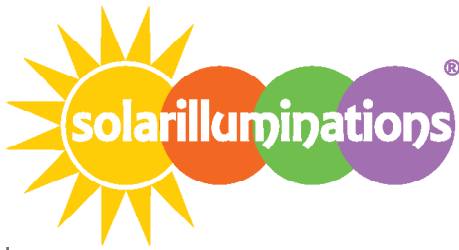
**Lowest Price\*** **Worldwide\*** **10 Year\*** **20 Year\*** **Lifetime\***   
 Guarantee Shipping System Warranty Panel Warranty Tech Support

9120 Centerlinks Commerce Drive • Unit 3 • Fort Myers • FL • 33912 • USA • Telephone: 239-461-5522

MONDAY - FRIDAY 8:00AM - 8:00PM (US EASTERN TIME)

[www.solarilluminations.com](http://www.solarilluminations.com) • [sales@solarilluminations.com](mailto:sales@solarilluminations.com)

\*SUBJECT TO OUR TERMS & CONDITIONS, AND RETURNS POLICY

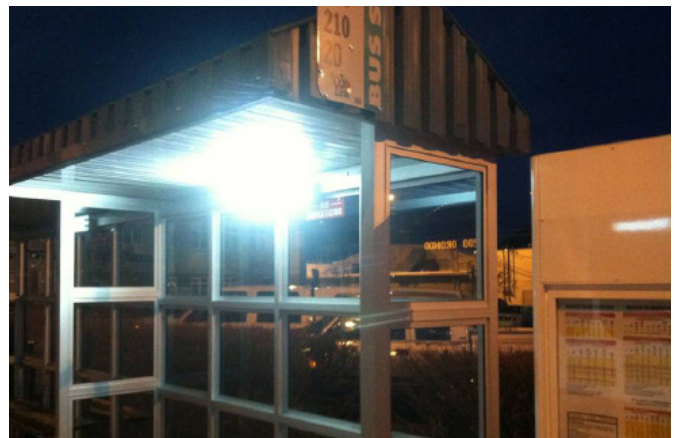


# FL20

## Solar Shelter / Transit Light System

Three or More 5W, 10W, or 20W LED Lamps - Complete System

### Installation



\*SUBJECT TO OUR TERMS & CONDITIONS, AND RETURNS POLICY

**Lowest Price\*** **Worldwide\*** **10 Year\*** **20 Year\*** **Lifetime\***   
Guarantee Shipping System Warranty Panel Warranty Tech Support

9120 Centerlinks Commerce Drive • Unit 3 • Fort Myers • FL • 33912 • USA • Telephone: 239-461-5522

MONDAY - FRIDAY 8:00AM - 8:00PM (US EASTERN TIME)

[www.solarilluminations.com](http://www.solarilluminations.com) • [sales@solarilluminations.com](mailto:sales@solarilluminations.com)